

# Product data sheet

Specifications



## pressure switch XMLB 350 mbar - adjustable scale 2 thresholds - 1 C/O

XMLBL35S2S11

! Discontinued on: 20 April 2022

! Discontinued

### Main

Range of product	Telemecanique Pressure sensors XM
Product or component type	Electromechanical pressure sensor
Pressure sensor type	Electromechanical pressure sensor
Device short name	XMLB
Pressure rating	0.35 bar
Controlled fluid	Corrosive fluid (0...160 °C) Fresh water (0...160 °C)
Fluid connection type	G 1/4 (female) conforming to ISO 228
Electrical connection	Screw-clamps terminals, 1 x 0.5...2 x 2.5 mm <sup>2</sup> 1 connector Pg 13
AWG gauge	AWG 20...AWG 14
Cable entry	Cable gland 9...13 mm
Contacts type and composition	1 C/O
Product specific application	-
Pressure switch type of operation	Regulation between 2 thresholds
Electrical circuit type	Control circuit
Scale type	Adjustable differential
Local display	With
Adjustable range of switching point on rising pressure	0.045...0.35 bar
Adjustable range of switching point on falling pressure	0.003...0.3 bar
Possible differential maximum at high setting	0.3 bar
Maximum permissible accidental pressure	2.25 bar
Destruction pressure	4.5 bar
Pressure actuator	Diaphragm
Materials in contact with fluid	316L stainless steel PTFE
Enclosure material	Zinc alloy

<b>[In] rated current</b>	3 A, B300, AC-15 (Ue = 120 V) conforming to EN/IEC 60947-5-1 1.5 A, B300, AC-15 (Ue = 240 V) conforming to EN/IEC 60947-5-1 0.1 A, R300, DC-13 (Ue = 250 V) conforming to EN/IEC 60947-5-1
---------------------------	--

## Complementary

<b>Possible differential minimum at low setting</b>	0.042 bar (- 8 mbar, + 3 mbar)
---	--------------------------------

<b>Possible differential minimum at high setting</b>	0.05 bar (+/- 8 mbar)
--	-----------------------

<b>Maximum permissible pressure - per cycle</b>	1.25 bar
---	----------

<b>Terminal block type</b>	4 terminals
----------------------------	-------------

<b>Maximum operating rate</b>	120 cyc/mn
-------------------------------	------------

<b>Repeat accuracy</b>	2 %
------------------------	-----

<b>[Ui] rated insulation voltage</b>	300 V conforming to UL 508 500 V conforming to EN/IEC 60947-1 300 V conforming to CSA C22.2 No 14
--------------------------------------	---

<b>[Uimp] rated impulse withstand voltage</b>	6 kV conforming to EN/IEC 60947-1
---	-----------------------------------

<b>Auxiliary contacts operation</b>	Snap action
-------------------------------------	-------------

<b>Contacts material</b>	Silver contacts
--------------------------	-----------------

<b>Maximum resistance across terminals</b>	25 mOhm conforming to IEC 255-7 category 3 25 mOhm conforming to NF C 93-050 method A
--	--

<b>Short-circuit protection</b>	10 A cartridge fuse, type gG (gl)
---------------------------------	-----------------------------------

<b>Mechanical durability</b>	4000000 cycles
------------------------------	----------------

<b>Setting</b>	External
----------------	----------

<b>Height</b>	162 mm
---------------	--------

<b>Depth</b>	110 mm
--------------	--------

<b>Width</b>	110 mm
--------------	--------

<b>Net weight</b>	2.575 kg
-------------------	----------

## Environment

<b>Standards</b>	CE CSA C22.2 No 14 EN/IEC 60947-5-1 UL 508
------------------	---

<b>Product certifications</b>	EAC UL LROS (Lloyds register of shipping) CSA BV CCC
-------------------------------	---

<b>Protective treatment</b>	TC standard version
-----------------------------	---------------------

<b>Ambient air temperature for operation</b>	-25...70 °C
--	-------------

<b>Ambient air temperature for storage</b>	-40...70 °C
--	-------------

<b>Operating position</b>	Any position
---------------------------	--------------

<b>Vibration resistance</b>	2 gn conforming to IEC 60068-2-6 (f = 30...500 Hz)
-----------------------------	--

<b>Shock resistance</b>	30 gn conforming to IEC 60068-2-27
-------------------------	------------------------------------

<b>Electrical shock protection class</b>	Class I conforming to IEC 1140 Class I conforming to IEC 536 Class I conforming to NF C 20-030
--	--

<b>IP degree of protection</b>	IP66 conforming to EN/IEC 60529
--------------------------------	---------------------------------

## Packing Units

Unit Type of Package 1	PCE
Number of Units in Package 1	1
Package 1 Weight	2.44 kg
Package 1 Height	15.0 cm
Package 1 width	16.5 cm
Package 1 Length	15.5 cm
Unit Type of Package 2	S04
Number of Units in Package 2	4
Package 2 Weight	11.012 kg
Package 2 Height	30.0 cm
Package 2 width	40.0 cm
Package 2 Length	60.0 cm

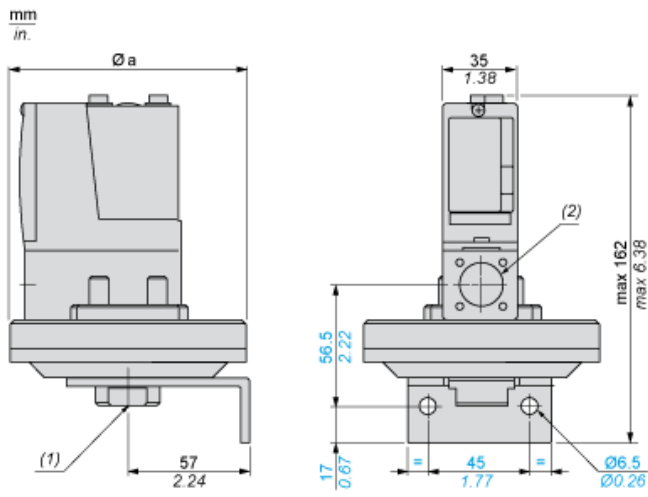
## Offer Sustainability

Sustainable offer status	Green Premium product
REACH Regulation	<a href="#">REACH Declaration</a>
EU RoHS Directive	Pro-active compliance (Product out of EU RoHS legal scope) <a href="#">EU RoHS Declaration</a>
Mercury free	Yes
RoHS exemption information	<a href="#">Yes</a>
Environmental Disclosure	<a href="#">Product Environmental Profile</a>
California proposition 65	WARNING: This product can expose you to chemicals including: Diisononyl phthalate (DINP), which is known to the State of California to cause cancer, and Di-isodecyl phthalate (DIDP), which is known to the State of California to cause birth defects or other reproductive harm. For more information go to <a href="http://www.P65Warnings.ca.gov">www.P65Warnings.ca.gov</a>

## Contractual warranty

Warranty	18 months
----------	-----------

Dimensions

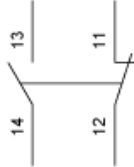


- Ø a = 110 mm / 4.33 in.  
(1) 1 fluid entry, tapped G1/4 (BSP female)  
(2) 1 electrical connections entry, tapped Pg 13.5

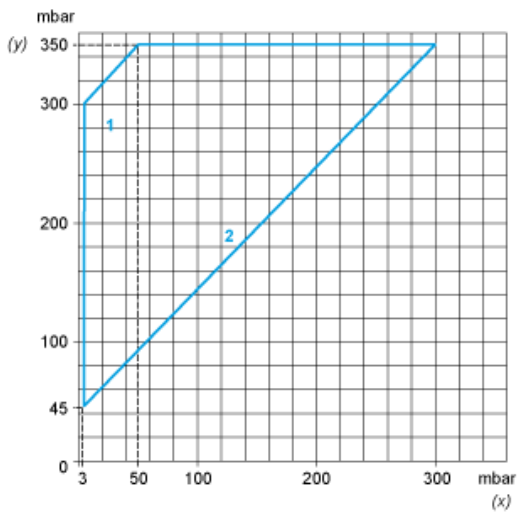
**Wiring Diagram**

---

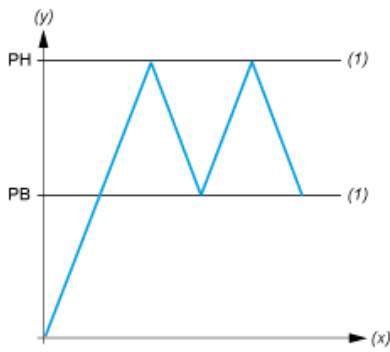
**Terminal Model**



**Operating Curves**



- (y) Rising pressure
- (x) Falling pressure
- 1 : Maximum differential
- 2 : Minimum differential



- (y) Pressure
- (x) Time
- (1) Adjustable value
- PH : High point
- PB : Below point

**Recommended replacement(s)**

XMLBL35S2S11 is replaced by the following product range:



**pressure sensors XM**  
Sensors for pressure control  
Products: 729