



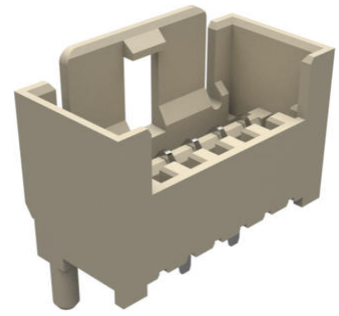
**Part Number :** [930700001](#)

**Product Description :** Appli-Mate RAST 2.5 Header, Vertical, 3 Circuits, Tin (Sn) Plating, Glow-Wire Capable, Positioning Keys None

**Series Number :** 93070

**Status :** Active

**Product Category :** PCB Headers and Receptacles



---

## Documents & Resources

### Drawings

[930700001\\_sd.pdf](#)

### 3D Models and Design Files

[STEP AP242](#)

[SOLIDWORKS](#)

[Creo](#)

[Symbol and Footprint \(Multi-Format\)](#)

### Specifications

[PK-93070-001-001.pdf](#)

[PS-93070-001-001.pdf](#)

[PS-99020-0040-001.pdf](#)

---

## Product Environment Compliance

### Compliance

GADSL/IMDS	Not Relevant
China RoHS	per SJ/T 11365-2006 
EU ELV	Not Relevant
Low-Halogen Status	Not Low-Halogen per IEC 61249-2-21
REACH SVHC	Not Contained per D(2025)4165-DC (25 June 2025)
EU RoHS	Compliant per EU 2015/863

## Compliance Statements

- EU RoHS
- REACH SVHC
- Low-Halogen

## Industry Documents

- IPC 1752A Class C
- IPC 1752A Class D
- Molex Product Compliance Declaration
- IEC-62474
- chemSHERPA (xml)

## Substances of Interest

- PFAS

## EU RoHS Certificate of Compliance

## Additional Product Compliance Information

---

## Part Details

### General

Status	Active
Category	PCB Headers and Receptacles
Series	93070
Description	Appli-Mate RAST 2.5 Header, Vertical, 3 Circuits, Tin (Sn) Plating, Glow-Wire Capable, Positioning Keys None
Application	Power, Wire-to-Board
Comments	This Molex product is manufactured from material that has the following ratings, tested by independent agencies: a) A Glow Wire Ignition Temperature (GWIT) of at least 775 deg C per IEC 60695-2-13. b) A Glow Wire Flammability Index (GWFI) above 850 deg C per IEC 60695-2-12 and hence complies with the requirements set out in the International Standard IEC 60335-1 5th edition - household and similar electrical appliances - safety, section 30 Resistance to heat and fire. The customers using this

	product must determine its suitability for use in their particular application through testing or other acceptable means as described in end-product glow-wire flammability test standard IEC 60695-2-11 and any applicable product end-use standard(s). If it is determined during the customer's evaluation of suitability, that higher performance is required, please contact Molex for possible product options.
Component Type	PCB Header
Product Name	RAST 2.5
UPC	883906171858

### Agency

CSA	LR19980
UL	E29179

### Electrical

Current - Maximum per Contact	6.0A
Voltage - Maximum	32V

### Physical

Breakaway	No
Circuits (Loaded)	3
Circuits (maximum)	3
Color - Resin	Natural
Durability (mating cycles max)	10
First Mate / Last Break	No
Flammability	94V-0
Glow-Wire Capable	Yes
Guide to Mating Part	No
Keying to Mating Part	None
Lock to Mating Part	Yes
Material - Metal	Brass
Material - Plating Mating	Tin

Material - Plating Termination	Nickel
Material - Resin	Nylon
Net Weight	1.030/g
Number of Rows	1
Orientation	Vertical
Packaging Type	Carton
PCB Locator	Yes
PCB Retention	None
PCB Thickness - Recommended	1.50mm
PC Tail Length	3.30mm
Pitch - Mating Interface	2.50mm
Pitch - Termination Interface	2.50mm
Plating min - Mating	3.048µm
Plating min - Termination	3.048µm
Polarized to Mating Part	Yes
Polarized to PCB	Yes
Shrouded	Fully
Stackable	No
Temperature Range - Operating	-20° to +120°C
Termination Interface Style	Through Hole

---

## Mates With / Use With

### Mates with Part(s)

Description	Part Number
2.50mm Pitch Appli-Mate RAST 2.5 IDT Housings	<u>91716</u>
2.50mm Pitch Appli-Mate RAST 2.5 Female Connectors	<u>93050</u>

### Use with Part(s)

Description	Part Number
Use With	RAST Standard Interface

---

## Application Tooling

## Global

Description	Part Number
RAST 2.5 and R-Power Semi-Automatic IDC Machine	<u>2166580100</u>

---

This document was generated on Sep 24, 2025