

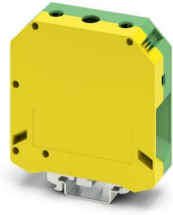
TB 95-PE I - Protective conductor terminal block



3251208

<https://www.phoenixcontact.com/gb/products/3251208>

Please be informed that the data shown in this PDF document is generated from our online catalog. Please find the complete data in the user documentation. Our general terms of use for downloads are valid.



Protective conductor terminal block, number of connections: 2, number of positions: 1, connection method: Screw connection, Rated cross section: 95 mm², cross section: 25 mm² - 95 mm², mounting type: NS 35/7,5, NS 35/15, NS 32, color: green-yellow

Your advantages

- Reliable cable connection is ensured by three-point centering of the conductor in the prismatic sleeve base
- Low contact resistance of the contact surface due to ribbing
- Screw locking by means of spring-loaded elements in the clamping part

Commercial data

| | |
|--------------------------------------|---------------|
| Item number | 3251208 |
| Packing unit | 10 pc |
| Minimum order quantity | 10 pc |
| Sales key | BE1421 |
| Product key | BEK321 |
| GTIN | 4046356951142 |
| Weight per piece (including packing) | 330.6 g |
| Weight per piece (excluding packing) | 330.6 g |
| Customs tariff number | 85369010 |
| Country of origin | PL |

TB 95-PE I - Protective conductor terminal block



3251208

<https://www.phoenixcontact.com/gb/products/3251208>

Technical data

Product properties

| | |
|-----------------------|-----------------------|
| Product type | Ground terminal block |
| Product family | TB |
| Number of positions | 1 |
| Number of connections | 2 |
| Number of rows | 1 |

Insulation characteristics

| | |
|----------------------|-----|
| Overvoltage category | III |
| Degree of pollution | 3 |

Electrical properties

| | |
|---|--------|
| Rated surge voltage | 8 kV |
| Maximum power dissipation for nominal condition | 7.54 W |

Connection data

| | |
|---|---|
| Number of connections per level | 2 |
| Nominal cross section | 95 mm ² |
| Rated cross section AWG | 4/0 |
| Connection method | Screw connection |
| Screw thread | M8 |
| Note | Screws with hexagonal socket |
| Tightening torque | 15 ... 20 Nm |
| Stripping length | 33 mm |
| Connection in acc. with standard | IEC 60947-7-2 |
| Conductor cross-section rigid | 25 mm ² ... 95 mm ² |
| Cross section AWG | 2 ... 3/0 (converted acc. to IEC) |
| Conductor cross-section flexible | 35 mm ² ... 95 mm ² |
| Conductor cross-section, flexible [AWG] | 1/0 ... 3/0 (converted acc. to IEC) |
| Conductor cross-section flexible (ferrule without plastic sleeve) | 35 mm ² ... 95 mm ² |
| Flexible conductor cross-section (ferrule with plastic sleeve) | 35 mm ² ... 95 mm ² |
| Cross-section with insertion bridge, rigid | 95 mm ² |
| Cross-section with insertion bridge, flexible | 70 mm ² |
| Nominal cross section | 95 mm ² |

Dimensions

| | |
|-------------------|---------|
| Width | 25 mm |
| Height | 83 mm |
| Depth on NS 32 | 95 mm |
| Depth on NS 35/15 | 97.5 mm |

Material specifications

TB 95-PE I - Protective conductor terminal block



3251208

<https://www.phoenixcontact.com/gb/products/3251208>

| | |
|--|--------------|
| Color | green-yellow |
| Flammability rating according to UL 94 | V2 |
| Insulating material group | I |
| Insulating material | PA |
| Static insulating material application in cold | -40 °C |
| Relative insulation material temperature index (Elec., UL 746 B) | 125 °C |

Mechanical properties

Mechanical data

| | |
|-----------------|----|
| Open side panel | No |
|-----------------|----|

Environmental and real-life conditions

Ambient conditions

| | |
|--|--|
| Ambient temperature (operation) | -60 °C ... 110 °C (Operating temperature range incl. self-heating; for max. short-term operating temperature, see RTI Elec.) |
| Ambient temperature (storage/transport) | -25 °C ... 60 °C (for a short time, not exceeding 24 h, -60 °C to +70 °C) |
| Ambient temperature (assembly) | -5 °C ... 70 °C |
| Ambient temperature (actuation) | -5 °C ... 70 °C |
| Permissible humidity (operation) | 20 % ... 90 % |
| Permissible humidity (storage/transport) | 30 % ... 70 % |

Standards and regulations

| | |
|----------------------------------|---------------|
| Connection in acc. with standard | IEC 60947-7-2 |
|----------------------------------|---------------|

Mounting

| | |
|---------------|-----------|
| Mounting type | NS 35/7,5 |
| | NS 35/15 |
| | NS 32 |

TB 95-PE I - Protective conductor terminal block



3251208

<https://www.phoenixcontact.com/gb/products/3251208>

Drawings

Circuit diagram



TB 95-PE I - Protective conductor terminal block



3251208

<https://www.phoenixcontact.com/gb/products/3251208>

Approvals

To download certificates, visit the product detail page: <https://www.phoenixcontact.com/gb/products/3251208>



EAC

Approval ID: KZ7500651131219505

TB 95-PE I - Protective conductor terminal block



3251208

<https://www.phoenixcontact.com/gb/products/3251208>

Classifications

ECLASS

| | |
|-------------|----------|
| ECLASS-13.0 | 27250103 |
| ECLASS-15.0 | 27250103 |

ETIM

| | |
|----------|----------|
| ETIM 9.0 | EC000901 |
|----------|----------|

UNSPSC

| | |
|-------------|----------|
| UNSPSC 21.0 | 39121400 |
|-------------|----------|

TB 95-PE I - Protective conductor terminal block



3251208

<https://www.phoenixcontact.com/gb/products/3251208>

Environmental product compliance

EU RoHS

| | |
|---|--------------------|
| Fulfills EU RoHS substance requirements | Yes, No exemptions |
|---|--------------------|

China RoHS

| | |
|--|--|
| Environment friendly use period (EFUP) | EFUP-E |
| | No hazardous substances above the limits |

EU REACH SVHC

| | |
|-------------------------------------|----------------------------|
| REACH candidate substance (CAS No.) | No substance above 0.1 wt% |
|-------------------------------------|----------------------------|

Phoenix Contact 2025 © - all rights reserved
<https://www.phoenixcontact.com>

PHOENIX CONTACT Ltd
Halesfield 13, Telford
Shropshire, TF7 4PG
01952 681700
info@phoenixcontact.co.uk