



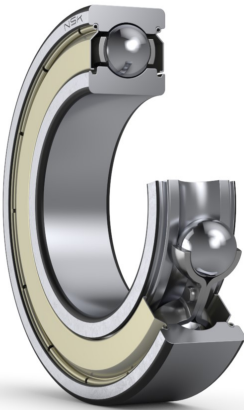
# PRODUCT DATASHEET

Datasheet creation date: 2025/07/08 2:23 (UTC)



## 6304ZZ

### Single-Row Deep Groove Ball Bearings



#### Boundary Dimensions

d	20	mm	Bore diameter
D	52	mm	Outside diameter
B	15	mm	Width
r (min.)	1.1	mm	Chamfer dimension

#### Basic Load Ratings

Cr	17500	N	Basic dynamic load rating
C0r	7900	N	Basic static load rating

#### Speeds

Grease	16000	min-1	Grease lubrication
--------	-------	-------	--------------------

#### Abutment and Fillet Dimensions

da (min.)	26.5	mm	Diameter of shaft abutment
da (max.)	28	mm	Diameter of shaft abutment
Da (max.)	45.5	mm	Diameter of housing abutment
ra (max.)	1	mm	Radius of shaft or housing fillet

#### Calculation factors

fo	12.4		Factor
----	------	--	--------

#### Additional information

z	7		Number of Balls
Dw	9.525	mm	Ball Diameter

#### Mass

Mass approx.	0.145	kg	Mass approx.
--------------	-------	----	--------------

