



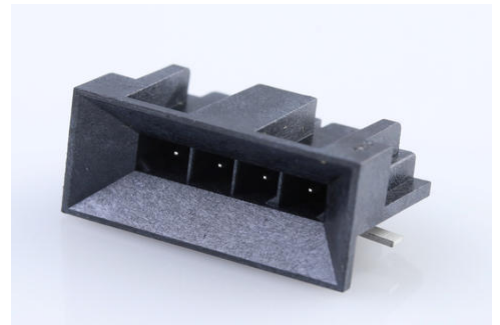
Part Number : [466220401](#)

Product Description : Micro-Fit BMI Header, Surface Mount, Single Row, Right-Angle, with Solder Tab, 0.38µm Gold (Au) Selective Plating, 4 Circuits, Tape and Reel

Series Number : 46622

Status : Active

Product Category : PCB Headers and Receptacles



Documents & Resources

Drawings

[466220401_sd.pdf](#)

[PK-46622-001-001.pdf](#)

3D Models and Design Files

[STEP AP242](#)

[SOLIDWORKS](#)

[Creo](#)

[Symbol and Footprint \(Multi-Format\)](#)


[SYM-46622-0400-001.zip](#)

Specifications

[PS-44300-001-001.pdf](#)

Product Environment Compliance

Compliance

| | |
|--------------------|--|
| GADSL/IMDS | Not Relevant |
| China RoHS |  per SJ/T 11365-2006 |
| EU ELV | Not Relevant |
| Low-Halogen Status | Low-Halogen per IEC 61249-2-21 |
| REACH SVHC | Not Contained per D(2025)4165-DC (25 June 2025) |
| EU RoHS | Compliant per EU 2015/863 |

Compliance Statements

- EU RoHS
- REACH SVHC
- Low-Halogen

Industry Documents

- IPC 1752A Class C
- IPC 1752A Class D
- Molex Product Compliance Declaration
- IEC-62474
- chemSHERPA (xml)

Substances of Interest

- PFAS

EU RoHS Certificate of Compliance

Additional Product Compliance Information

Part Details

General

| | |
|----------------|--|
| Status | Active |
| Category | PCB Headers and Receptacles |
| Series | 46622 |
| Description | Micro-Fit BMI Header, Surface Mount, Single Row, Right-Angle, with Solder Tab, 0.38µm Gold (Au) Selective Plating, 4 Circuits, Tape and Reel |
| Application | Power, Wire-to-Board |
| Component Type | PCB Header |
| Product Name | Micro-Fit BMI |
| UPC | 191128233064 |

Agency

| | |
|-----|---------|
| CSA | LR19980 |
|-----|---------|

Electrical

| | |
|-------------------------------|------|
| Current - Maximum per Contact | 8.5A |
| Voltage - Maximum | 600V |

Physical

| | |
|--------------------------------|------------------------|
| Breakaway | No |
| Circuits (Loaded) | 4 |
| Circuits (maximum) | 4 |
| Color - Resin | Black |
| Durability (mating cycles max) | 30 |
| First Mate / Last Break | No |
| Flammability | 94V-0 |
| Glow-Wire Capable | No |
| Guide to Mating Part | No |
| Keying to Mating Part | None |
| Lock to Mating Part | Yes |
| Material - Metal | Brass |
| Material - Plating Mating | Gold |
| Material - Plating Termination | Tin |
| Material - Resin | Liquid Crystal Polymer |
| Net Weight | 1.294/g |
| Number of Rows | 1 |
| Orientation | Right Angle |
| Packaging Type | Embossed Tape on Reel |
| PCB Locator | Yes |
| PCB Retention | Yes |
| Pitch - Mating Interface | 3.00mm |
| Plating min - Mating | 0.381µm |
| Plating min - Termination | 2.540µm |
| Polarized to Mating Part | Yes |
| Polarized to PCB | Yes |
| Shrouded | Fully |
| Stackable | No |
| Temperature Range - Operating | -40° to +105°C |
| Termination Interface Style | Surface Mount |

Solder Process Data

| | |
|------------------------------|--------|
| Max-Duration | 30 |
| Lead-Free Process Capability | REFLOW |
| Max-Cycle | 3 |

| | |
|----------|-----|
| Max-Temp | 260 |
|----------|-----|

Mates With / Use With

Mates with Part(s)

| Description | Part Number |
|--|--------------|
| Micro-Fit BMI Single Row Receptacle Housings | <u>46623</u> |