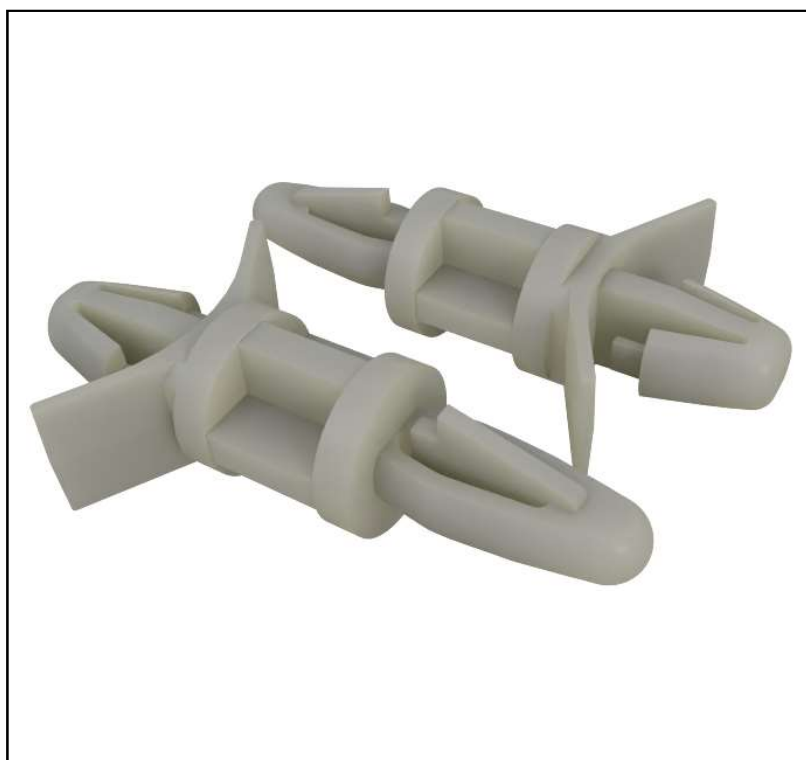


## Features

- Releasable locking mechanism
- Winged base gives extra stability
- Installed by hand

## RS PRO PCB Spacers

RS Stock No.: See table



RS PRO is the own brand of RS. The RS PRO Seal of Approval is your assurance of professional quality, a guarantee that every part is rigorously tested, inspected, and audited against demanding standards. Making RS PRO the Smart Choice for our customers.

## Product Description

- *Releasable locking mechanism secure holds PCB in place*
- *Ideal for mounting panels from 0.79mm to 1.98mm*
- *Simple snap-lock design means no installation tooling required*

## Material Specifications

|                           |                 |
|---------------------------|-----------------|
| Material Type             | Nylon 6,6       |
| Type                      | Snap-In Spacers |
| Colour                    | Natural         |
| Flammability Rating       | UL94-V2         |
| Working Temperature Range | -40°C to +85°C  |

## Part Specifications

| Parameters        | 0304306   | 0304307   | 0304308   | 0304310   | 0304312   | 0304313   | 0304314   | 0304316   |
|-------------------|-----------|-----------|-----------|-----------|-----------|-----------|-----------|-----------|
| Body Height (A)   | 4.8mm     | 6.0mm     | 6.4mm     | 7.9mm     | 8.0mm     | 9.5mm     | 10.0mm    | 11.1mm    |
| PCB Hole Diameter | 4.0mm     | 4.0mm     | 4.0mm     | 4.0mm     | 4.0mm     | 4.0mm     | 4.0mm     | 4.0mm     |
| PCB Thickness     | 1.57mm    | 1.57mm    | 1.57mm    | 1.57mm    | 1.57mm    | 1.57mm    | 1.57mm    | 1.57mm    |
| Panel Hole Dia.   | 4.75mm    | 4.75mm    | 4.75mm    | 4.75mm    | 4.75mm    | 4.75mm    | 4.75mm    | 4.75mm    |
| Panel Thickness   | 0.79-1.98 | 0.79-1.98 | 0.79-1.98 | 0.79-1.98 | 0.79-1.98 | 0.79-1.98 | 0.79-1.98 | 0.79-1.98 |

| Parameters        | 0304317   | 0304319   | 0304320   | 0303743   | 0303745   | 0303746   | 0303748   | 0303749   |
|-------------------|-----------|-----------|-----------|-----------|-----------|-----------|-----------|-----------|
| Body Height (A)   | 12.0mm    | 12.7mm    | 14.0mm    | 15.9mm    | 16.0mm    | 19.1mm    | 22.2mm    | 25.4mm    |
| PCB Hole Diameter | 4.0mm     | 4.0mm     | 4.0mm     | 4.0mm     | 4.0mm     | 4.0mm     | 4.0mm     | 4.0mm     |
| PCB Thickness     | 1.57mm    | 1.57mm    | 1.57mm    | 1.57mm    | 1.57mm    | 1.57mm    | 1.57mm    | 1.57mm    |
| Panel Hole Dia.   | 4.75mm    | 4.75mm    | 4.75mm    | 4.75mm    | 4.75mm    | 4.75mm    | 4.75mm    | 4.75mm    |
| Panel Thickness   | 0.79-1.98 | 0.79-1.98 | 0.79-1.98 | 0.79-1.98 | 0.79-1.98 | 0.79-1.98 | 0.79-1.98 | 0.79-1.98 |

