



XD4

Improved Reliability, Durability, Performance

USB 2.0 Portable External Hard-Drive



Sensational Stylish Design and Color
Store and Backup all your important files
photos, music, videos, and documents
and access them at the fastest speed available anytime

Black Pearl + White Pearl + Red Wine

Color feast



Access all your data
anytime, anywhere

XD4

• **Product feature**



Fanless, Noiseless, Heatless

The fan-less cooling system mounted on the aluminum inner body noiselessly eliminates heat through the structured vents

01

02

RED LED Light

Red LED light inside the heat vents to indicate HDD is operating



Enhanced CD line surface

Sophisticated CD line pattern designed to prevent from minor damage to surface

03

04



04

One touch switch to easily back up all data
One touch backup button(OTB) is applied to easily backup all data



Cradle included

To efficiently use narrow space the HDD can be mounted vertically with provided cradle.

05

06

Eco-Friendly product

Through implementation of strict LGE quality control standards XD4 attained Certified ROHS mark.



Stylish and sophisticated design

Slim and compact 3.5" size, sophisticated CD line pattern coming in three attractive colors (Black Pearl, Red Wine, White Pearl)



White Pearl

Red Wine

Black Pearl



Cradle to provide stability

Black Pearl + White Pearl + Red Wine

XD4



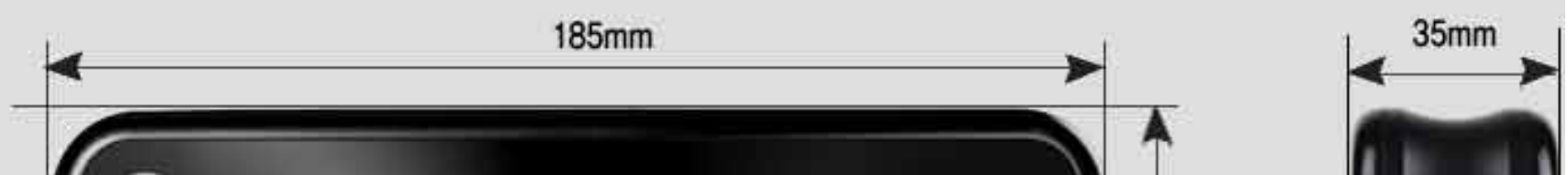
Modern design to station next to your digital TV

XD4's sophisticated design not only goes well naturally with the digital TV but also the desktop or laptop.

Product Design

Simple design and Compact size

Simple yet stylish fan-less design with quiet and reliable operation





※ The size of the image is different from actual product



CD LINE Design

CD line design not only provides an intricate design but also guarantees durability



Aluminum heatsink

The durable surface made of aluminum material cools the heat

Powerful backup and recovery solution

Provides a powerful backup solution to backup your data easily and conveniently.

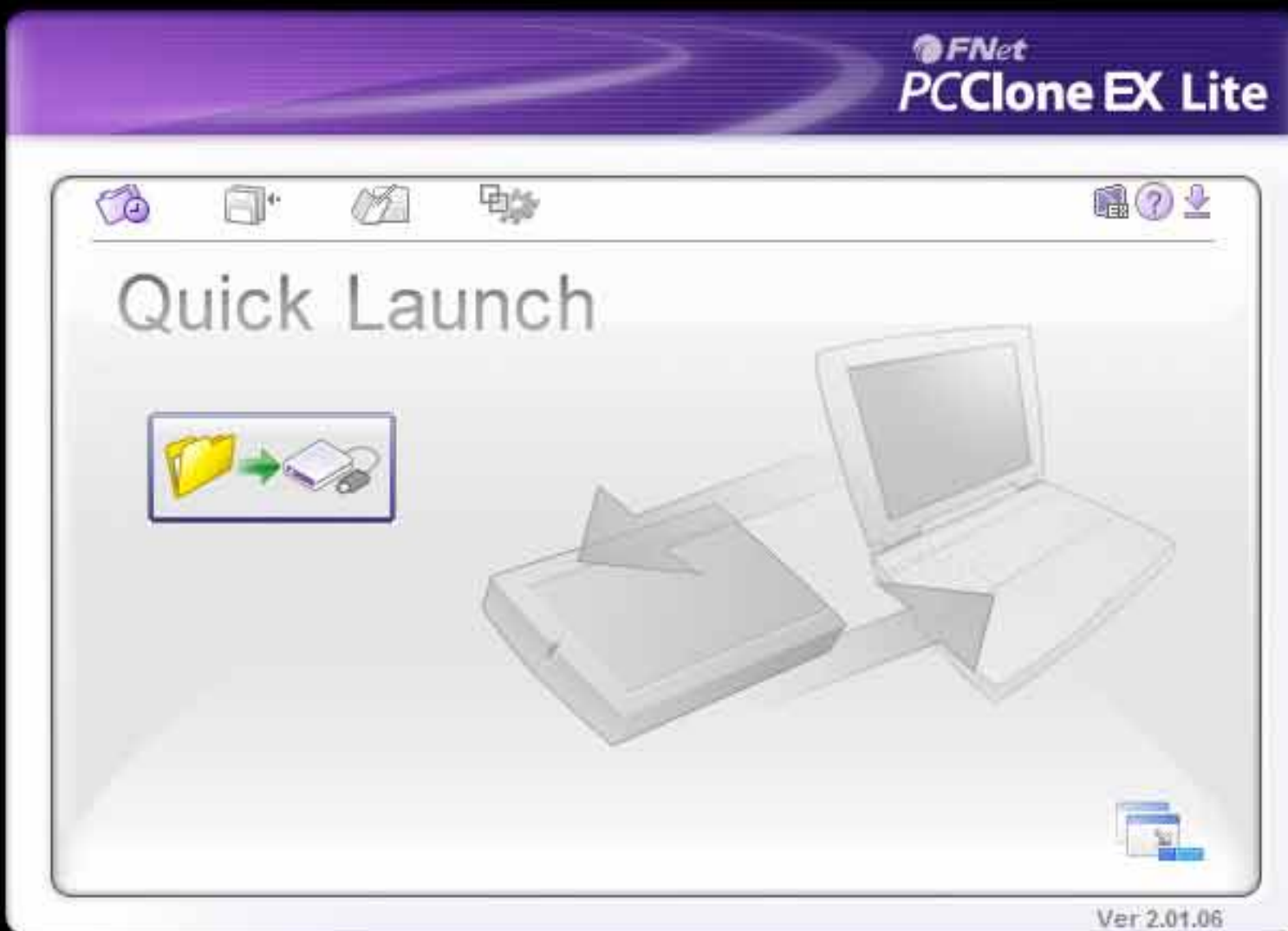




Easy one-touch backup button to backup data to one PC.

ONE TOUCH BACK-UP

Provides a powerful backup and recovery solution!



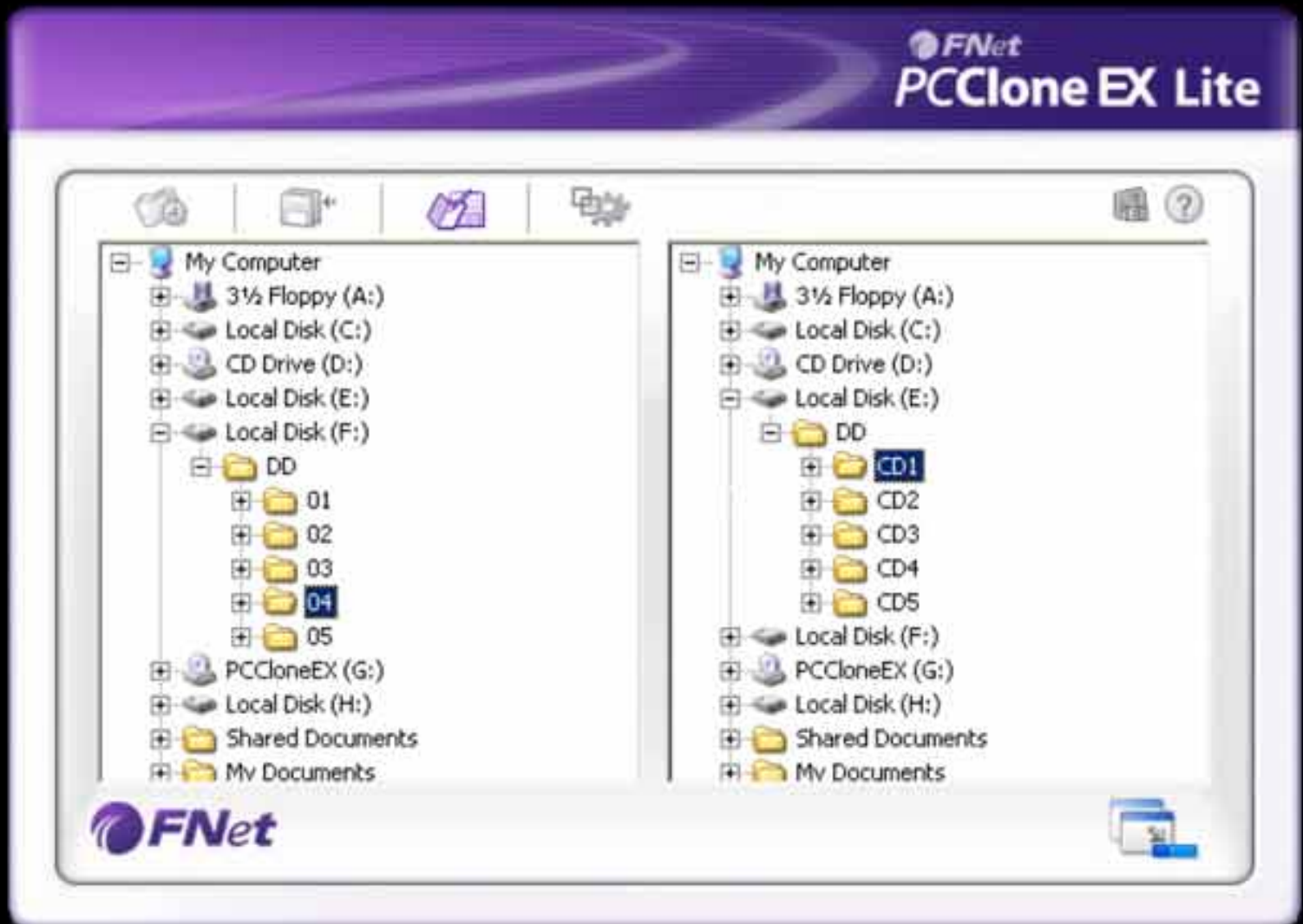
1. Go on PCClone EX lite /Quick Launch Screen, Click "File Backup"



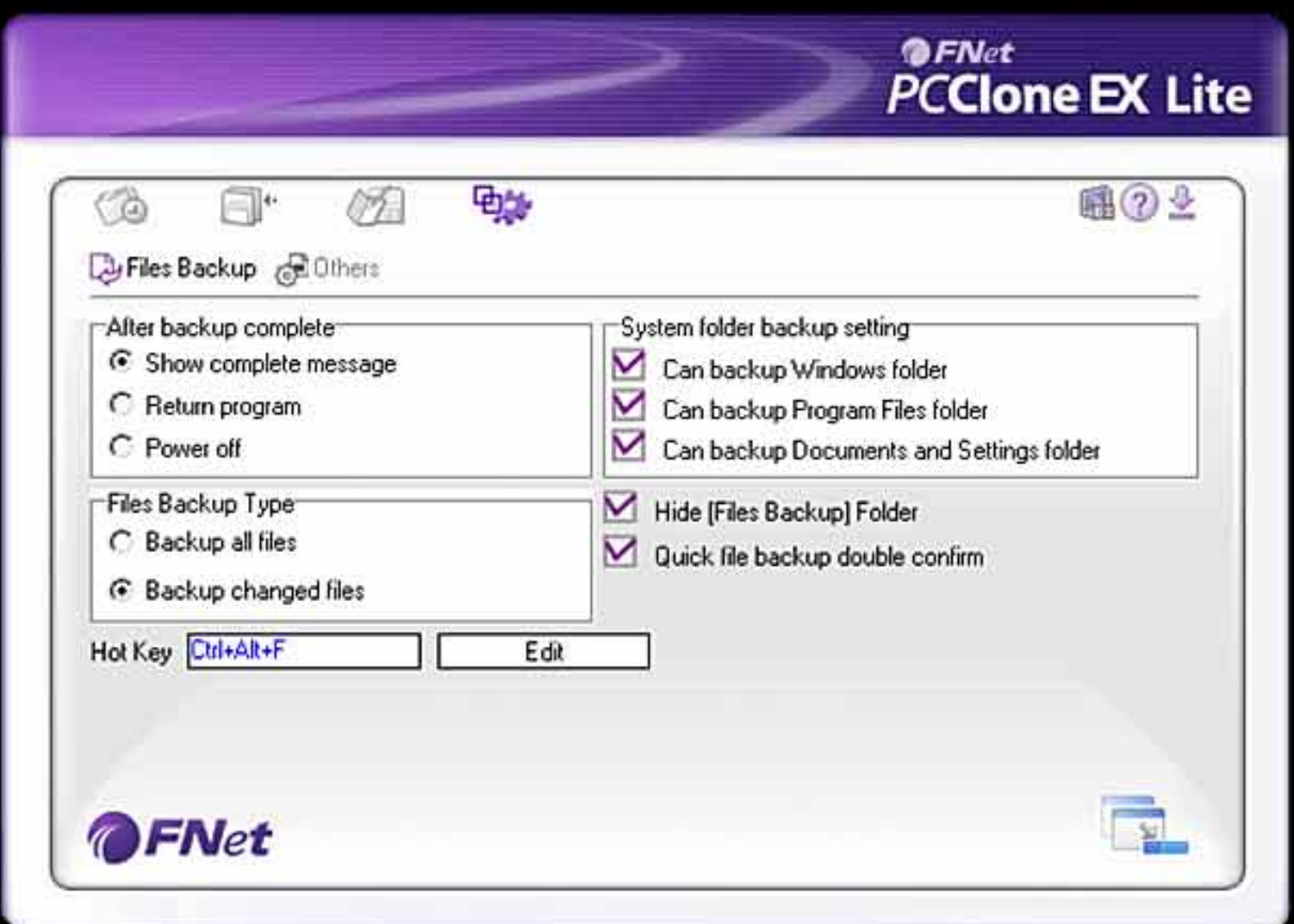


2. Select folders, Drives from the fix device, set the external HDD for backup

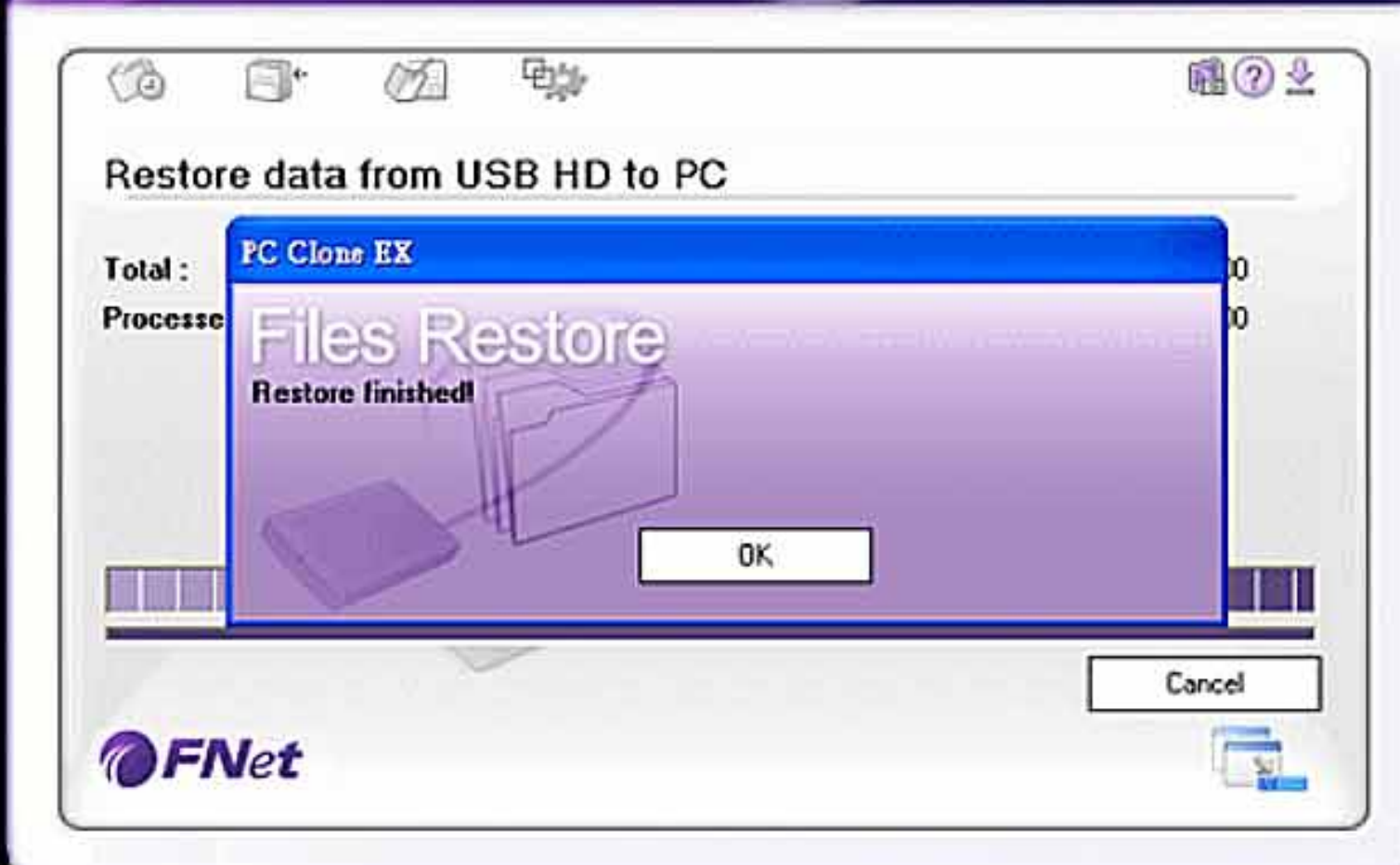
File Restore Minimized
File Backup



3. The selected folders have been moved from the fixed device to the USB device successfully



4. The options of File Backup setting



5. When backup is on progress, the window shows process and proceed time when backup is done, Click "OK" for backup finish

Built-in Serial ATA II interface

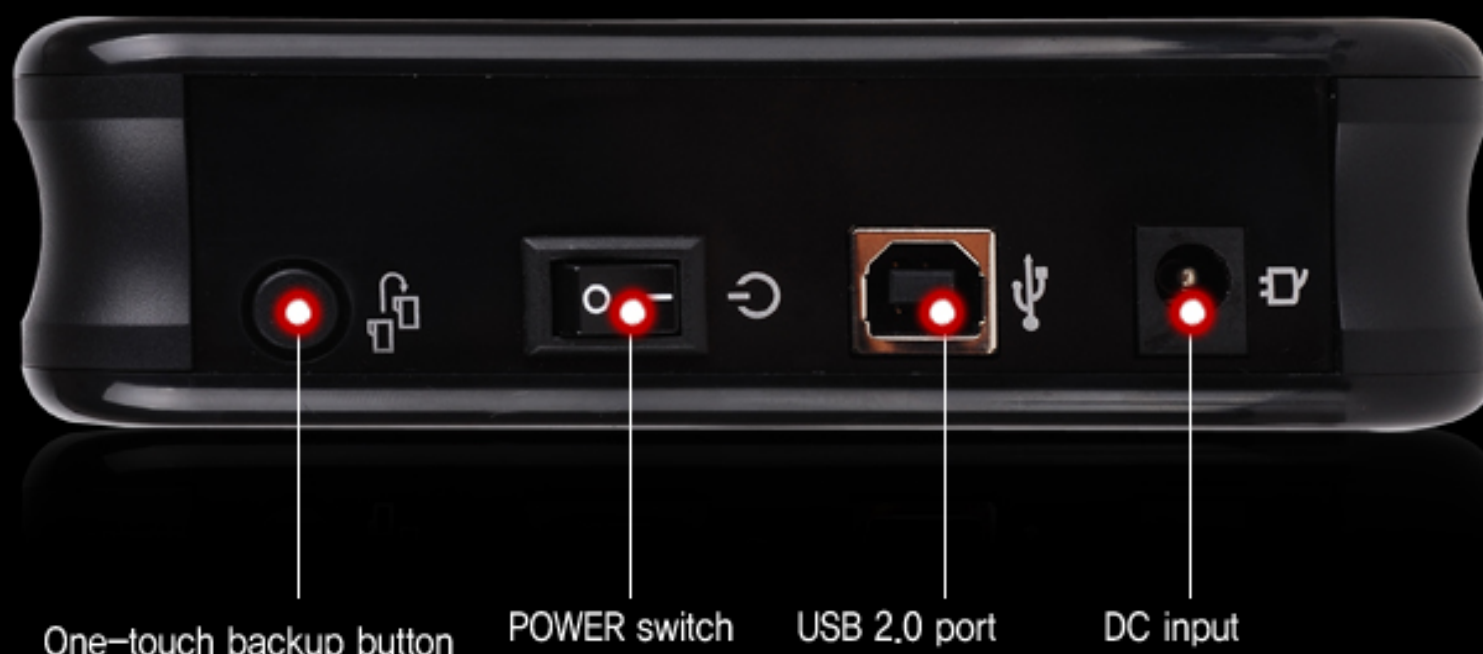
XD4 supports the new SATA II type with an all improved data transfer rate. The interface convertor bridge chipset is used with a premium semiconductor to enhance stability.



SATA interface shows improved performance, improved data transfer speed, and improved software compatibility. Easy installation, and application upgrades have increased responsiveness.

Convenient input terminal

The 3.5" case has a DC power connector for stable power supply and the frequently used button, switch and port are designed to sustain from robust impact.



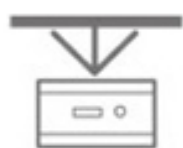
Enhanced Air circulation hole system

XD4' s fan-less air circulation system has passed strict heat safety standards.



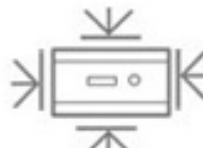
Quality test

Implementation of strict LGE quality control has improved reliability and stability



Shock test

Shock test is conducted according to company standards. The product is tested to resist from impact.



Gravity and pressure test

Pressure test is conducted to prevent from any damage occurred during unexpected gravitational drop of the product.

Vibration test

Anti-static test



Vibration test is conducted according to company standards. The product is tested to resist from damage during transport vibration.



A simulation test is conducted for the products under dry and low temperature conditions to prevent from any unexpected damage due to excess static. The product is assured of safe system performance and prevented from excess exposure of static.



Electromagnetic wave test

To guarantee customer safety from any detrimental electromagnetic waves.



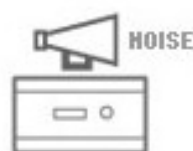
Temperature and humidity test

LGE External HDD is tested to withstand extreme conditions (temperature: $-45^{\circ}\text{C} \sim 65^{\circ}\text{C}$; humidity: $0\% \sim 95\%$). Customers are assured of any unexpected weather change.



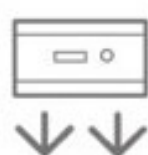
USB port Durability test

The USB Port is tested for long usage by enduring consecutive insert tests.



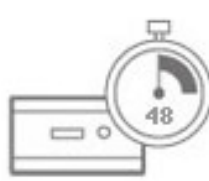
Noise test

Noise test is conducted to make certain the customer is not interfered with excess noise.



Drop test

Consecutive drop tests are conducted in and out of the box from specific heights to prevent from any unexpected product drop.



Compatibility test

The HDD and backup program are tested for any discrepancies over a long period of time from various computer operating systems .



Continuous data storage test

Big capacity files are copied and stored for over 72 consecutive hours. Comparison analysis tests are conducted to assure safe storage under any conditions.



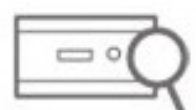
Backup program test

The backup function of the backup program is tested under multiple conditions for reliability.



OS c,ompatibility test

Test is conducted for OS compatibility under Windows 98/XP/2000/Vista and Mac.



External Case Reliability Test

Multiple reliability and safety evaluations are conducted on the external case to maximize customer quality and safety.



Field test

Field tests based on actual customer usage environment are conducted to prevent any possibility of potential defects.

Eco-friendly materials

Through implementation of strict LGE quality control standards XD4 attained Certified ROHS mark and removed all six detrimental elements (Pb, Cr, Hq, Cr+6, PBB, PBOE)





Full product configuration

Product package and the External Hard components are packed to meet safety requirements.



Improved Reliability, Durability, Performance

XD4



SPECIFICATIONS

Model : LG XD4, XD4 Combo(USB + eSATA)

Capacity : 500GB / 640GB / 750GB / 1TB

Interface : XD4 USB : USB 2.0 (v1.1 Compatible)

XD4 Combo : USB 2.0 (1.1) + eSATA

Color : Black Pearl, White Pearl, Red Wine

Size : 185(L) X 35(W) X 122(D) mm

OS Compatibility : Windows 98/ME/2000/XP/Vista

Mac 10.0 or Later