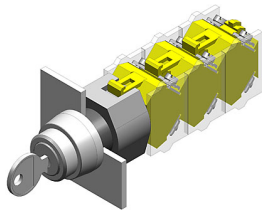


# EAO – Your Expert Partner for Human Machine Interfaces

## 704.122.0 - Keylock switch actuator 2 positions

### 704.122.0 - Keylock switch actuator 2 positions



*Attention: The preview is based on a sample product. This can differ from your current configuration.*

#### Mounting

Mounting cut-out  
Design  $\varnothing$  22,3 mm raised

#### Front

Front shape round  
Front dimension  $\varnothing$  29 mm  
Front bezel colour natural  
Front bezel material Aluminium

#### Other Attributes

Weight 0,070 kg

#### Operating-/Indication part

Switching angle 90° right

#### IP-Rating

Front protection IP65

#### Actuator

Switching action Rest(a) - Maintain(a)

#### Switching element

Rotary positions 2  
max. number of switching elements 3

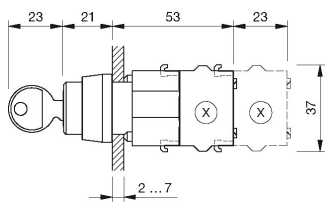
#### Function

Keylock switch

# EAO – Your Expert Partner for Human Machine Interfaces

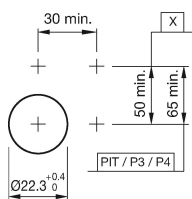
## 704.122.0 - Keylock switch actuator 2 positions

### Dimensions



X = Screw terminal

### Mounting cut-outs

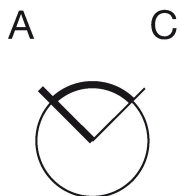


PIT = Push-in terminal

### Wiring diagram



### Switching positions



### Additional information

Locknumbers 251, lock type Ronis  
Two keys are supplied with each key lock switch  
Further lock numbers see «Technical data»  
Max. 3 switching elements can be clipped on

### Legend

Switching action: A = Rest, C = Maintained