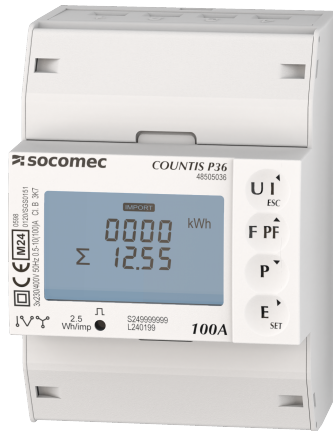


48505036

Energy Meter COUNTIS P36 Three/four conductor 3PH 100A, MID M-BUS



Strong points

- Compact design
- MID certification
- Versatile
- Easy integration
- Multi-interfaces

Compliance with standards

- IEC 62053-21
- IEC 62053-23
- IEC 62053-31
- IEC 62052-11
- IEC 61010-1
- EN 50470-1
- EN 50470-3

Link to the reference



<https://emea.socomec.com/en/reference/48505036>

COUNTIS P3x are three-phase modular electrical energy meters that enable viewing of the different energies consumed and produced, and also of powers and other measurements directly on the backlit LCD display. They enable direct connection up to 100 A and are suitable for use in sub-billing applications thanks to their MID certification.

Classification

UNSPSC	41113708
ETIM Class	EC001506
IGCC	6341

Commerce

Description	Modular active-energy meters COUNTIS P36 MID-certified Three phase - direct 100A, M-BUS type of electrical ports, fully integrated in SOCOMEC ecosystem including: Webview/screens/gateways/configuration software
Effective date	2025-11-01
Offer Life Cycle Code	40
Country of origin	CN
Former product list	48C03136 COUNTIS M36 3P 100A MBUS MID

Environmental Sustainability

Climate change - Total - Cradle to Grave [kg CO ₂ eq.]	30
Climate change - Total - Cradle to Gate [kg CO ₂ eq.]	12
SVHC > 0.1 mass percentage?	No
RoHS applicable?	Yes

ETIM - Electrical characteristics

Nominal current (In) [A]	100
Max. current (Imax) [A]	100
Nominal voltage (Un) N-L [V]	184..276
Nominal voltage (Un) L-L [V]	320..480
Frequency [Hz]	45..55
Power consumption [W]	1
Accuracy class	B
Pole type	Three conductor/four conductor
Energy type	Effective power and reactive power
Suitable for	Purchase/supply
Tariff type	Multi-tariff
Tariff control	External
Measurement type load profile	No
Calibrated	Yes
Pulse output	Electrical
Pulse type	D0
Pulse rate [Imp/kWh (kvarh)]	10..10

ETIM - Mechanical characteristics

Escapement mechanism	No
----------------------	----

Mounting method	DRA (DIN-rail adaptor)
Width in number of modular spacings	4
Width [mm]	72
Depth [mm]	66
Height [mm]	100
With lock code	No
Degree of protection (IP)	IP20
ETIM - Technical features	
Type of meter	Electronic
Model	Direct measurement
Approval	Measuring Instruments Directive
Type of indication	Digital
Type of interface	M-bus (wired)
EEC40 signature	No
Logistics	
GTIN/EAN	3596033319457
Customs number	9028301900
Price unit	PC
Weight of the packing unit [kg]	0.38
Length of the packing unit [m]	0.08
Width of the packing unit [m]	0.12
Depth of the packing unit [m]	0.08
Technical Characteristics	
Height [mm]	100
Width [mm]	72
Depth [mm]	66
Application	Metering
Communication ports	M-BUS
Model	P36
Type	3PH 100A, MID