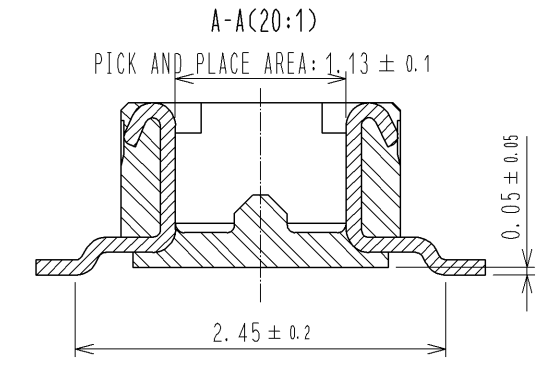
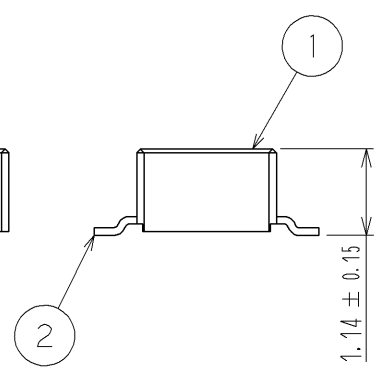
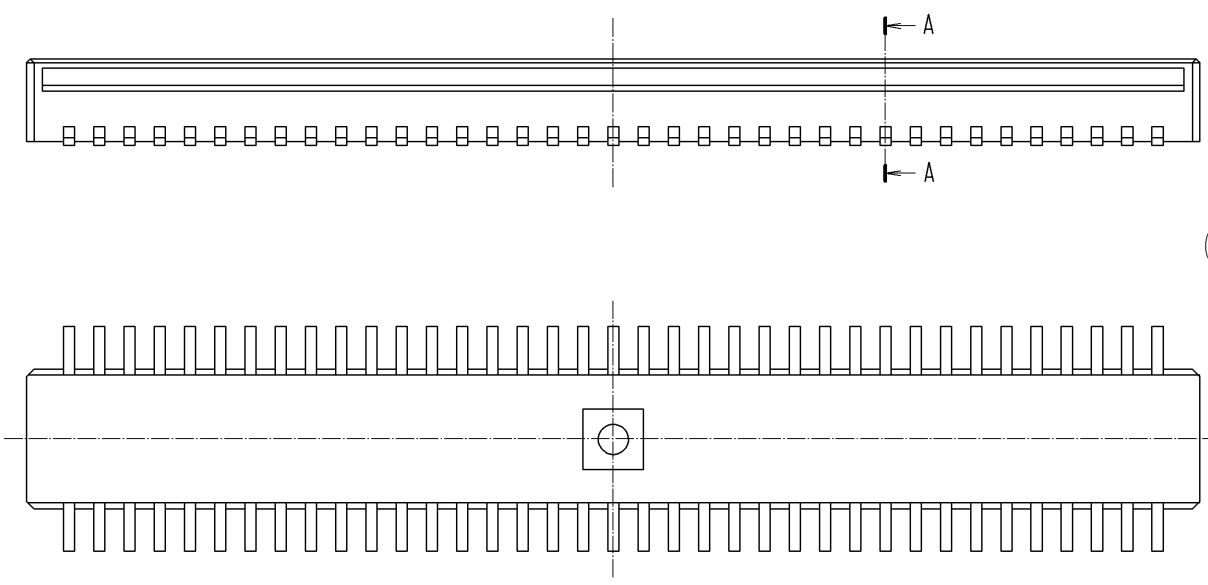


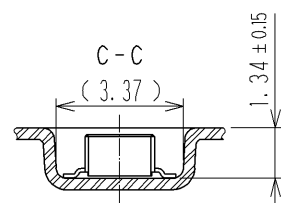
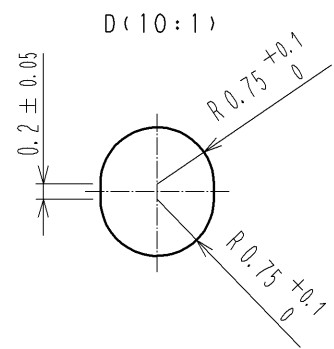
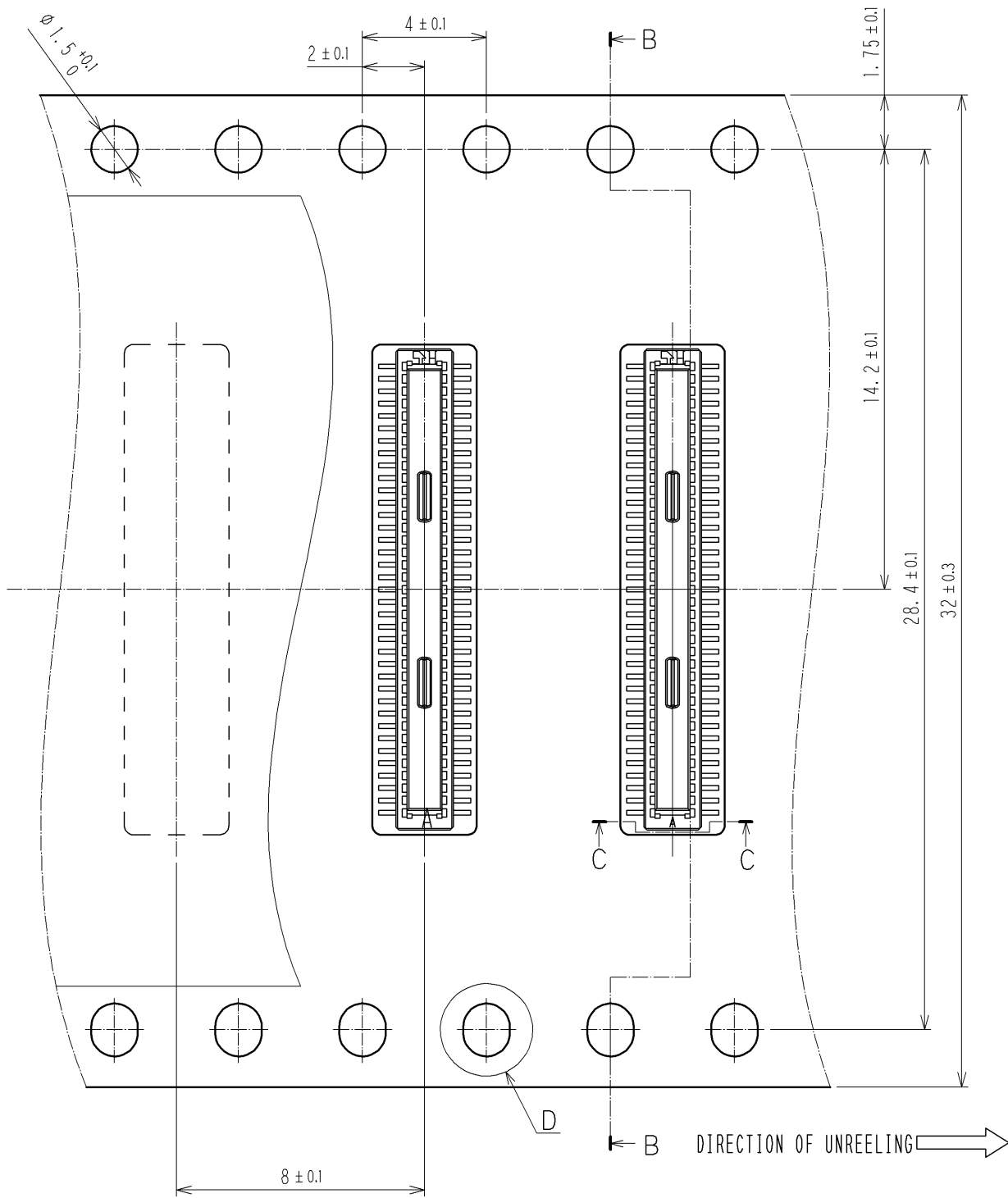
RECOMMENDED METAL MASK THICKNESS : 120 μm
 RECOMMENDED METAL MASK OPENING RATIO : 80% FOR LEAD PAD



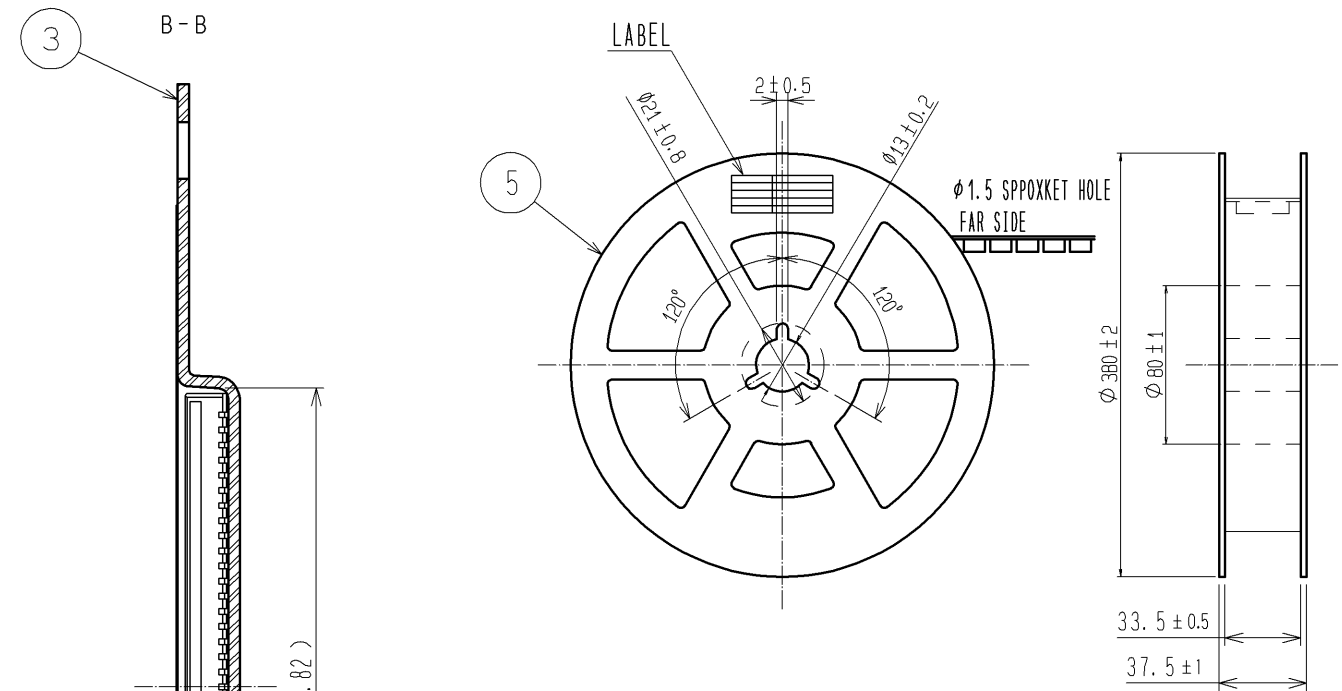
- NOTES) 1. ALL LEADS CO-PLANARITY SHALL BE 0.1MAX.
 2. EACH ONE CONTACT AT 4 CORNERS SHALL BE USED AS METAL HOLD DOWN.
 3. HRS MARK AND CAV NO. IS INDICATED IN APPROXIMAL POSITION SHOWN.

2	PHOSPHOR BRONZE	CONTACT AREA: GOLD 0.05 μm MIN	5	PS	BLACK			
		SMT LEAD: GOLD 0.05 μm MIN			POLYESTER	CLEAR, COVER TAPE		
		UNDERPLATING: NICKEL 1 μm MIN			PS	CLEAR, EMBOSSED CARRIER TAPE		
1	LCP	BLACK, UL94V-0	3					
NO.	MATERIAL	FINISH, REMARKS	NO.	MATERIAL	FINISH, REMARKS			
UNITS mm		SCALE 10:1	COUNT △	DESCRIPTION OF REVISIONS		DESIGNED	CHECKED	DATE
HRS HIROSE ELECTRIC CO., LTD.		APPROVED : KH. IKEDA 09.02.26	DRAWING NO. EDC3-311639-05					
		CHECKED : TS. MIYAZAKI 09.02.26	PART NO. DF40C-70DP-0.4V(51)					
		DESIGNED : TK. SUZUKI 09.02.20	CODE NO. CL684-4015-2-51					
		DRAWN : TK. SUZUKI 09.02.20						

SCALE (5:1)



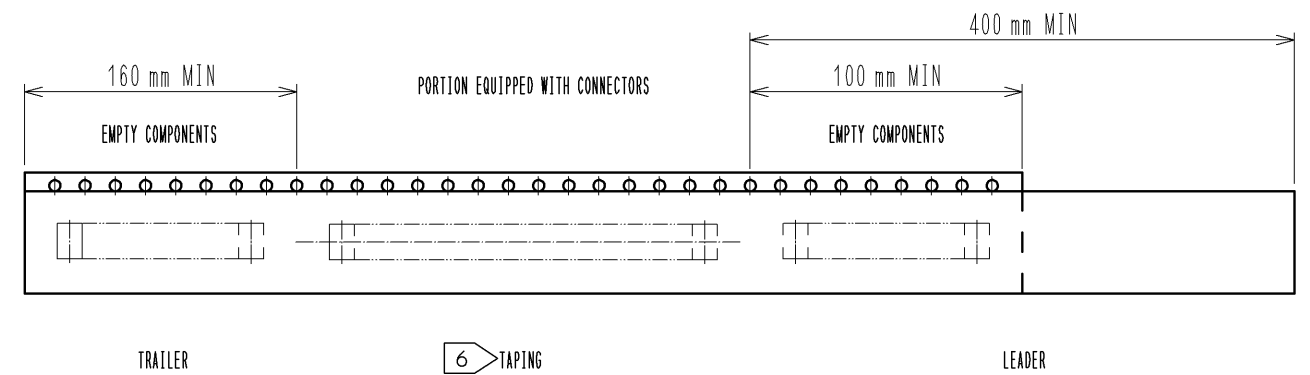
STYLE AND DIMENSION OF REEL (FREE)



7 DETAIL OF LABEL

製造年月日	** ** *
製品コード	CL684-4015-2-51
製品名	DF40C-70DP-0.4V(51)
数量	5000
納入者	ヒロセ電機(株)

- NOTES)
- PER REEL 5000 CONNECTORS.
 - THE DIMENSIONS IN PARENTHESSES ARE FOR REFERENCE.
 - REFER TO JIS C 0806(PACKING OF COMPONENTS FOR AUTOMATIC HANDLING)
 - DETAIL OF PART NO. LABEL IS WRITTEN IN JAPANESE. PART NO. LABEL DESCRIBS THE FOLLOWING INFORMATION FROM TOP.
 PRODUCTION DATE:
 PRODUCT CODE:CL684-4015-2-51
 PART NUMBER:DF40C-70DP-0.4V(51)
 NUMBER OF PIECES:5000 PIECES
 SUPPLIER NAME:HIROSE ELECTRIC CO., LTD.



HRS	DRAWING NO.	EDC3-311639-05
	PART NO.	DF40C-70DP-0.4V(51)
	CODE NO.	CL684-4015-2-51
		$\triangle 2/2$