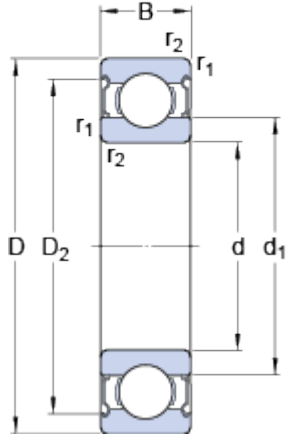


# 6007-2Z

SKF Explorer

## Dimensions



d	35	mm
D	62	mm
B	14	mm
d <sub>1</sub>	43.75	mm
D <sub>2</sub>	55.61	mm
r <sub>1,2</sub> min.	1	mm

## Abutment dimensions



d <sub>a</sub> min.	39.6	mm
d <sub>a</sub> max.	43.7	mm
D <sub>a</sub> max.	57.4	mm
r <sub>a</sub> max.	1	mm

## Calculation data

Basic dynamic load rating	C	16.8	kN
Basic static load rating	C <sub>0</sub>	10.2	kN
Fatigue load limit	P <sub>u</sub>	0.44	kN
Reference speed		24000	r/min
Limiting speed		12000	r/min
Calculation factor	k <sub>r</sub>	0.025	
Calculation factor	f <sub>0</sub>	15	

## Mass

Mass bearing

0.16

kg

---