

WHEEL DG 80X25/40 NYLON BEARING SWIVEL FORK  
M22 + BRAKE

Wheel series DG

Wheels with elastic grey rubber ring on a thermoplastic core, with standard or stainless steel roller bearings or nylon friction bearings. The wheel is fitted with bushes.

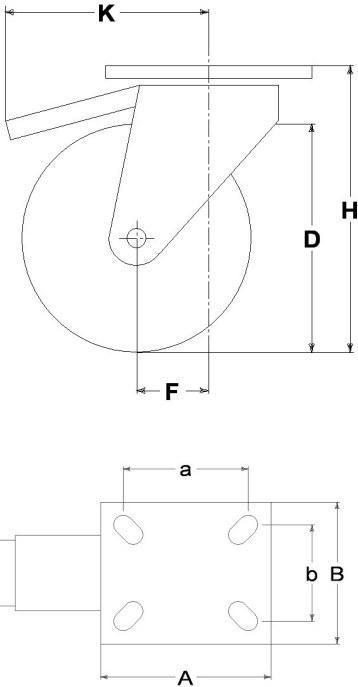
Castor series M22

M22 series, Medium-light pressed steel fork assemblies; swivel version has double ball raceways. Zincplated. Trailing foot brake - total stop.



Technical data

|                            |     |           |
|----------------------------|-----|-----------|
| Wheel diameter             | D   | 80 mm     |
| Tyre width                 | E   | 25,0 mm   |
| Bore diameter              | d   | 12 mm     |
| Weight article             |     | 0,710 kg  |
| Hub width                  | L   | 40 mm     |
| Overall height             | H   | 106 mm    |
| Top plate outer dimensions | AxB | 102x83 mm |
| Bolt hole spacing          | axb | 76x55 mm  |
| Bolt hole spacing          | axb | 80x60 mm  |
| Fixing bolt diameter       | g   | M8        |
| Offset                     | F   | 33 mm     |
| Fork width                 | U   | 40 mm     |
| Load Capacity              |     | 55 kg     |



Related Articles

- Spare part wheel: [13104G](#)  
Basic version: [13904G](#)  
Version with thread-guards: [13904GPF](#)  
Version with trailing brake and thread-guards: [13904GFRPF](#)

GENERAL INFORMATION / RECOMMENDATIONS AND WARNINGS

The cited text and the complete catalogue in their most up-dated versions are available in the OEM's website page [www.lagspa.it/downloads](http://www.lagspa.it/downloads). The dimensions, descriptions, specifications and illustrations herein are indicative and subject to variations without notice. The fact that products are illustrated herein does not necessarily imply they are available from stock nor does it place us under any obligation to supply them. Tests carried out refer to the original products with original accessories: the replacement of one of the components with others of different manufacture might prevent the same results from being achieved and will automatically invalidate any guarantee. Please contact our technical service concerning any special application.