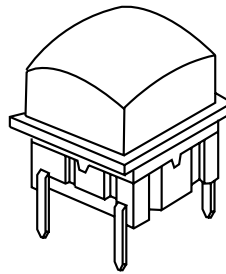


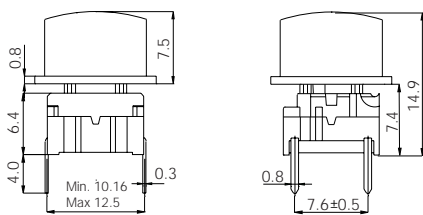
# multimec® 3F+1T/1U/1V



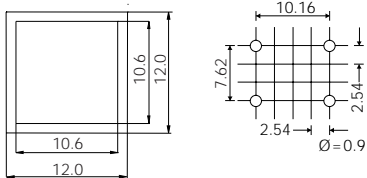
## Technical Data:

- through-hole or SMD
- 50mA/24VDC
- single pole/momentary
- 10.000.000 operations life time
- IP67 sealing
- temperature range:  
low temp: -40/+115°C  
high temp: -40/+160°C

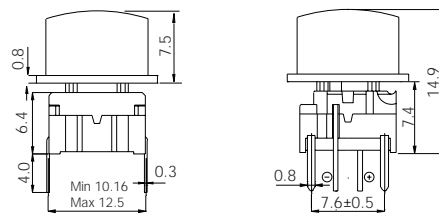
### Dimensions (through-hole)



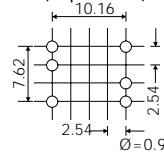
### PCB layout



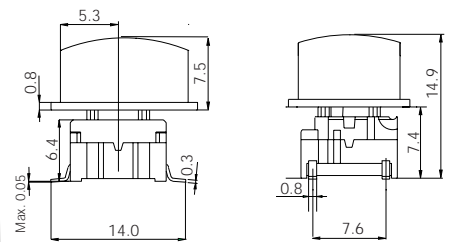
### Dimensions (w/LED)



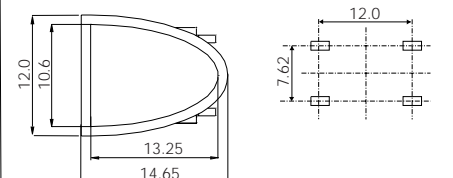
### PCB layout (top view)



### Dimensions (SMD)



### PCB layout



## HOW TO ORDER

<b>3 F</b>	<input type="checkbox"/>	<input type="checkbox"/>	+	<input type="checkbox"/>	<input type="checkbox"/>
Switch	Mounting	L 6 low temp. H 9 high temp.		Cap	00 blue 03 grey 08 red 09 black custom colours on request
	T through-hole S surface mount			1T	
Standard versions:				1U	
3FTL6				1V	
3FTH9					
3FSH9					
3FSH9R					

<b>3 F</b>	<b>T</b>	<input type="checkbox"/>	<input type="checkbox"/>	+	<input type="checkbox"/>	<b>1 6</b>
Switch	Mounting	L 6 low temp. H 9 high temp.	LED		Cap	transparent white
	T through-hole		23 green 45 yellow 88 red		1T	
Standard versions:					1U	
3FTL623					1V	
3FTL645						
3FTL688						

Ordering example: 3FTL645 + 1V16