

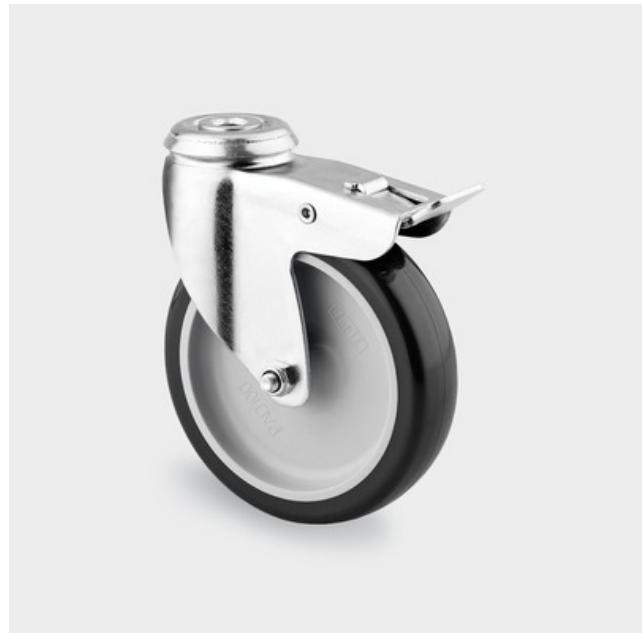
Product Information



1477PAO075P30-11

EAN 4031582338492

Swivel castor with total lock, tail end of castor, housing made of pressed steel, bright zinc plated, blue passivated, double ball bearing swivel head, bolt hole. Wheel centre made of Polypropylene, Tread: Polyurethane, plain bearing



Technical Data

Wheel diameter	75 mm
Width of Tread	25 mm
Centre hole	11 mm
Offset	25 mm
Swivel Interference	156 mm
Overall height	100 mm
Temperature	- 20 / + 60 °C
Standard	EN 12530
Swivel Radius	78 mm
Hardness of tread	Shore D 40
Load capacity	60 kg
Load capacity (static)	120 kg

Roll performance	+	+	+	+	+
Movement noise	+	+	+	+	+
Attrition	+	+	+	+	+
Corrosion resistance	+	+	+	+	+

Product Information



1477PAO075P30-11

EAN 4031582338492

