

## 8878 - Multiple Application Switch Mode Power Supply



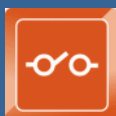
- ▶ DC output selectable to 5, 12, or 15V
- ▶ Output current 2.7A max
- ▶ Switched mode efficiency without high voltages or HF switching noise
- ▶ Regulated low noise output
- ▶ Power on & output supply LEDs
- ▶ Works from AC or DC inputs (as per ranges below)
- ▶ Includes crowbar output protection for 12V working as standard
- ▶ Built-in overload & short circuit protection
- ▶ Operational flexibility at very reasonable cost

The 8878 is a versatile multiple application secondary switched mode power supply specifically designed to provide the user with great flexibility in configuration. The 12V nominal output can be set between 10.2 & 13.3V, with the 15V output set at between 14 & 17.2V by preset potentiometer. As supplied model 8878 is equipped for 12V output and includes components plus instructions for easy conversion to 5V or 15V output.

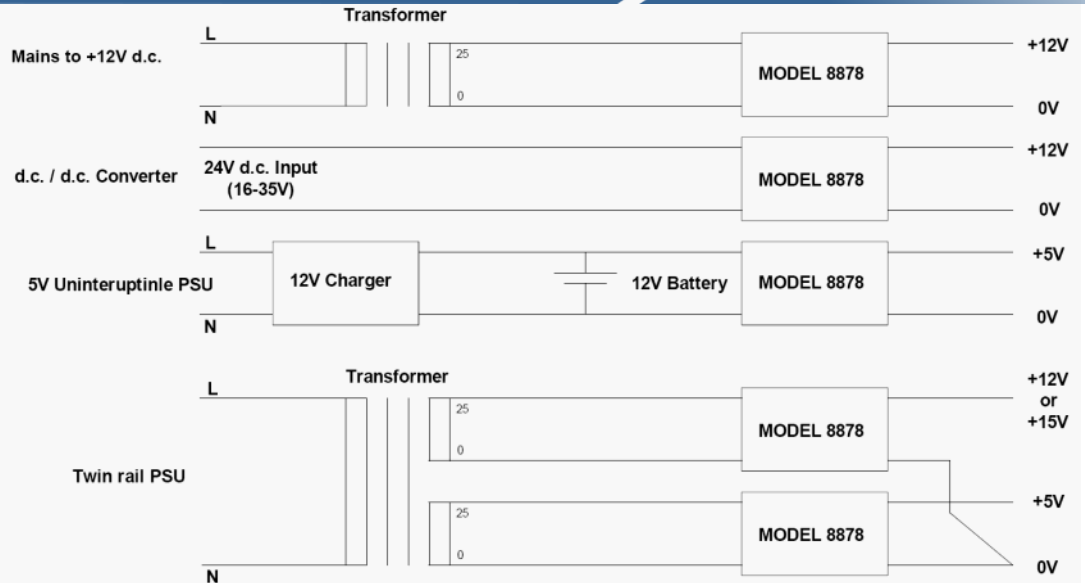
### TECHNICAL SPECIFICATION

	+12V Nominal	+15V Nominal	+5V Nominal
SUPPLIES			
a.c. Input	17 to 25 a.c.	18 to 25 a.c.	11 to 25 a.c.
Frequency	50/60Hz		
d.c Input	16 to 35 d.c.	19 to 35 d.c.	10 to 35 d.c.
OUTPUTS	Adjustable	Adjustable	Fixed
Voltage Range	10.2 to 13.3 d.c.	14 to 17.2 d.c.	5 d.c.
Output Current	2.7A max		
Short Circuit Current	3.0A		
Line Regulation	(min to max) 10 mV		
Load Regulation	(0 to 100%) 20mV		
Output Ripple	50 mV max		
USER OPTIONS			
Voltage Selection	Use as supplied	Remove R2	Remove R2 & R3, Fit R20
Crowbar Facility	Use as supplied	Replace D6 with supplied 18V Zener Diode	Replace D6 with supplied 6.2V Zener Diode
GENERAL DETAILS			
Switching Frequency	58kHz nom.		
Dimensions	107 x 69 x 40mm		
Fixing Centres	55.88 x 94mm		
Fixing Hole Size	4.0mm ø		
Operating Temp.	0 to 40°C		

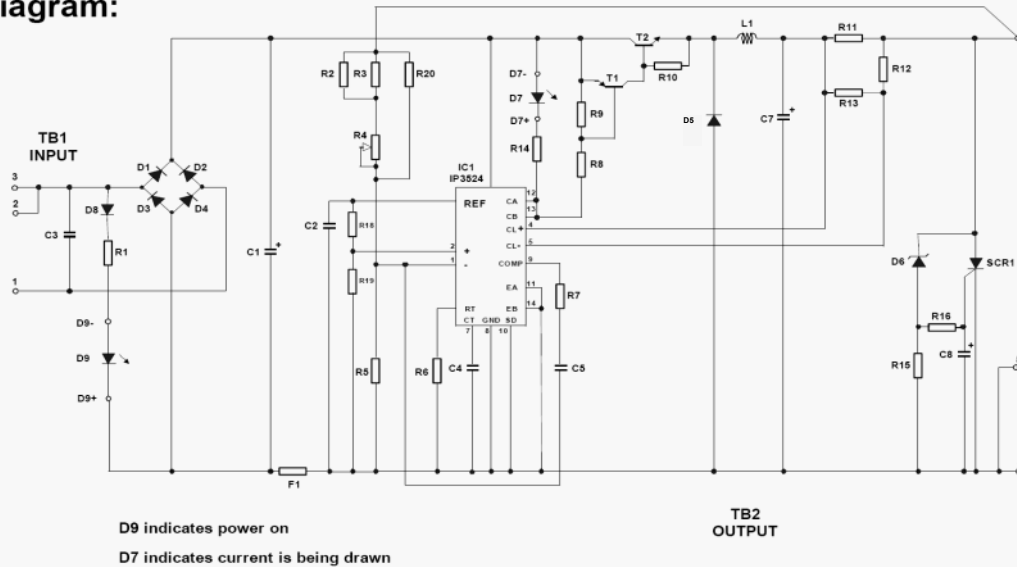
DL 4516800-8



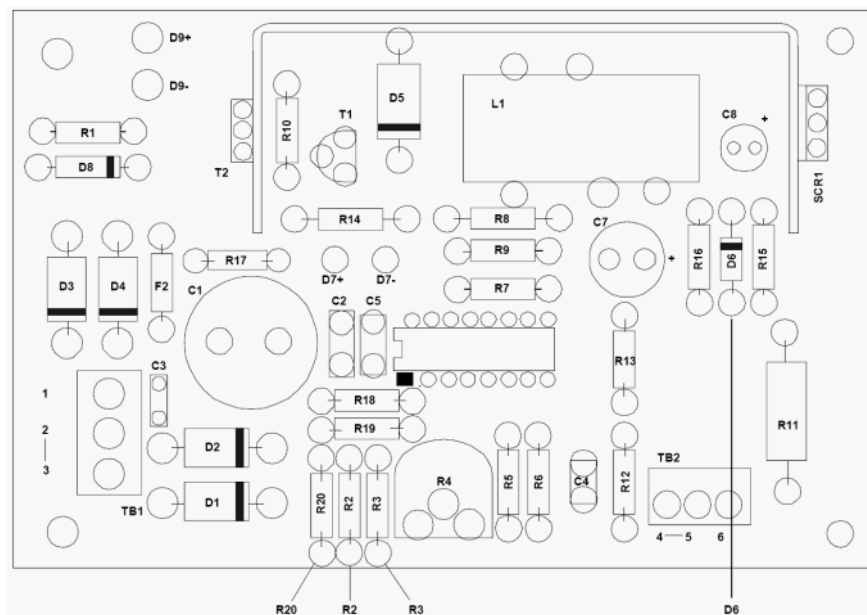
## Typical Applications -



## Circuit Diagram:



## Component Layout -



Ordering Information	Model Number	Part Number
	8878	PSU-8878-010

