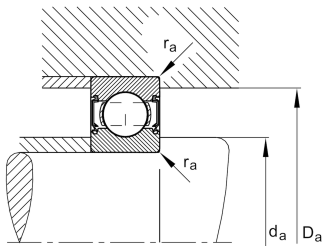
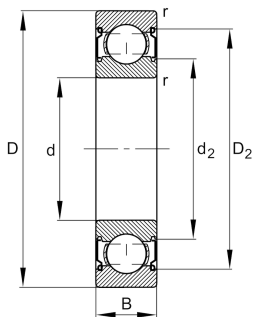


**FAG****6208-C-Z**

Deep groove ball bearing

Deep groove ball bearing 62...-C-Z, single row, Generation C, shield, steel sheet metal cage

Technical information



Your current product variant

Changed internal design	C	GenerationC
Sealing	Z	Non-contact shield on one Side
Cage	JN	Steel sheet metal
Tolerance class	P6	Class6 (P6), better than PN
Dimensional / heat stabilization	SN	Rings dimensional stabilized up to 120°
Lubricant	Without	Bearing not greased
Radial internal clearance	CN (Group N)	Normal internal clearance
Bore type	Z	Cylindrical

Main Dimensions & Performance Data

d	40 mm	Bore diameter
D	80 mm	Outside diameter
B	18 mm	Width
C_r	33,500 N	Basic dynamic load rating, radial
C_{0r}	17,800 N	Basic static load rating, radial
C_{ur}	1,230 N	Fatigue load limit, radial
n_G	13,600 1/min	Limiting speed
n_{gr}	10,500 1/min	Reference speed
$\approx m$	0.345 kg	Weight



Mounting dimensions

d a min	47 mm	Minimum diameter shaft shoulder
D a max	73 mm	Maximum diameter of housing shoulder
r a max	1 mm	Maximum fillet radius

Dimensions

r min	1.1 mm	Minimum chamfer dimension
D 1	67.6 mm	Shoulder diameter outer ring
D 2	70.56 mm	Caliber diameter outer ring
d 1	51.88 mm	Shoulder diameter inner ring
d 2	49.3 mm	Caliber diameter inner ring

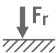





Temperature range

T min	-30 °C	Operating temperature min.
T max	120 °C	Operating temperature max.

Calculation factors

f 0	14	Calculation factor
-----	----	--------------------

Characteristics

	Radial load
	Axial load in one direction
	Axial load in two directions
	Grease Lubrication
	Oil Lubrication
	Sealed on one side