

747844-2 ✓ ACTIVE

AMPLIMITE | AMPLIMITE HD-20

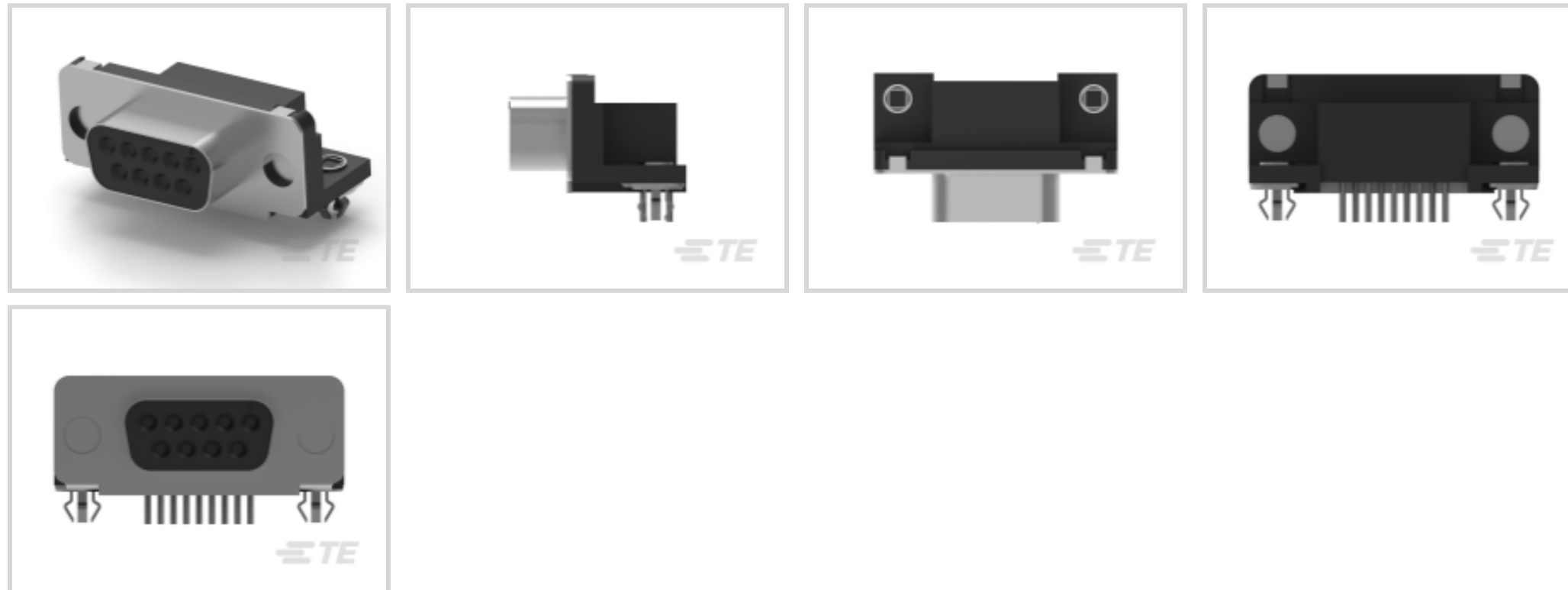
TE Internal #: 747844-2

9 Position D-Shaped Connector, Receptacle, Board-to-Board,  
Board Mount, Shell Size 1, 2.74 mm [.108 in] Centerline, AMPLIMITE  
HD-20

[View on TE.com >](#)



Connectors > D-Shaped Connectors > D-Sub Receptacle Assembly: Right Angle, Shell Size 1, 2.74mm



Number of Positions: 9

Connector & Housing Type: **Receptacle**

Connector System: **Board-to-Board**

Connector Mounting Type: **Board Mount**

Connector Shell Size: 1

[All D-Sub Receptacle Assembly: Right Angle, Shell Size 1, 2.74mm \(64\)](#)

## Features

### Product Type Features

Ground Feature Type	Grounding Straps
Shell Material Configuration	Front Metal Shell
Connector & Housing Type	Receptacle
Connector System	Board-to-Board
Connector Shell Size	1
Connector & Contact Terminates To	Printed Circuit Board

### Configuration Features

Number of Positions	9
Number of Rows	2
PCB Mount Orientation	Right Angle

### Body Features

Assembly Process Feature Material	Copper Alloy
-----------------------------------	--------------



Insert Material	Zinc
Shell Plating Material	Tin
Primary Product Color	Black
Connector Profile	Standard

### Contact Features

	30 µin
Contact Underplating Material	Nickel
Contact Mating Area Plating Material	Gold (Au)
Contact Base Material	Phosphor Bronze
PCB Contact Termination Area Plating Material	Tin-Lead
Contact Shape & Form	Round
Contact Current Rating (Max)	6 A
Contact Options	Installed

### Termination Features

Termination Post & Tail Diameter	.66 mm[.026 in]
Termination Method to PCB	Through Hole - Solder
Termination Post & Tail Length	3.18 mm[.125 in]

### Mechanical Attachment

Mounting Feature Plating Material	Tin
Mounting Feature Material	Brass
Mounting Hole Diameter	3.18 mm[.125 in]
Assembly Process Feature Plating Material	Tin-Lead
Connector Mounting Type	Board Mount
PCB Mount Retention	With
PCB Mount Retention Type	Boardlock
Mating Retention	Without
Mating Retention Type	Mounting Holes

### Housing Features

Housing Material	Thermoplastic
Shell Material	Steel
Centerline (Pitch)	2.74 mm[.108 in]

### Dimensions

--	--



PCB Thickness (Recommended)	1.57 mm[.062 in]
-----------------------------	------------------

Row-to-Row Spacing	2.84 mm[.112 in]
--------------------	------------------

### Usage Conditions

Operating Temperature Range	-55 – 105 °C[-67 – 221 °F]
-----------------------------	----------------------------

### Operation/Application

Shielded	Yes
----------	-----

Circuit Application	Signal
---------------------	--------

### Industry Standards

UL Flammability Rating	UL 94V-0
------------------------	----------

Compatible With Approved Standards Products	UL E28476
---	-----------

### Packaging Features

Packaging Quantity	130
--------------------	-----

Packaging Method	Tray
------------------	------

### Product Compliance

[For compliance documentation, visit the product page on TE.com>](#)

EU RoHS Directive 2011/65/EU	Not Compliant
------------------------------	---------------

EU ELV Directive 2000/53/EC	Compliant with Exemptions
-----------------------------	---------------------------

China RoHS 2 Directive MIIT Order No 32, 2016	有害物质含量超出标准 Restricted Substance(s) Above Threshold
---	--

EU REACH Regulation (EC) No. 1907/2006	Current ECHA Candidate List: JUNE 2025 (250) Candidate List Declared Against: JUNE 2025 (250) SVHC > Threshold: Pb (13% in 4690948374)
--	---

**Article Safe Usage Statements:**  
Do not eat, drink or smoke when using this product. Wash thoroughly after handling. Recycle if possible and dispose of the article by following all applicable governmental regulations relevant to your geographic location.

Halogen Content	Not Low Halogen - contains Br or Cl > 900 ppm.
-----------------	--

Solder Process Capability	Wave solder capable to 265°C
---------------------------	------------------------------

#### Product Compliance Disclaimer

This information is provided based on reasonable inquiry of our suppliers and represents our current actual knowledge based on the information they provided. This information is subject to change. The part numbers that TE has identified as EU RoHS compliant have a maximum concentration of 0.1% by weight in homogenous materials for lead, hexavalent chromium, mercury, PBB, PBDE, DBP, BBP, DEHP, DIBP, and 0.01% for cadmium, or qualify for an exemption to these limits as defined in the Annexes of Directive 2011/65/EU (RoHS2). Finished electrical and electronic equipment products will be CE marked as required by Directive 2011/65/EU. Components may not be CE marked. Additionally, the part

numbers that TE has identified as EU ELV compliant have a maximum concentration of 0.1% by weight in homogenous materials for lead, hexavalent chromium, and mercury, and 0.01% for cadmium, or qualify for an exemption to these limits as defined in the Annexes of Directive 2000/53/EC (ELV). Regarding the REACH Regulation, the information TE provides on SVHC in articles for this part number is based on the latest European Chemicals Agency (ECHA) 'Guidance on requirements for substances in articles' posted at this URL: <https://echa.europa.eu/guidance-documents/guidance-on-reach>

## Compatible Parts



TE Part # CAT-AM7-248H3  
IDC D-Sub: Plug Assembly, Wire to Wire, Signal, 2.77 mm



TE Part # 1-747944-5  
09 SHLDG ENCL PLUG, LEAD FREE

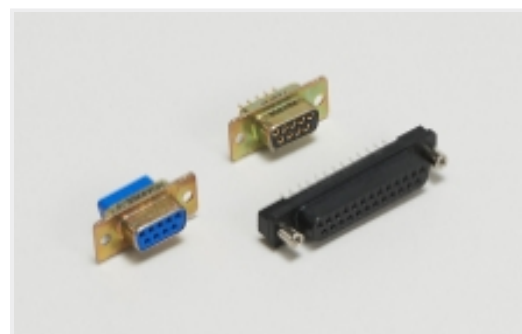


TE Part # 206509-1  
SIZE 20 KEYING PLUG



TE Part # CAT-AM7-H3  
IDC D-Sub: Plug Assembly, Low Profile, Signal, 2.77 mm

## Also in the Series | AMPLIMITE HD-20



D-Shaped Connectors(285)

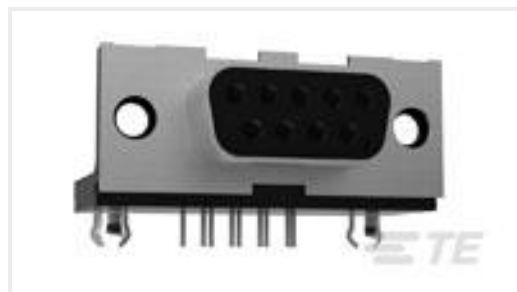


PCB D-Sub Connectors(285)

## Customers Also Bought



TE Part #87227-5  
10 MODII HDR DRST UNSHRD .100



TE Part #1-106505-2  
9P.HDP20 REC.ASSY.



TE Part #1053354-1  
2062 0000 00,SMA PCB VERT JACK



TE Part #2226127-1  
RTM GUIDE PIN KIT ASSY, VITA46, MACHINED



TE Part #2323863-3  
V67.3 PLUG-IN C MODULE, 10 POS, AL



TE Part #5208008-1  
HD-20 PLUG 25P VERT



TE Part #CAT-076-BNCRABAY  
BNC RF Connector: Male (Jack), Right Angle



TE Part #1-5499913-0  
A/L UNIV HDR 50P RA SHT LAT



## Documents

### Product Drawings

[09 MSFL RCPT RA 318 \(FM,BL\)](#)

English

### CAD Files

[3D PDF](#)

3D

Customer View Model

[ENG\\_CVM\\_CVM\\_747844-2\\_AC.2d\\_dxf.zip](#)

English

Customer View Model

[ENG\\_CVM\\_CVM\\_747844-2\\_AC.3d\\_igs.zip](#)

English

Customer View Model

[ENG\\_CVM\\_CVM\\_747844-2\\_AC.3d\\_stp.zip](#)

English

By downloading the CAD file I accept and agree to the [Terms and Conditions](#) of use.

### Product Specifications

[Application Specification](#)

English

### Agency Approvals

[UL Report](#)

English