

AC Filter for PCB Mounting in Flat Aluminum Housing

Standard- or Medical-Filter



Description

- Chassis: PCB Mounting, from top
- Line filter in standard and medical version, 1-stage, standard attenuation
- For PCB mounting

Approvals

- VDE Certificate Number: 40004673
- UL File Number: E72928

Characteristics

- Aluminum case provides good shielding
- Designed for standard applications
- Protection against interference voltage from the mains
- Possible interferences generated in the equipment are strongly attenuated
- Universal line filter for standard applications
- Suitable for use in equipment according to IEC/UL 60950

Other versions on request

- Medical version M80

References

Alternative: Standard version

Weblinks

[pdf-datasheet](#), [html-datasheet](#), [General Product Information](#), [Approvals](#), [CE declaration of conformity](#), [RoHS](#), [CHINA-RoHS](#), [REACH](#), [e-Shop](#), [SCHURTER-Stock-Check](#), [Distributor-Stock-Check](#), [Detailed request for product](#)

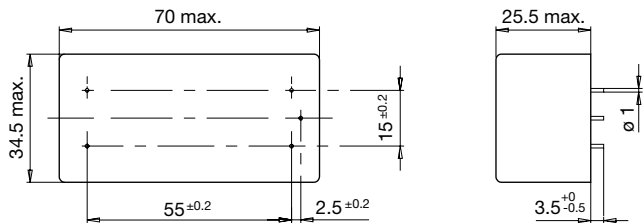
Technical Data

Ratings IEC	2 - 16 A @ Ta 40 °C / 250 VAC; 50Hz
Ratings UL/CSA	2 - 16 A @ Ta 40 °C / 125 VAC; 60Hz
Leakage Current	standard < 0.5 mA (250 V / 60Hz)
Dielectric Strength	> 1.7 kVDC between L-N > 2.7 kVDC between L/N-PE Test voltage (2 sec)
Allowable Operation Temp.	-25 °C to 100 °C
Climatic Category	25/100/21 acc. to IEC 60068-1
Protection Class	Suitable for appliances with protection class I acc. to IEC 61140
Terminal	For PCB mounting , tin-plated
Material: Housing	Aluminum

Line Filter	Standard and Medical Version, IEC 60939, UL 1283, CSA C22.2 no. 8 Technical Details
MTBF	> 200'000h acc. to MIL-HB-217 F

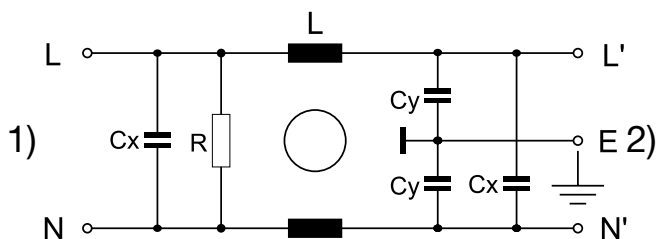
Dimension

Case 72



Diagrams

Standard version



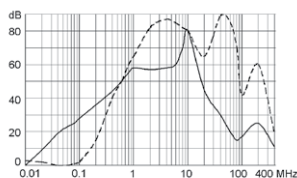
- 1) Line
- 2) Load

Attenuation Loss

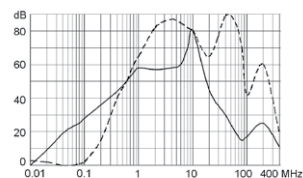
Standard version

--- differential mode ____ common mode

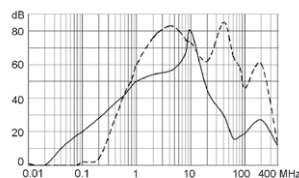
2 A



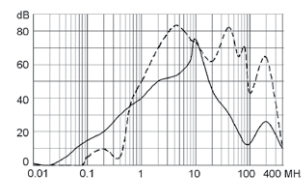
4 A



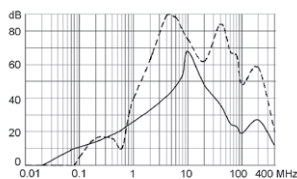
6 A



10 A

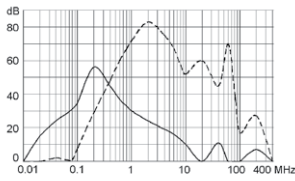


16 A

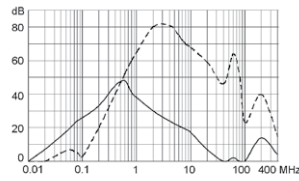


Medical version (M5)

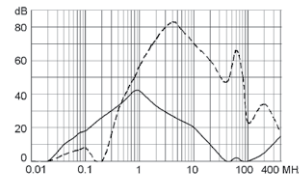
2 A



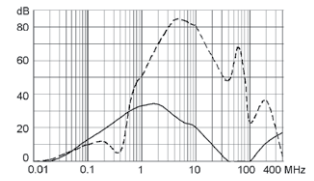
4 A



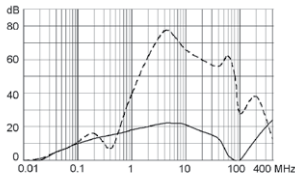
6 A



10 A



16 A



All Variants

Rated Current [A]	Filter-Type	L [mH]	Cx (X2) [nF]	Cy (Y2) [nF]	R [MΩ]	Weight [g]	Housing	Order Number
2	Standard Version	2 x 8	100	4.7	1	114 g	72	5500.2021
4	Standard Version	2 x 3.5	100	4.7	1	114 g	72	5500.2022
6	Standard Version	2 x 1.8	100	4.7	1	115 g	72	5500.2023
10	Standard Version	2 x 0.82	100	4.7	1	115 g	72	5500.2024
16	Standard Version	2 x 0.65	100	4.7	1	115 g	72	5500.2025
2	Medical Version (M5)	2 x 8	100	-	1	114 g	72	5500.2106
4	Medical Version (M5)	2 x 3.5	100	-	1	114 g	72	5500.2107
6	Medical Version (M5)	2 x 1.8	100	-	1	115 g	72	5500.2108
10	Medical Version (M5)	2 x 0.82	100	-	1	115 g	72	5500.2109
16	Medical Version (M5)	2 x 0.65	100	-	1	115 g	72	5500.2110
2	Medical Version (M80)	-	-	-	-	114 g	72	5500.2111
4	Medical Version (M80)	-	-	-	-	114 g	72	5500.2112
6	Medical Version (M80)	-	-	-	-	115 g	72	5500.2113
10	Medical Version (M80)	-	-	-	-	115 g	72	5500.2114
16	Medical Version (M80)	-	-	-	-	115 g	72	5500.2115

Most Popular.

Availability for all products can be searched real-time: <http://www.schurter.com/en/Stock-Check/Stock-Check-SCHURTER>

Packaging unit 10 Pcs