

CHARX PT2C-DC375-7,0MES00P1 - DC charging cable



1538067

<https://www.phoenixcontact.com/gb/products/1538067>

Please be informed that the data shown in this PDF document is generated from our online catalog. Please find the complete data in the user documentation. Our general terms of use for downloads are valid.



CHARX connect professional, CCS type 2, HPC DC charging cable, up to 500 A in Boost mode, 375 A permanent, 1000 V DC, with vehicle charging connector and open cable end, Functional prototype, cable: 7 m, black, straight, supports four-wire measurement technology, with analog temperature sensors, with replaceable mating face frame, with replaceable DC power contacts, with connected PP contact, PHOENIX CONTACT logo, according to IEC 62196-3, for charging electric vehicles (EV) with direct current (DC)

Product description

DC charging cable with vehicle charging connector and free cable end for fast charging of electric vehicles (EV) with direct current (DC) via CCS type 2 vehicle charging inlets, for installation at charging stations for e-mobility (EVSE)

Your advantages

- Complete product range
- The right charging cable for every application, from the carport to the charging park
- Ultra-fast HPC charging with up to 375 kW without liquid cooling
- Robust and durable connector design for maximum availability
- Highest level of safety with two-chamber sealing system for the separation of DC+ and DC-
- Safe against overheating with temperature measurement at every DC power contact
- Prepared for four-wire measurement technology, enabling simple billing compliant with calibration laws
- Fast and cost-effective maintenance with exchangeable mating face including for the power contacts
- Available with your logo on request - for consistent branding of your charging station
- Developed and produced in accordance with the IATF 16949 automotive standard and ISO 9001

Commercial data

Item number	1538067
Packing unit	1 pc
Minimum order quantity	1 pc
Sales key	XWBAAD
Product key	XWBAAD
GTIN	4067923010314
Weight per piece (including packing)	21.62 g
Weight per piece (excluding packing)	2,162 g
Customs tariff number	85444290
Country of origin	PL

CHARX PT2C-DC375-7,0MES00P1 - DC charging cable



1538067

<https://www.phoenixcontact.com/gb/products/1538067>

Technical data

Product properties

Product type	DC charging cable
Product family	CHARX connect professional
Application	for charging electric vehicles (EV) with direct current (DC) for installation at charging stations for electromobility (EVSE)
Type	HPC DC charging cable with vehicle charging connector and open cable end Functional prototype
Design	supports four-wire measurement technology with analog temperature sensors with replaceable mating face frame with replaceable DC power contacts with connected PP contact
Technology	Combined Charging System
Affixed logo	PHOENIX CONTACT logo
Charging standard	CCS type 2
Charging mode	Mode 4

Electrical properties

Type of signal transmission	Pulse width modulation with modulated Powerline communication in accordance with ISO/IEC 15118 / DIN SPEC 70121
Note on the connection method	Crimp connection, cannot be disconnected
Coding	1500 Ω (between PE and PP) PP signal contact connected to cable
Temperature monitoring	2x Pt 1000
Type of charging current	DC
Charging power	375 kW
Charging current	375 A DC
Type of charging current	DC Boost Mode
Charging power	up to 500 kW (Boost Mode, depending on the ambient conditions. For detailed information, see the packing slip in the download area for this item.)
Charging current	up to 500 A DC

Power contact

Number	3 (PE, DC+, DC-)
Rated voltage	1000 V DC
Rated current	375 A (up to 40 °C)

Signal contact

Number	2 (CP, PP)
Rated voltage	30 V AC

CHARX PT2C-DC375-7,0MES00P1 - DC charging cable



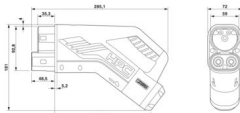
1538067

<https://www.phoenixcontact.com/gb/products/1538067>

Rated current	2 A
Temperature sensors (Pt 1000)	
Sensor type	Pt 1000
Standards/regulations	DIN EN 60751
Attachment point	2 sensors for the DC contacts
Switch-off temperature	90 °C

Dimensions

Vehicle charging connector

Dimensional drawing	
Width	72 mm
Height	181.1 mm
Depth	285.3 mm

Material specifications

Color (Housing)	black (9005)
Color (Handle area)	black (9005)
Color (Mating face)	black (9005)
Color (Cable)	black (9005)
Material (Vehicle charging connector)	Plastic
Material (Cable outer sheath)	TPE-U
Material (Contact surface)	Silver
Flammability rating according to UL 94	V0 (Mating face)

Cable/line

Cable length	7 m ±50 mm
Wiring standards/regulations	IEC 62893-4-1
Cable weight	3360.00 kg/km
Cable type	Class 6
Cable type	straight
Cable structure	4 x 50 mm ² + 1 x 25 mm ² + 2 x 0.75 mm ² + 6 x 0.5 mm ²
External cable diameter	38.00 mm
Stripping length of the sheath	180 mm ±10 mm
Stripping length	180 mm ±10 mm
Cable resistance	≤ 0.000355 Ω/m
Bending radius	380 mm ±1 mm (10 x D)

Mechanical properties

Mechanical data

CHARX PT2C-DC375-7,0MES00P1 - DC charging cable



1538067

<https://www.phoenixcontact.com/gb/products/1538067>

Insertion/withdrawal cycles	> 10000
Insertion force	< 100 N
Withdrawal force	< 100 N

Environmental and real-life conditions

Ambient conditions

Degree of protection (Vehicle charging connector)	IP54 (plugged in; when plugged in and ready to operate, the degree of protection is only ensued if both plug-in components are original products from Phoenix Contact or suitable standard-compliant products)
Ambient temperature (operation)	-30 °C ... 40 °C max. 55 °C (Current reduction required, observe the DC contact temperature limit value of 90°C)
Ambient temperature (storage/transport)	-40 °C ... 80 °C
Altitude	max. 5000 m (above sea level)

Standards and regulations

Standards

Standards/regulations	according to IEC 62196-3
-----------------------	--------------------------

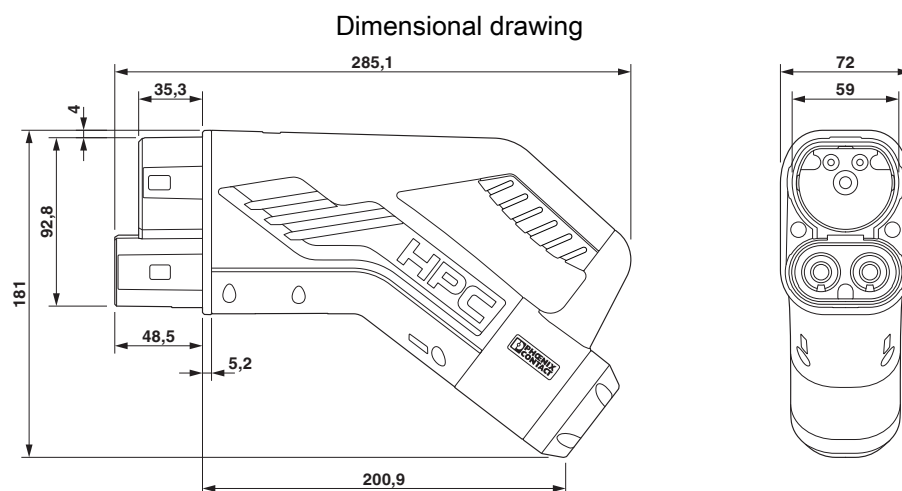
CHARX PT2C-DC375-7,0MES00P1 - DC charging cable



1538067

<https://www.phoenixcontact.com/gb/products/1538067>

Drawings

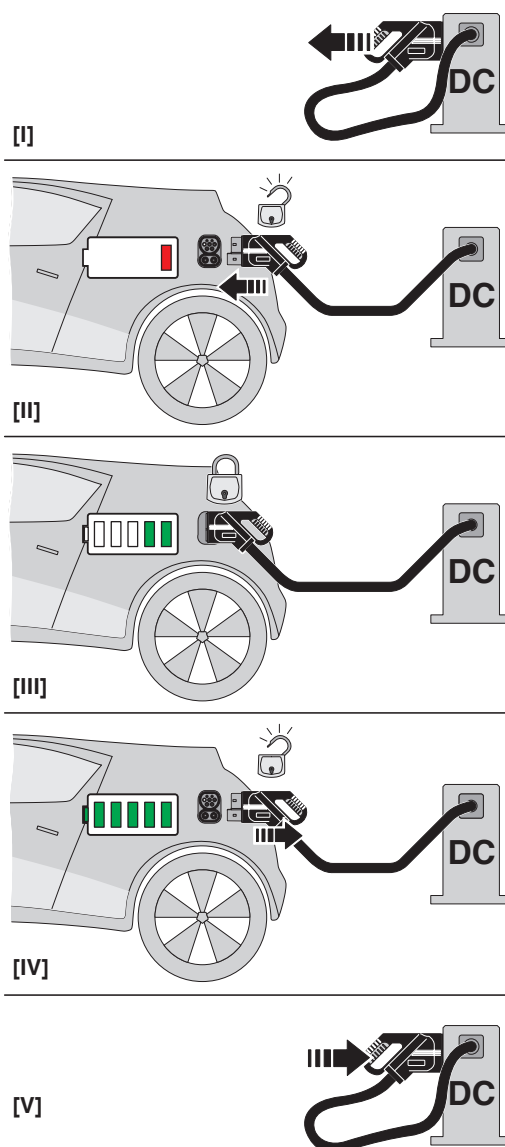


CHARX PT2C-DC375-7,0MES00P1 - DC charging cable

1538067

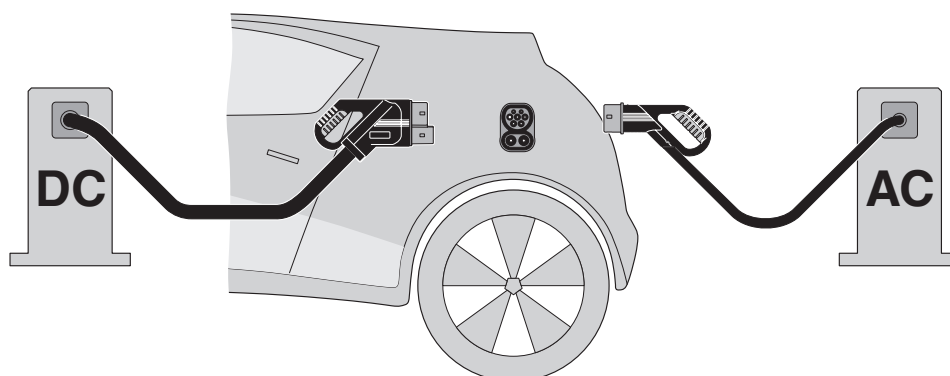
<https://www.phoenixcontact.com/gb/products/1538067>

Schematic diagram



Operating instructions

Schematic diagram



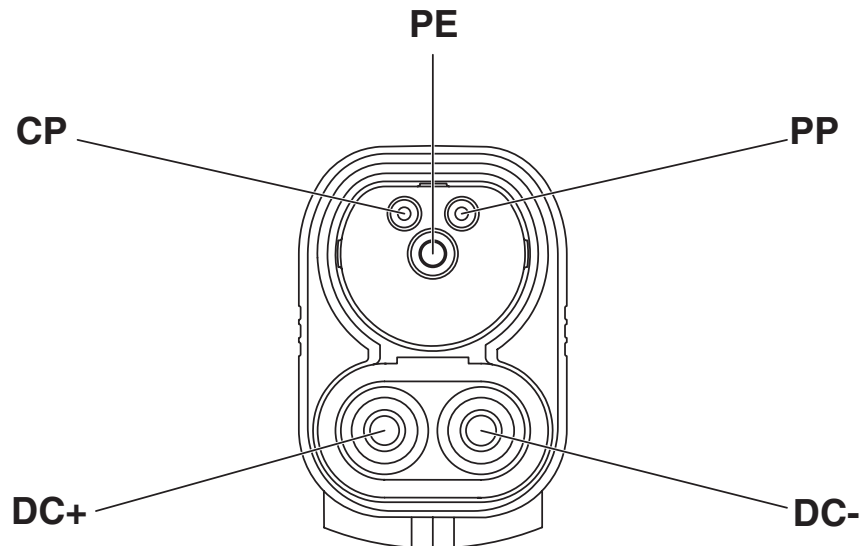
The Combined Charging System (CCS) principle - standard-compliant charging system for electric vehicles, which supports both conventional AC charging and fast DC charging. Both Vehicle Connectors fit into the CCS Vehicle Inlet.

CHARX PT2C-DC375-7,0MES00P1 - DC charging cable

1538067

<https://www.phoenixcontact.com/gb/products/1538067>

Schematic diagram



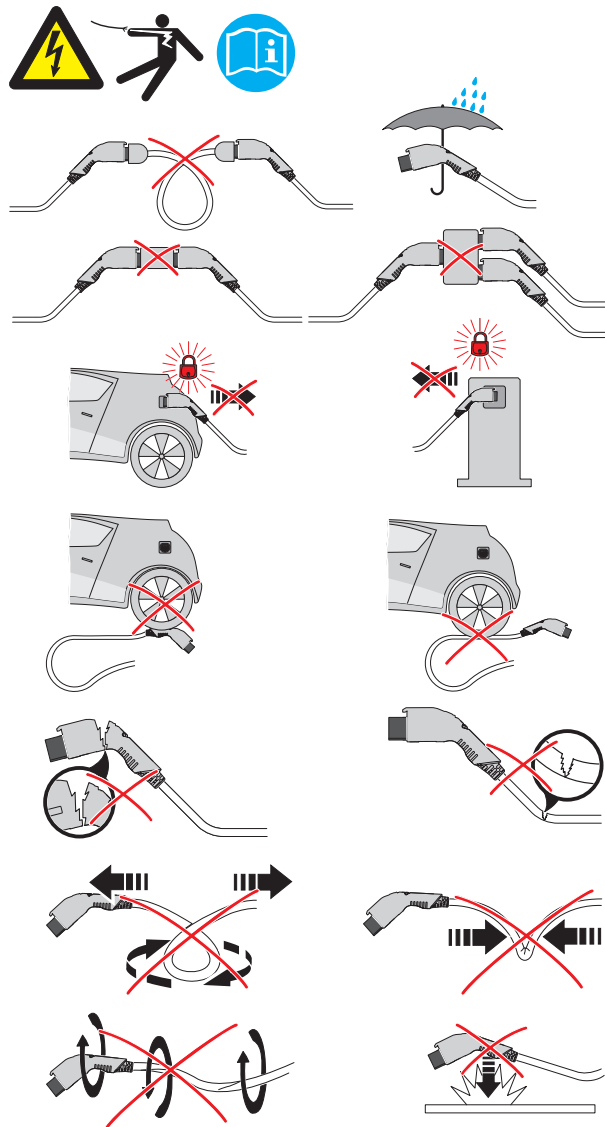
Pin assignment of the Vehicle Connector

CHARX PT2C-DC375-7,0MES00P1 - DC charging cable

1538067

<https://www.phoenixcontact.com/gb/products/1538067>

Schematic diagram



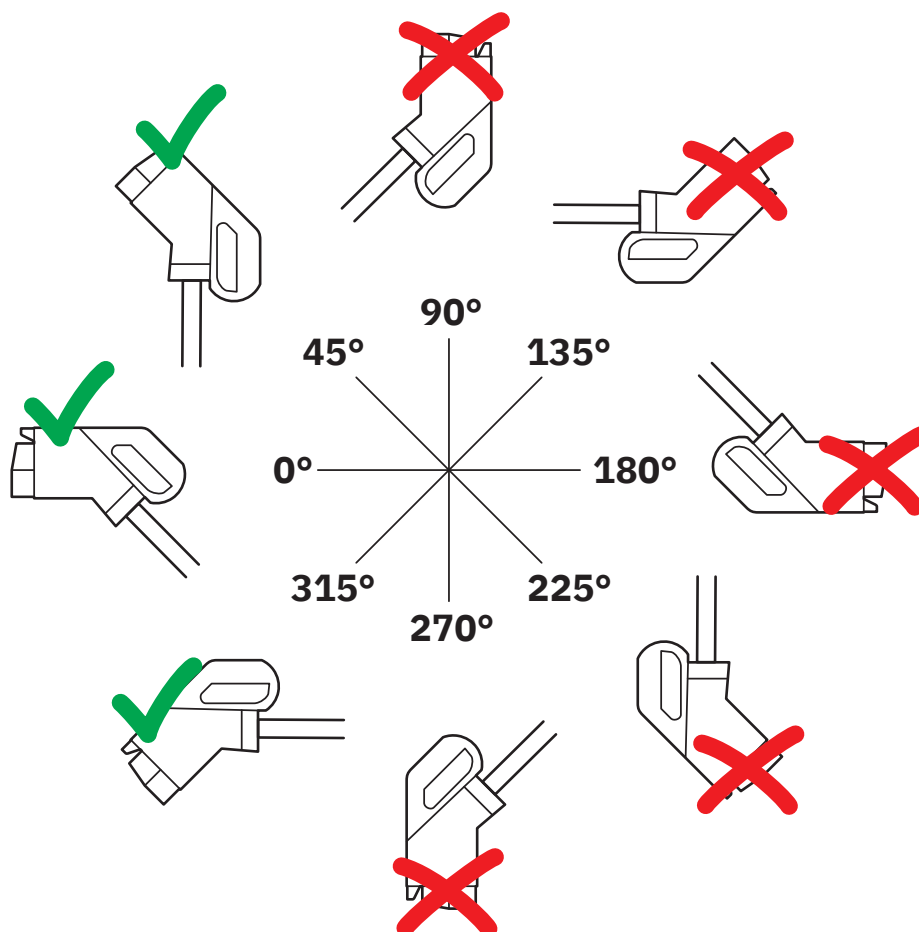
Warnings regarding use

CHARX PT2C-DC375-7,0MES00P1 - DC charging cable

1538067

<https://www.phoenixcontact.com/gb/products/1538067>

Schematic diagram



The resting position must be installed in the charging station such that the user cannot hang up the vehicle connector upside down (90° to 270°). However, positions rotated upward (45°) or downward (315°) are options for a resting position.


CHARX PT2C-DC375-7,0MES00P1 - DC charging cable



1538067
<https://www.phoenixcontact.com/gb/products/1538067>

Approvals

To download certificates, visit the product detail page: <https://www.phoenixcontact.com/gb/products/1538067>

	IECEE CB Scheme Approval ID: JPTUV-161991			
	Nominal voltage U _N	Nominal current I _N	Cross section AWG	Cross section mm ²
	1000 V	375 A	-	-

CHARX PT2C-DC375-7,0MES00P1 - DC charging cable



1538067
<https://www.phoenixcontact.com/gb/products/1538067>

Classifications

ECLASS

ECLASS-13.0	27144705
-------------	----------

ETIM

ETIM 9.0	EC002897
----------	----------

CHARX PT2C-DC375-7,0MES00P1 - DC charging cable



1538067

<https://www.phoenixcontact.com/gb/products/1538067>

Environmental product compliance

EU RoHS

Fulfills EU RoHS substance requirements	Yes, No exemptions
---	--------------------

China RoHS

Environment friendly use period (EFUP)	EFUP-10
	An article-related China RoHS declaration table can be found in the download area for the respective article under "Manufacturer declaration". For all articles with EFUP-E, no China RoHS declaration table issued and required.

EU REACH SVHC

REACH candidate substance (CAS No.)	Dodecamethylcyclhexasiloxane(CAS: 540-97-6)
SCIP	a40fd75e-be3a-4745-9818-eb2257f824e3

Phoenix Contact 2025 © - all rights reserved

<https://www.phoenixcontact.com>

PHOENIX CONTACT Ltd
Halesfield 13, Telford
Shropshire, TF7 4PG
01952 681700
info@phoenixcontact.co.uk