



AC coil operating

AC operating voltage

of 50/60Hz coil powered at 50Hz
pick-up

min	%Us	≤80 Us min
max	%Us	≤110 Us max

drop-out

max	%Us	≤75 Us min
-----	-----	------------

of 50/60Hz coil powered at 60Hz
pick-up

min	%Us	≤85 Us min
max	%Us	≤110 Us max

drop-out

max	%Us	≤75 Us min
-----	-----	------------

of 60Hz coil powered at 60Hz
pick-up

min	%Us	≤85 Us min
max	%Us	110

drop-out

min	%Us	20
max	%Us	55

DC coil operating

DC operating voltage

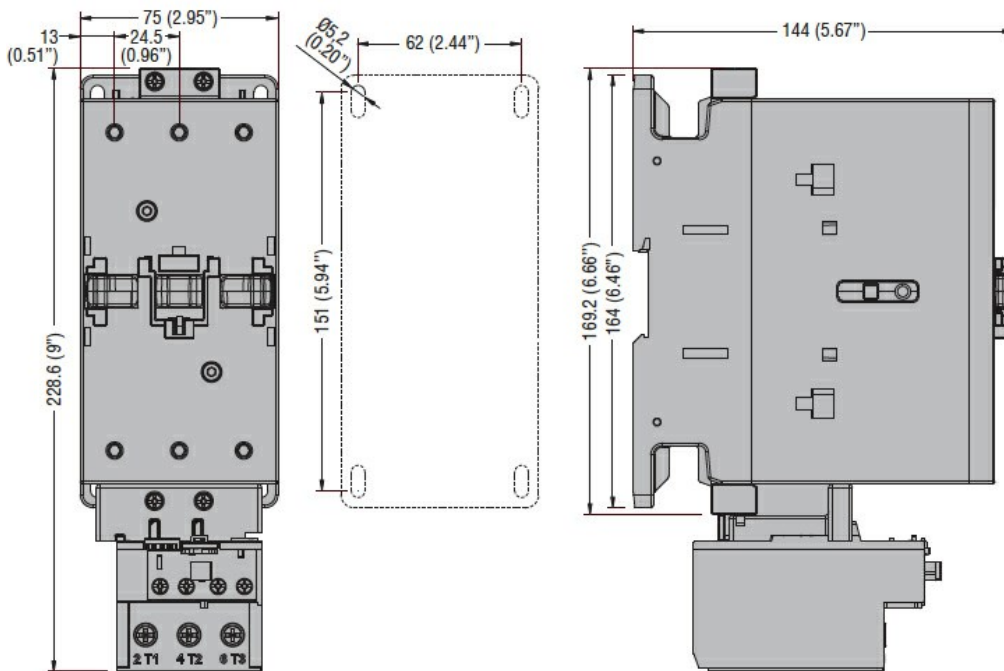
pick-up

min	%Us	≤80 Us min
max	%Us	≤110 Us max

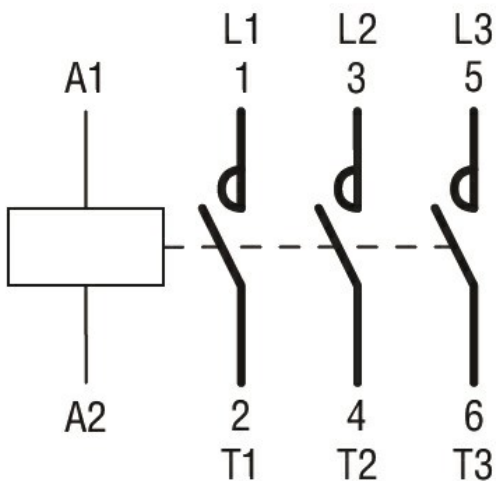
drop-out

max	%Us	≤70 Us min
-----	-----	------------

Dimensions



Wiring diagrams



Certifications and compliance

Compliance

CSA C22.2 n° 60947-1
CSA C22.2 n° 60947-4-1
IEC/EN 60947-1
IEC/EN 60947-4-1
UL 60947-1
UL 60947-4-1

Certifications

CCC
cULus

ETIM 6 classification

EC000066 - Power contactor, AC switching