



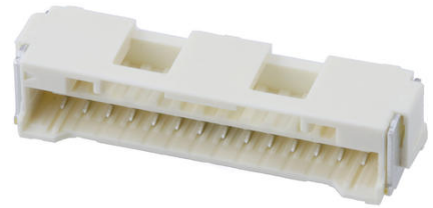
**Part Number :** [5025841470](#)

**Product Description :** 1.50mm Pitch, CLIK-Mate PCB Receptacle, Single Row, Surface Mount, Vertical, Tin Plating, Positive Lock, 14 Circuits, Beige

**Series Number :** 502584

**Status :** Active

**Product Category :** PCB Headers and Receptacles



---

## Documents & Resources

### Drawings

[5025841470\\_sd.pdf](#)

### 3D Models and Design Files

[STEP AP242](#)

[SOLIDWORKS](#)

[Creo](#)

[Symbol and Footprint \(Multi-Format\)](#)

[5025841470.dxf](#)

### Specifications

[AS-502578-001-001.pdf](#)


[SPK-502584-001-001.pdf](#)

[5025781000-PS-000.pdf](#)

---

## Product Environment Compliance

### Compliance

|                    |  |
|--------------------|--|
| GADSL/IMDS         | Compliant with Exemption 44; 34; 33  |
| China RoHS         | <br>per SJ/T 11365-2006 |
| EU ELV             | Not Relevant   |
| Low-Halogen Status | Not Low-Halogen per IEC 61249-2-21   |
| REACH SVHC         | Not Contained per D(2025)4165-DC (25 June 2025)  |

|         |                           |
|---------|---------------------------|
| EU RoHS | Compliant per EU 2015/863 |
|---------|---------------------------|

### Compliance Statements

- EU RoHS
- REACH SVHC
- Low-Halogen

### Industry Documents

- IPC 1752A Class C
- IPC 1752A Class D
- Molex Product Compliance Declaration
- IEC-62474
- chemSHERPA (xml)

### Substances of Interest

- PFAS

### EU RoHS Certificate of Compliance

### Additional Product Compliance Information

## Part Details

### General

|                |   |
|----------------|---|
| Status         | Active  |
| Category       | PCB Headers and Receptacles   |
| Series         | 502584  |
| Description    | 1.50mm Pitch, CLIK-Mate PCB Receptacle, Single Row, Surface Mount, Vertical, Tin Plating, Positive Lock, 14 Circuits, Beige |
| Application    | Signal, Wire-to-Board   |
| Component Type | PCB Receptacle  |
| Product Name   | CLIK-Mate   |
| UPC            | 800756644561  |

### Agency

|    |        |
|----|--------|
| UL | E29179 |
|----|--------|

### Electrical

|                               |      |
|-------------------------------|------|
| Current - Maximum per Contact | 2.0A |
| Voltage - Maximum             | 100V |

## Physical

|                                |                       |
|--------------------------------|-----------------------|
| Circuits (Loaded)              | 14                    |
| Circuits (maximum)             | 14                    |
| Color - Resin                  | Beige                 |
| Durability (mating cycles max) | 30                    |
| First Mate / Last Break        | No                    |
| Glow-Wire Capable              | No                    |
| Guide to Mating Part           | No                    |
| Keying to Mating Part          | None                  |
| Lock to Mating Part            | Yes                   |
| Mated Height                   | 9.70mm                |
| Material - Metal               | Copper Alloy          |
| Material - Plating Mating      | Tin                   |
| Material - Plating Termination | Tin                   |
| Net Weight                     | 990.601/mg            |
| Number of Rows                 | 1                     |
| Orientation                    | Vertical              |
| Packaging Type                 | Embossed Tape on Reel |
| PCB Locator                    | No                    |
| PCB Retention                  | Yes                   |
| Pitch - Mating Interface       | 1.50mm                |
| Pitch - Termination Interface  | 1.50mm                |
| Plating min - Termination      | 1.000µm               |
| Polarized to Mating Part       | Yes                   |
| Polarized to PCB               | No                    |
| Robotic Placement              | Vacuum Pick-Up Area   |
| Stackable                      | No                    |
| Temperature Range - Operating  | -40° to +105°C        |
| Termination Interface Style    | Surface Mount         |

---

## Mates With / Use With

### Mates with Part(s)

| Description                   | Part Number   |
|-------------------------------|---------------|
| 1.50mm Pitch CLIK-Mate Single | <u>502578</u> |

|                   |  |
|-------------------|--|
| Row Plug Housings |  |
|-------------------|--|

---

This document was generated on Sep 23, 2025