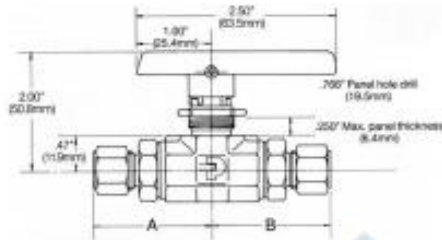


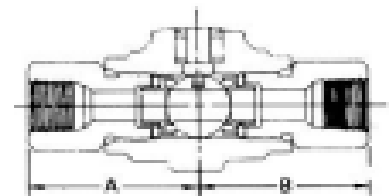
2-Way Ball Valves

B6 Series



Water and air flow for Cv = 1.12					
Pressure drop across valve (ΔP)		Air flow at 20°C (70°F) outlet to atmosphere		Water flow at 20°C (70°F)	
PSI	Bar	SCFM	Std. cc/sec.	GPM	Litre/Min.
10	0.7	19.3	9 100	3.54	16.77
50	3.4	54.7	25 800	7.52	37.47
100	6.9	97.0	45 775	13.16	53.00

Port connections Identical ends inlet and outlet	Part number	Orifice		Cv	A		B		
		in	mm		in	mm	in	mm	
1/8 Tube A-lok	2A-B6LJ2*	.093	2.36	.13	1.66	42.2	1.66	42.2	
1/4 Tube A-lok	4A-B6LJ2*	.187	4.75	.64	1.75	44.5	1.75	44.5	
6mm Tube A-lok†	M6A-B6LJ2*	.187	4.75	.64	1.75	44.5	1.75	44.5	
3/8 Tube A-lok	6A-B6LJ2*	.250	6.35	1.12	1.84	46.7	1.84	46.7	
8mm Tube A-lok†	M8A-B6LJ2*	.250	6.35	1.12	1.75	44.5	1.75	44.5	
1/4 OD Vacuum integral male†	4V-B6LJ2*	.187	4.75	.64	1.75	44.5	1.75	44.5	
1/4 OD ABW†	4Y-B6LJ2*	.172	4.37	.48	1.78	45.2	1.78	45.2	
10mm Tube A-lok	M10A-B6LJ2*	.250	6.35	1.12	1.78	45.2	1.78	45.2	
1/4 OD Ultraseal integral male†	4Q-B6LJ2*	.180	4.57	.52	1.51	28.3	1.51	38.3	
1/4 Female NPT	4F-B6LJ2*	.250	6.35	1.12	1.51	38.4	1.51	38.4	
1/4 Male NPT	4M-B6LJ2*	.250	6.35	1.12	1.62	41.2	1.62	41.2	
3/8 Male NPT	6MB6LJ2*	.250	6.35	1.12	1.62	41.2	1.62	41.2	
3/8 OD ABW†	6Y-B6LJ2*	.250	6.35	1.12	1.81	46.0	1.81	46.0	
3/8 OD Ultraseal integral male†	6Q-B6LJ2*	.250	6.35	1.12	1.51	38.3	1.51	38.3	
1/2 OD ABW†	8Y-B6LJ2*	.250	6.35	1.12	1.95	49.5	1.95	49.5	
Combination ends									
inlet	outlet								
1/4 Male NPT	1/4 Tube A-lok	4M4A-B6LJ2*	.187	4.75	.64	1.62	41.2	1.75	44.5
1/4 Male NPT	1/4 Female NPT	4M4F-B6LJ2*	.250	6.35	1.12	1.62	41.2	1.51	38.4
1/4 Male NPT	3/8 Tube A-lok	4M6A-B6LJ2*	.250	6.35	1.12	1.62	41.2	1.84	46.7
1/4 Female NPT	1/4 Tube A-lok	4F4A-B6LJ2*	.250	6.35	1.12	1.51	38.4	1.75	44.5
1/4 Female NPT	3/8 Tube A-lok	4F6A-B6LJ2*	.250	6.35	1.12	1.51	38.4	1.84	46.7



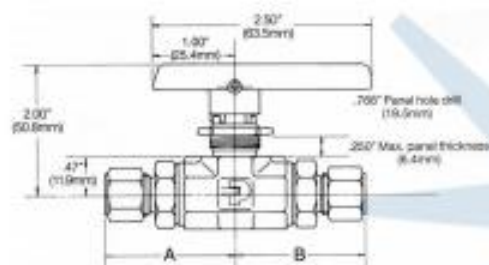
For CPI single ferrule ended valves replace A in part number with Z.

*Materials : suffix part number with SS-stainless steel, B-brass, M-monel, HC-hastelloy.

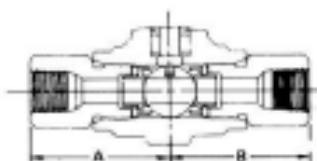
†Available in stainless steel only.

2-Way Ball Valves

B8 Series



Water and air flow for Cv = 3.0					
Pressure drop across valve (ΔP)		Air flow at 20°C (70°F) outlet to atmosphere		Water flow at 20°C (70°F)	
PSI	MPa	SCFM	Std. cc/sec.	GPM	Litre/Min.
10	0.7	52.4	24 730	9.6	45.42
50	3.4	148.6	70 132	21.5	101.74
100	6.9	263.3	124 264	30.4	143.83



Port connections Identical ends inlet and outlet	Part number	Orifice		Cv	A		B	
		in	mm		in	mm	in	mm
1/2 OD ABW†	8Y-B8LJ2*	.325	8.26	2.1	2.36	59.9	2.36	59.9
3/8 Female NPT	6F-B8LJ2*	.406	10.31	3.0	1.93	49.0	1.93	49.0
1/2 Female NPT	8F-B8LJ2*	.406	10.31	3.0	2.16	54.9	2.16	54.9
1/2 OD Ultraseal integral male†	8Q-B8LJ2*	.312	7.92	2.0	1.93	49.0	1.93	49.0
1/2 Tube A-lok	8A-B8LJ2*	.406	10.31	3.0	2.38	60.4	2.38	60.4
12mm Tube A-lok †	M12A-B8LJ2*	.406	10.31	3.0	2.34	59.4	2.34	59.4
16mm Tube A-lok †	M16A-B8LJ2*	.406	10.31	3.0	2.34	59.4	2.34	59.4
3/4 Tube A-lok	12A-B8LJ2*	.406	10.31	3.0	2.36	59.9	2.36	59.9

For CPI single ferrule ended valves replace A in part number with Z.

*Materials : suffix part number with SS-stainless steel, B-brass, M-monel, HC-hastelloy.

†Available in stainless steel only.