

Features

- Silver plated
- 2 Claw Support
- Male
- 10A

RS PRO Heavy Duty Connector Contacts

RS Stock No.:

0180194



RS PRO is the own brand of RS. The RS PRO Seal of Approval is your assurance of professional quality, a guarantee that every part is rigorously tested, inspected, and audited against demanding standards. Making RS PRO the Smart Choice for our customers.

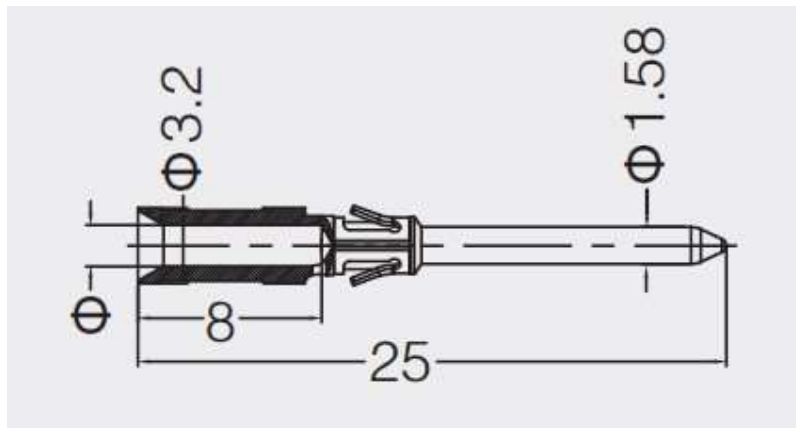
Product Description

Buy this product from www.rspro.com

The RS Pro Heavy-Duty Connector series is a full range of heavy-duty inserts, housings, crimps and accessories. These crimps have two claws for extra support and are compatible with the RS Pro range of heavy-duty inserts. These connectors have been designed for situations where they will encounter harsh environments. This makes them ideal for food & beverage manufacturing, packaging machines, conveyor belt systems, railway, oil & gas processing and other industrial automation

General Specifications

Material	Silver Plated
Connector type	Crimp
Gender	Male
Current Rating	10A
Contact Resistance	$\leq 3\text{m}\Omega$
For use with	RS-HD, RS-HDD, RS-HM, RS-HK, RS-HQ inserts



Wire Gauge	Φ	Stripping length
1.0 mm ²	1.45	8 mm