

Features

- Manufactured to interchange with products produced to MIL-C-27487F
- Lightweight
- Leak free
- Easy to connect and disconnect

RS PRO Camlock Adaptor Blanking Plug Type DP



RS PRO is the own brand of RS. The RS PRO Seal of Approval is your assurance of professional quality, a guarantee that every part is rigorously tested, inspected, and audited against demanding standards. Making RS PRO the Smart Choice for our customers.

Product Description

- *Easy to use design*
- *Offshore, onshore, marine, Building sites, industrial and Agriculture applications*
- *Transfer of wet and dry materials*
- *Cost effective*
- *Good chemical resistance*

General Specifications

Hose Connector Type	Blanking Plug Type DP
Connector Type	Camlock Adaptor

Mechanical Specifications

Hose Inner Diameter	See table below
Thread Size	See table below
Body Material	See table below
Connector Gender	See table below
Valved	No
Maximum Working Pressure	See table below
Seal material	NA

Approvals

Declarations	MFR Declaration of Conformity
--------------	-------------------------------

RS PRO Blanking Plug Type DP – Technical Info

Stock No.	Size	Part No (Dimensions ref.) See table next	Material	Working pressure Bar	Pack Size
3626863	2"	200	Aluminium	10	1
0303739	1"	100	Polypropylene	7	2
0303741	1 1/2"	150	Polypropylene	7	2
0303742	2"	200	Polypropylene	7	2
307364	1"	100	Stainless Steel	17.2	1
307386	2"	200	Stainless Steel	17.2	1

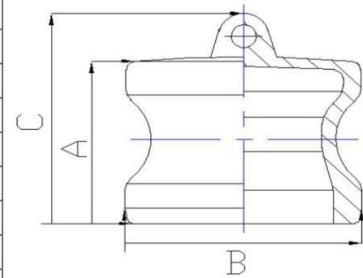
RS PRO Blanking Plug Type DP – Dimensions



Unit: mm

Part No	A	B	C
050	27.5	24.4	35.5
075	26	32.1	38
100	34.8	36.6	52.3
125	40	45.4	57.5
150	41	53.4	57
200	46	63	63.5
250	50	75.7	67.5
300	50	91.4	67.5
400	50.8	119.5	69.8
500	53	145.2	78
600	61.3	175.8	89.3

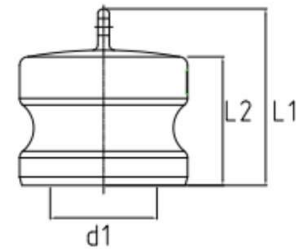
Aluminium



Unit: mm

Part No	d1	L1	L2
050	14	39	28
075	21	41	30
100	23	49	34
125	29	58	43
150	35	60	46
200	44	65	49
250	59	67	51
300	73	69	52
400	93	73	57

Polypropylene



Unit: mm

Part No	A	B	C
050	27.5	24.4	35.5
075	26	32	38
100	34.8	36.6	52.3
125	40	45.4	57.5
150	41	53.4	57
200	56	63	63.5
250	50	75.7	67.5
300	50	91.4	67.5
400	50.8	119.5	69.8
500	53	145.2	78
600	61.3	175.8	89.3

Stainless Steel

