

# Customer Information Sheet

DRAWING No.: M40-600XXXX

SHEET 2 OF 2

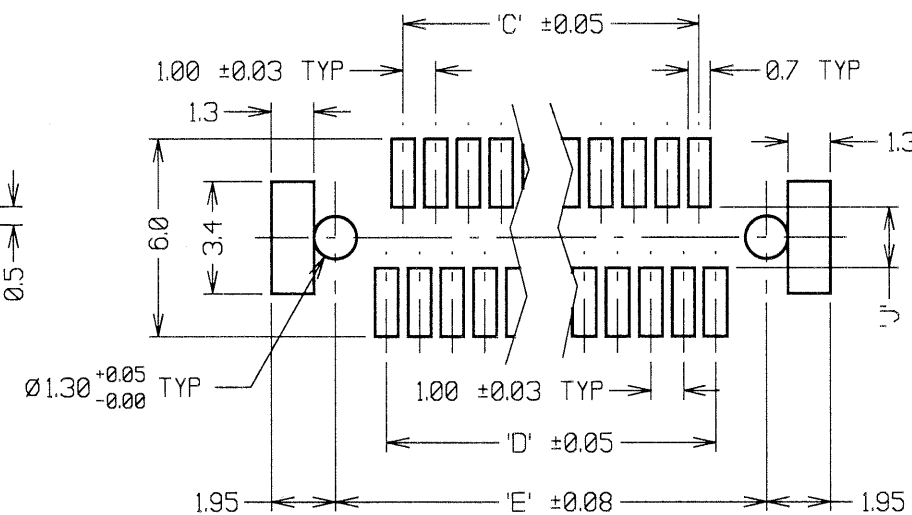
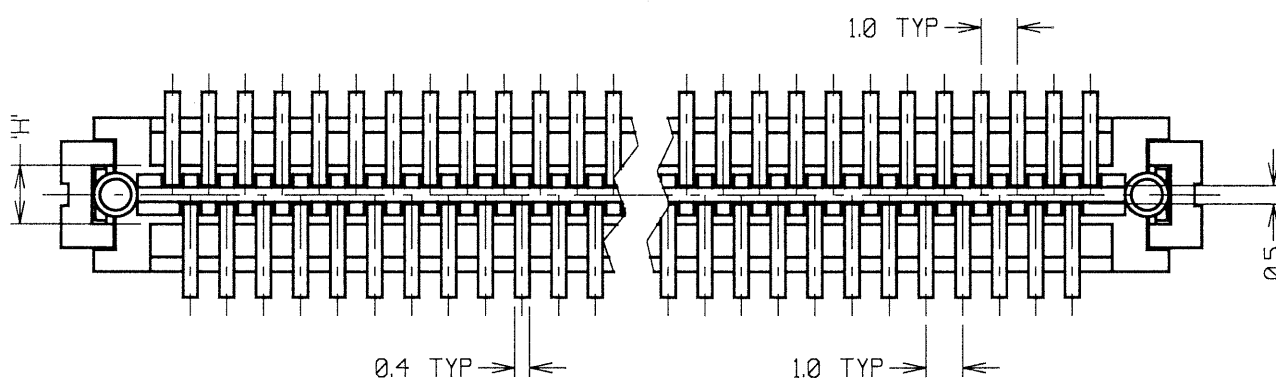
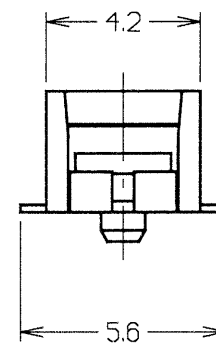
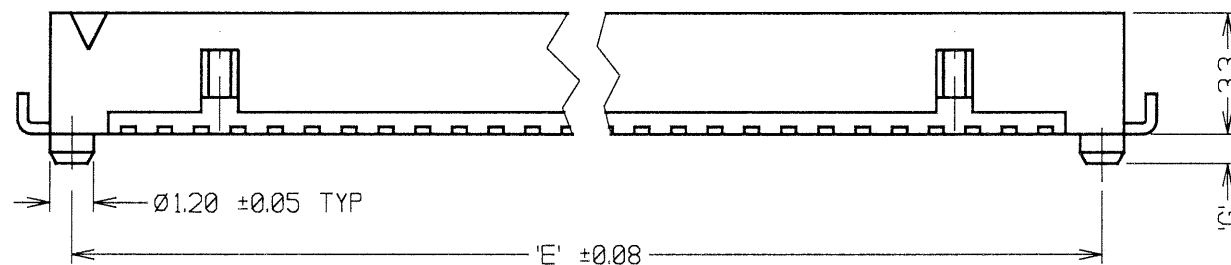
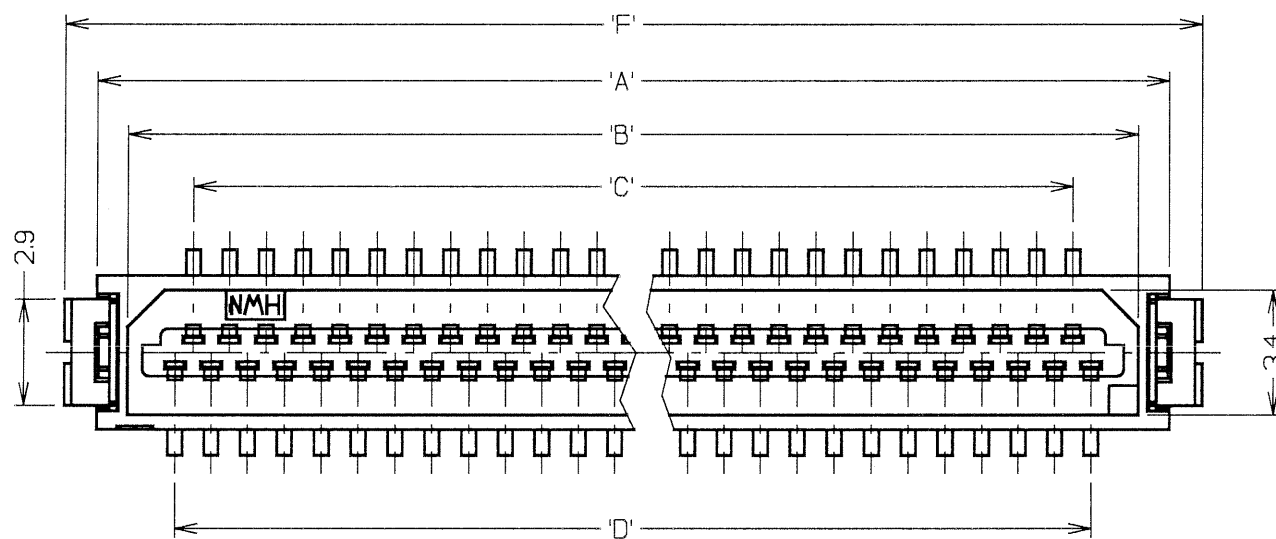
IF IN DOUBT - ASK

©

NOT TO SCALE

THIRD ANGLE PROJECTION

ALL DIMENSIONS IN mm



PART No.	No. OF CONTACTS	'A'	'B'	'C'	'D'	'E'	'F'	'G'	'H'	'J'
M40-60009XX	9	8.3	6.6	3.0	4.0	7.1	10.1	1.0	1.7	1.84 <sup>+0.10</sup> <sub>-0.00</sub>
M40-60015XX	15	11.3	9.6	6.0	7.0	10.1	13.1	1.0	1.7	1.84 <sup>+0.10</sup> <sub>-0.00</sub>
M40-60021XX	21	14.3	12.6	9.0	10.0	13.1	16.1	1.0	1.7	1.84 <sup>+0.10</sup> <sub>-0.00</sub>
M40-60025XX	25	16.3	14.6	11.0	12.0	15.1	18.1	1.0	1.7	1.84 <sup>+0.10</sup> <sub>-0.00</sub>
M40-60031XX	31	19.3	17.6	14.0	15.0	18.1	21.1	0.8	2.6	3.0 <sup>+0.00</sup> <sub>-0.10</sub>
M40-60041XX	41	24.3	22.6	19.0	20.0	23.1	26.1	0.8	2.6	3.0 <sup>+0.00</sup> <sub>-0.10</sub>
M40-60051XX	51	29.3	27.6	24.0	25.0	28.1	31.1	0.8	2.6	3.0 <sup>+0.00</sup> <sub>-0.10</sub>

**SPECIFICATIONS:**

**MATERIAL:**

MOULDING = PA UL94V-0 (NATURAL)

CONTACTS = PHOSPHOR BRONZE

RETAINER = BRASS

**FINISH:**

CONTACTS = 1-2μ 100% REFLOW TIN

RETAINER = 2-6μ 100% MATTE TIN OVER 1.27μ MIN NICKEL

**ELECTRICAL:**

CURRENT RATING = 0.5 AMPS

VOLTAGE RATING = 100V AC

DIELECTRIC STRENGTH = 250V AC FOR 1 MINUTE

INSULATION RESISTANCE = 500 MEGOHMS MIN (100V DC)

CONTACT RESISTANCE = 50 MILLIOHMS MAX (0.1A DC)

**MECHANICAL:**

DURABILITY = 30 CYCLES

**ENVIRONMENTAL:**

TEMPERATURE RANGE = -55°C TO +85°C

**PACKING:**

TUBE

ORDER CODE:

**M40-600XX46**

No. OF CONTACTS  
9, 15, 21, 25, 31,  
41, 51

FINISH:  
46 = 100% TIN

**NOTES:**

- MATES WITH M40-620XXXX TO GIVE 4.3mm BOARD-TO-BOARD HEIGHT.
- ALL TOLERANCES ±0.30 UNLESS OTHERWISE STATED.

**HARWIN**

HARWIN USA  
TEL: 603 893 5376  
FAX: 603 893 5396  
mis@harwin.com

HARWIN Europe (UK)  
TEL: 023 9231 4545  
FAX: 023 9231 4590  
mis@harwin.co.uk

HARWIN Asia  
TEL: +65 6 779 4909  
FAX: +65 6 779 3868  
mis@harwin.com.sg

THIS DRAWING AND ANY INFORMATION OR DESCRIPTIVE MATTER SET OUT HEREON ARE CONFIDENTIAL AND COPYRIGHT PROPERTY OF THE HARWIN GROUP AND MUST NOT BE DISCLOSED, LOANED, COPIED OR USED FOR MANUFACTURING, TENDERING OR FOR ANY OTHER PURPOSE WITHOUT THEIR WRITTEN PERMISSION.

**TOLERANCES**  
X. = ±1mm  
X.X = ±0.25mm  
X.XX = ±0.10mm  
X.XXX = ±0.01mm  
ANGLES = 5°  
UNLESS STATED

**MATERIAL:**  
SEE ABOVE  
**FINISH:** SEE ABOVE  
**S/AREA:** mm²

**TITLE:**  
100mm PITCH SMT  
PLUG CONNECTOR

**DRAWING NUMBER:**  
M40-600XXXX

JMB 8 22.06.06 9282

NAME ISS. DATE C/NOTE

APPROVED: *JMB*

CHECKED: *WJB*

DRAWN: W. J. BOURNE

CUSTOMER REF.:

ASSEMBLY DRG:

SHT  
2  
OF  
2