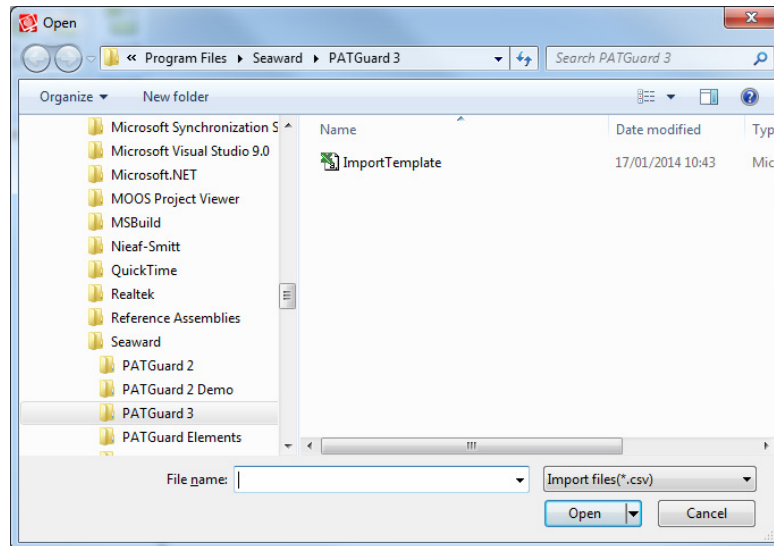


# Importing data from PT250+ into PATGuard 3

Test data can be downloaded from the PT250+ tester into the free datalogger software and then saved as a CSV file. This guide will tell you how to import this data into PATGuard 3.

## In PATGuard 3

- 1) Open up the database you wish to import the data into or create a new database.
- 2) In the Data Transfer tab select Import.
- 3) Navigate to the .csv file that was downloaded from the PT250+ and select Open.



- 4) The data will now be downloaded into your PATGuard 3 database so you can set up Site or Location names.