



FumeCube

What to specify...

1. Single or Dual Arm System

2. Voltage


3. Pre-filter

4. Main filter

6. Interfacing Kit


1	2	Single Arm System		Dual Arm System	
Voltage	230V ±10%	120V ±10%	230V ±10%	120V ±10%	
Vacuum Control	072066	072067	072065	072068	
Wattage	0.14 kW	0.107 kW	0.14 kW	0.107 kW	
Frequency	50Hz / 60 Hz	50Hz / 60 Hz	50Hz / 60 Hz	50Hz / 60 Hz	
Cabinet height	366 mm	366 mm	366 mm	366 mm	
Cabinet width (not inc hose)	308 mm	308 mm	308 mm	308 mm	
Cabinet depth (not inc hose)	294 mm	294 mm	294 mm	294 mm	
Cabinet weight (inc filters)	17 Kg	17 Kg	17 Kg	17 Kg	
Construction	Precision engineered brushed stainless steel units. High performance continuous run brushless motors. Quick and simple to relocate.				

3 Pre-filter Pad



<i>Options:</i>	<i>Code:</i>
F5 Pack of 4 (std)	200225
F6 Pack of 4	200226
F8/F9 Pack of 4	200316

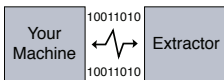
4 Main filter



<i>Options:</i>	<i>Code:</i>	<i>Options:</i>	<i>Code:</i>
HEPA/Chemical (std)	110536	Solvent Lock	110543
Chemical	110537	<i>* Use in combination with 200316</i>	
Chemical Special	110544	Note: FumeCubes sold prior to December 2008 may require different filters. Please contact your local distributor for advice.	
HEPA/Chemical Cleanroom*	110538		



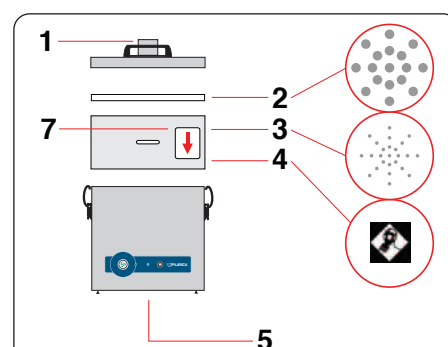
6 Machine Interfacing (Optional)



Allows the Purex system to interface with a piece of equipment connected to it.

- Start/Stop Control:** Extraction unit starts/stops when a connected piece of equipment is switched ON/OFF.
- Filter Blocked Warning:** A signal is sent to a connected piece of equipment to trigger an alert or to shut it down.
- Remote ON/OFF Switch:** 5M cable & switch

See PAGE 34



Single arm system supplied with:

- 1 x Filter + pre-filter pad
- 1 x 51mm x 2m flexible hose [black]
- 2 x Connecting cuffs [black]
- 1 x Clamped bracket
- 1 x 38mm stainless steel flexible arm and valve
- 1 x 38mm pen nib nozzle & 1 x conical cowl.



Dual arm system supplied with:

- 1 x Filter + pre-filter pad
- 2 x 51mm x 2m flexible hose [black]
- 4 x Connecting cuffs [black]
- 2 x Clamped bracket
- 2 x 38mm stainless steel flexible arm and valve
- 2 x 38mm pen nib nozzle and 2 x conical cowl.

Legend:

- 1) Air inlet - 57mm ID - 62mm OD
- 2) Pre-filter.
- 3) Main Filter (HEPA location).
- 4) Main Filter (Carbon location).
- 5) Clean air returned to workplace.
- 7) Filter identification label.

In cleanroom filters, positions 3&4 are reversed.

Controls

Visual and Audible Filter Blocked Warning

Alerts the operator when a filter starts to block so that a replacement filter can be acquired and downtime can be avoided.

LED Filter Status

Green = Filter OK
Yellow = Filter nearly full
Red = Filter full, replacement required

Interface with other equipment e.g. a laser optional.

System Features...

- Automatic electronic flow control - maintains a constant extraction rate even as the filter blocks
- Adjustable airflow
- VariColour filter blocked warning system
- Low capital and running costs
- Quick change pre-filters deliver longer filter life
- Submicronic (HEPA) filtration removes 99.997% of particles down to 0.3 microns
- Activated carbon filtration removes harmful gas
- Simple to install and quiet in operation
- Easy to relocate
- Precision made from stainless steel

Includes:

- 1 x Main filter
- 4 x Pre-filter pad
- 1 or 2 Arm Kit
- 1 x Power cable

Accessories

Please see the accessories section at the back of this brochure.