



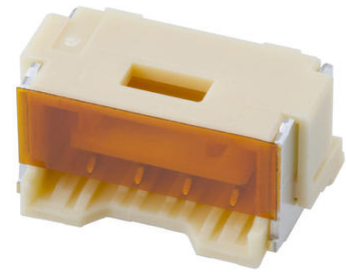
Part Number : [5024430460](#)

Product Description : 2.00mm Pitch CLIK-Mate Wire-to-Board PCB Receptacle, Single Row, Vertical, with Cover Tape, 4 Circuits

Series Number : 502443

Status : Active

Product Category : PCB Headers and Receptacles



Documents & Resources

Drawings

[5024430460_sd.pdf](#)

3D Models and Design Files


[5024430460_stp.zip](#)

Specifications

[5024431570-000.pdf](#)

Product Environment Compliance

Compliance

| | |
|--------------------|--|
| GADSL/IMDS | Compliant with Exemption 44; 33 |
| China RoHS |  per SJ/T 11365-2006 |
| EU ELV | Not Relevant |
| Low-Halogen Status | Not Low-Halogen per IEC 61249-2-21 |
| REACH SVHC | Not Contained per D(2024)6225-DC (07 Nov 2024) |
| EU RoHS | Compliant per EU 2015/863 |

Compliance Statements

- EU RoHS
- REACH SVHC
- Low-Halogen

Industry Documents

- IPC 1752A Class C

- IPC 1752A Class D
- Molex Product Compliance Declaration
- IEC-62474
- chemSHERPA (xml)

Substances of Interest

- PFAS

EU RoHS Certificate of Compliance

Additional Product Compliance Information

Part Details

General

| | |
|----------------|--|
| Status | Active |
| Category | PCB Headers and Receptacles |
| Series | 502443 |
| Description | 2.00mm Pitch CLIK-Mate Wire-to-Board PCB Receptacle, Single Row, Vertical, with Cover Tape, 4 Circuits |
| Application | Signal, Wire-to-Board |
| Comments | See Product Specification for maximum current rating by circuit size and wire AWG |
| Component Type | PCB Receptacle |
| Product Name | CLIK-Mate |
| UPC | 191128132831 |

Electrical

| | |
|-------------------------------|------------------|
| Current - Maximum per Contact | 3.0A |
| Voltage - Maximum | 250V AC (RMS)/DC |

Physical

| | |
|--------------------------------|---------|
| Circuits (Loaded) | 4 |
| Circuits (maximum) | 4 |
| Color - Resin | Natural |
| Durability (mating cycles max) | 30 |
| Glow-Wire Capable | No |
| Guide to Mating Part | Yes |

| | |
|--------------------------------|-----------------------|
| Keying to Mating Part | Yes |
| Lock to Mating Part | Yes |
| Mated Height | 10.90mm |
| Material - Plating Mating | Tin |
| Material - Plating Termination | Tin |
| Net Weight | 651.000/mg |
| Number of Rows | 1 |
| Orientation | Vertical |
| Packaging Type | Embossed Tape on Reel |
| PCB Locator | No |
| PCB Retention | Yes |
| Pitch - Mating Interface | 2.00mm |
| Plating min - Termination | 1.000µm |
| Polarized to Mating Part | Yes |
| Polarized to PCB | Yes |
| Robotic Placement | Vacuum Pick-Up Tape |
| Stackable | No |
| Temperature Range - Operating | -40° to +105°C |
| Termination Interface Style | Surface Mount |

Mates With / Use With

Mates with Part(s)

| Description | Part Number |
|---|-------------------------------|
| 2.00mm Pitch CLIK-Mate Single Row Plug Housings | <u>502439</u> |