

## Description

STAINLESS STEEL BOLT HOLE CASTOR, GREY RUBBER 50MM

### Fixed

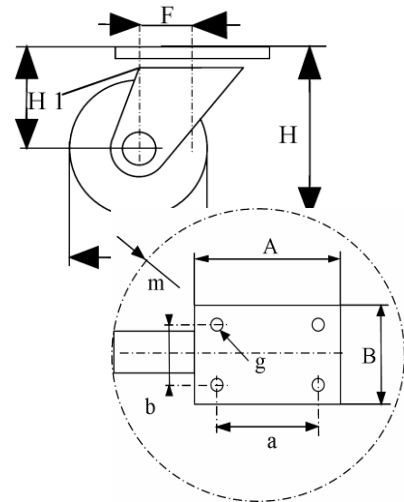
**Part Number**  
**Swivel**  
**JP20A050-325L**



**Swivel and brake**  
**JP20D050-325L**



	Fixed	Swivel	Swivel+brake
Wheel Diameter ØD	50 mm		
Overall Height H	70 mm ±1		
Center hole	12 mm		
Offset F ±1	\	25 mm	25 mm
Width of Tread	18 mm±0,5		
Hardness of tread	shore A ± 93		
Load capacity	40 Kg		
Weight		0,22 kg	0,31 kg
Temperature	- 5 / + 50 °C		



### Castor Assembly :

Pressed stainless steel -AISI 304-. Swivel on two rows of balls.  
Central bolt hole fitting  
Total lock. Plastic pedal.

### Wheel :

Wheel centre made of Grey Polypropylene.  
Tread : Thermoplastic rubber, grey non marking. Plain bearing.

### Features :

Low starting effort,  
Bonded Rubber,  
Corrosion resistant, easy to clean  
Suited for Food industry, Hospital or Industrial Kitchen equipment.