



## 2740 Headlamp



Compact, reliable headlight for harsh conditions - the 2740 LED Headlamp features 3 LEDs, two white and one red. The red LED is very useful for preserving your night vision and the dual white LEDs produce up to 66 lumens of brilliant white light. A low level mode provides extended run time of 21 hours. Designed with weather resistant casings which also allows for fast and easy battery change.

Switch to the new 2740 Headlamp from Peli.

### CONFIGURATIONS

2740 - Standard

### DIMENSIONS

Length: 2.25"

### MATERIALS

**Body:** Polycarbonate (PC)

**O-Ring:** Over-molded TPR

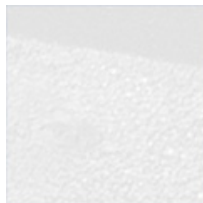
**Lens:** Polycarbonate (PC)

**Shroud:** Polycarbonate (PC)

### COLOURS



Black



White



Translucent Blue



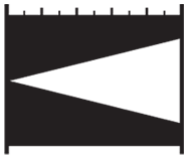


### LIGHT SPECS

Lamp Type: LED

FL1 STANDARD

HIGH

LOW

	66 LUMENS	36 LUMENS
	7h 15mins	21h 0mins
	22m	16m
	122cd	68cd
	IPX4	

## POWER

**Battery Size:** AAA  
**Battery Type:** Alkaline  
**Battery Quantity:** 3  
**Batteries Included:** yes  
**Volts:** 4.5v

## WEIGHT

**Weight With Batteries:** 3.3 oz  
**Weight Without Batteries:** 2.0 oz

## SWITCH

**Switch Type:** Push Button  
**Light Modes:** High / Low

## OTHER

**Minimum Pack:** 1  
**Package Code:** C

**Peli Products, S.L.U.**

c/ Provença, 388, Planta 7 • Barcelona, Spain 08025 • Phone: +34 934 674 999

[info@peli.com](mailto:info@peli.com) • [www.peli.com](http://www.peli.com)