

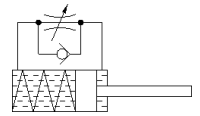
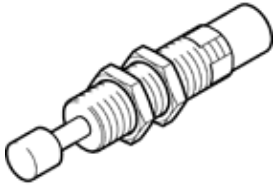
shock absorber

YSRW-20-34

Part number: 191198

FESTO

Self-adjusting, with progressive characteristic curve.



Data sheet

| Feature | Value |
|---|---|
| Size | 20 |
| Stroke | 34 mm |
| Cushioning | self-adjusting Soft characteristic |
| Assembly position | Any |
| Position detection | No |
| Max. impact speed | 3 m/s |
| Reset time short | 0.3 s |
| Reset time long | 1 s |
| Mode of operation | single-acting pushing action |
| Corrosion resistance classification CRC | 2 - Moderate corrosion stress |
| Ambient temperature | -10 ... 80 °C |
| Cushioning length | 34 mm |
| Max. stop force | 3,000 N |
| Max. energy consumption per stroke | 70 J |
| Max. energy consumption per hour | 100,000 J |
| Max. residual energy | 0.32 J |
| Reset force | 10 N |
| Product weight | 330 g |
| Mounting type | with lock nut |
| Materials note | Free of copper and PTFE Conforms to RoHS |
| Material seals | NBR |
| Material housing | Steel Galvanised |
| Material piston rod | High alloy steel |