

Product data sheet

Subminiature connectors



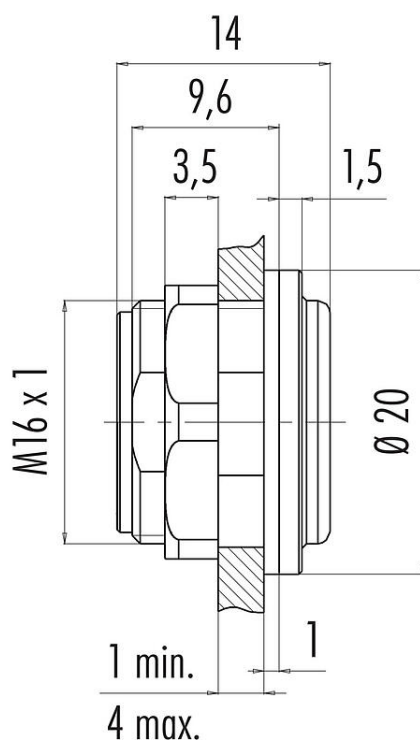
Product description Snap-In IP67 adapter, unshielded

Area Snap-In IP67 series 620
Part no. 08 2629 000 001

Illustration



Scale drawing



You can find the component part drawing and assembly instructions on the next page.

Technical data

General features

Part no.	08 2629 000 001
Connector design	adapter
Version	adapter
Weight (g)	4.02
Customs tariff number	85366990

Electrical parameters

Pollution degree	2
EMC compliance	unshielded

Product data sheet

Subminiature connectors

Product description **Snap-In IP67 adapter, unshielded**

Area **Snap-In IP67 series 620**
Part no. **08 2629 000 001**

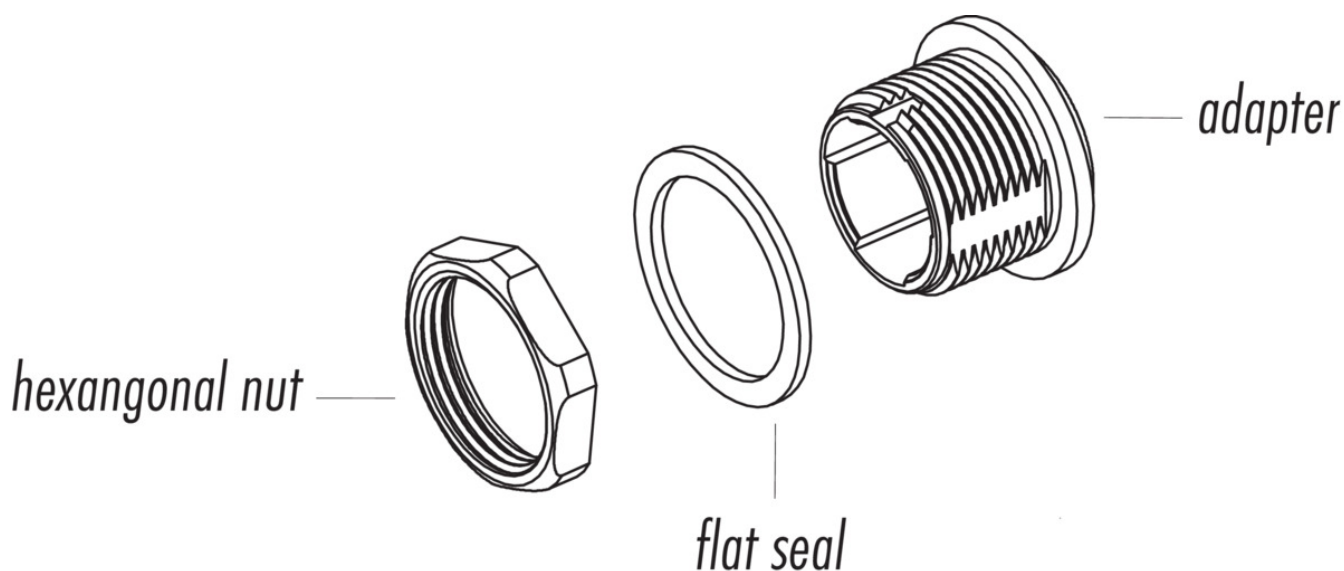
Material

Contact body material	PA (UL94 V-0)
REACH SVHC	CAS 7439-92-1 (Lead)
SCIP number	afa3e37b-2646-4be0-8d97-706c022b4b3b

Classifications

eCl@ss 11.1	27-44-02-08
ETIM 7.0	EC002314

Component part drawing

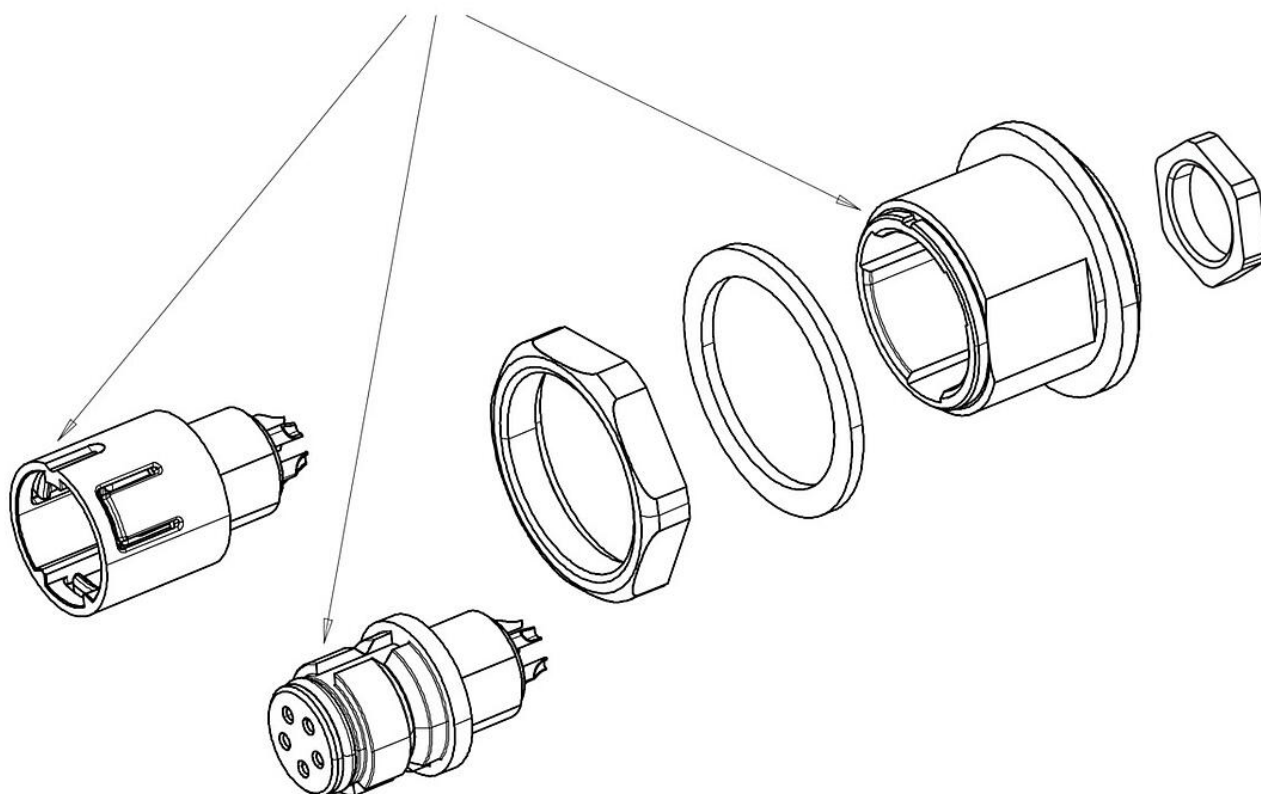


Product description Snap-In IP67 adapter, unshielded

Area Snap-In IP67 series 620
Part no. 08 2629 000 001

Assembly instructions

The marking of the adapter must be conform with the coding nut of the insert

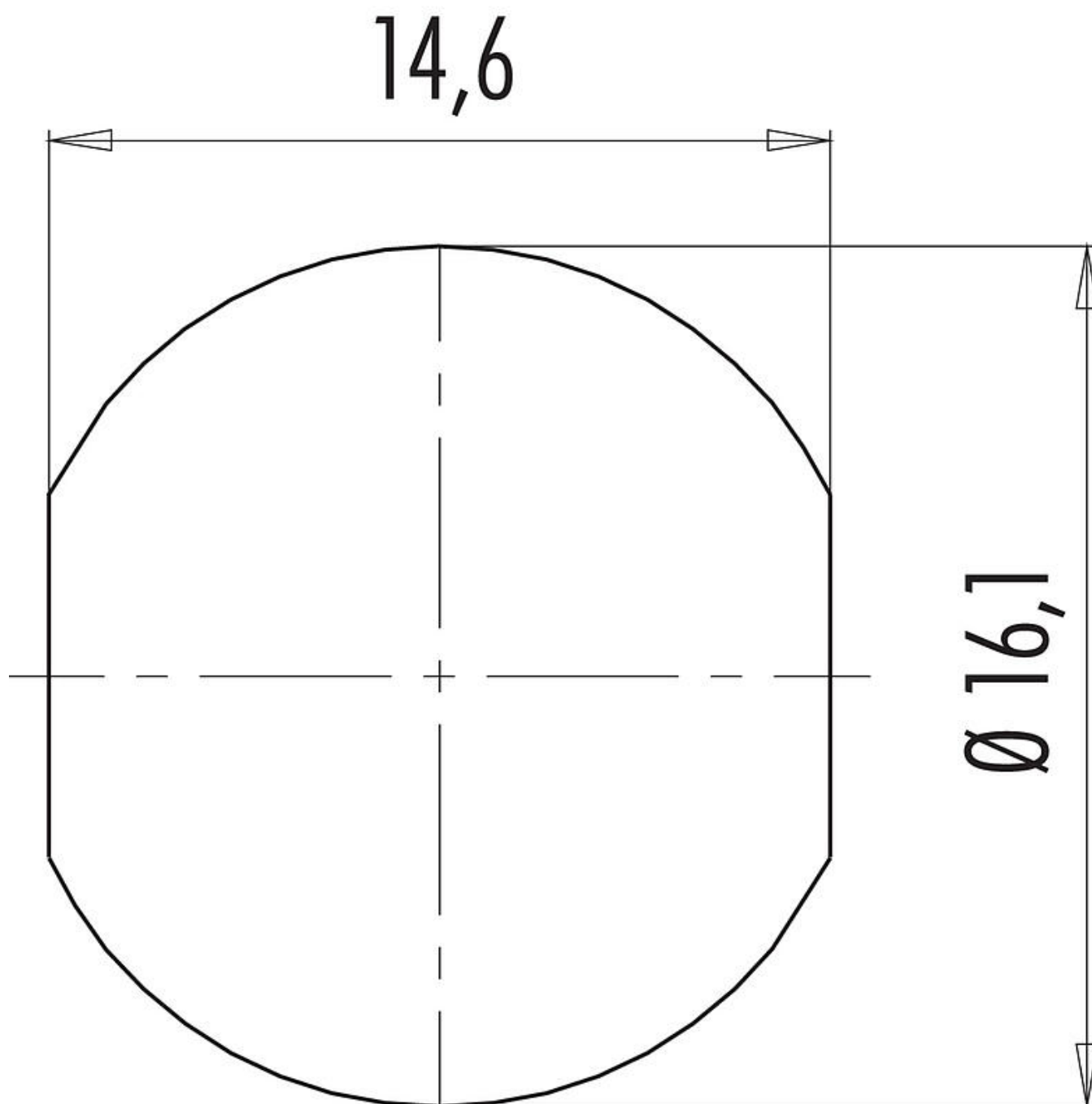


Inserts have to be ordered separately

Product description Snap-In IP67 adapter, unshielded

Area Snap-In IP67 series 620
Part no. 08 2629 000 001

Assembly instructions / Panel cut-out



Product data sheet

Subminiature connectors



Product description	Snap-In IP67 adapter, unshielded
---------------------	----------------------------------

Area	Snap-In IP67 series 620
Part no.	08 2629 000 001

Security notices

The connector must not be plugged or unplugged under load. Non-observance and improper use can result in personal injury.

The connectors have been developed for applications in plant engineering, control and electrical equipment construction. The user is responsible for checking whether the connectors can also be used in other areas of application.