

Datasheet

SP-NO PCB Off-(On) Push Button Switch

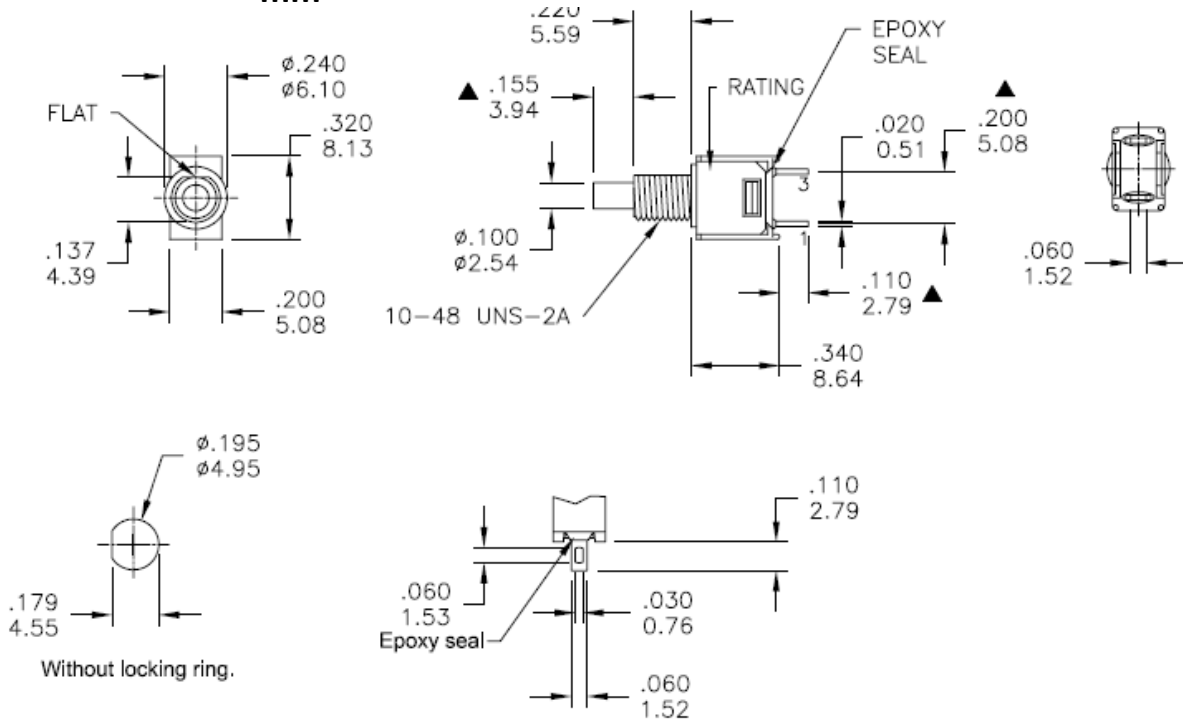
RS Stock number 734-6735



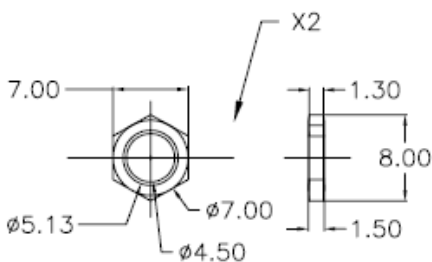
Specifications:

| | |
|------------------------|---|
| Mechanical Life: | 60,000 make-and-break cycles |
| Contact Resistance: | 20mΩ max. initial @ 2-4VDC, 100mA for both silver and gold plated contacts. |
| Insulation Resistance: | 1,000MΩ min. |
| Dielectric Strength: | 1,000 RMS @ sea level |
| Operating Temperature: | -30°C to 85°C |
| Case: | Diallyl phthalate (DAP) (UL94V-0) |
| Plunger: | Thermoplastic polyester-black |
| Bushing: | Brass, nickel plated |
| Housing: | Stainless steel |
| Contact: | Silver or gold plated |
| Terminal: | Brass, silver plated |
| Terminal Support: | Brass, electrotin plated |
| Rating: | R: 0.4VA max. @ 20V max. (AC or DC) Q: 1A @ 250VAC 3A @ 120VAC or 28VDC |

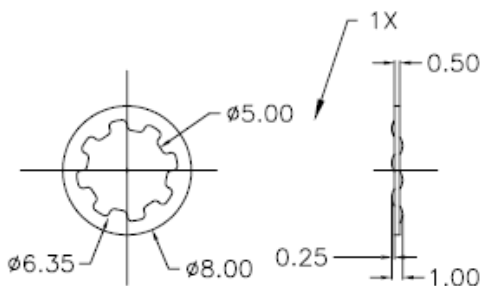
**Dimensions – inch
mm**



PANEL MOUNTING



SOLDER LUG



| Model No. | POS.1 | POS.2 |
|-------------|-------|-------|
| | | |
| 8MS9 | OFF | MOM |
| Term. Comm. | OPEN | 1-3 |
| SCHEMATIC | | |

SWITCH FUNCTION