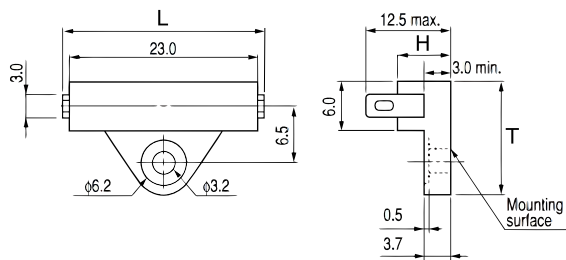


**KEMET Part Number: OHD3-100B**  
(USEO3100B00000)

KEMET, OHD, Thermal Reed Switch, Radial Tab, 5C Temperature Accuracy, High Reliability, High-Speed Response, Long Operational Life, Excellent Environmental Durability, High Temperature Accuracy, 100°C, Break



General Information	
<b>Series:</b>	OHD
<b>Type:</b>	Thermal Reed Switch
<b>Style:</b>	Radial Tab
<b>Description:</b>	Thermal Guard
<b>Features:</b>	High Reliability, High-Speed Response, Long Operational Life, Excellent Environmental Durability, High Temperature Accuracy
<b>Lead:</b>	Tab Leads
<b>RoHS:</b>	Yes

Dimensions	
<b>L</b>	27mm MAX
<b>H</b>	6mm
<b>T</b>	13.5mm

Packaging Specifications	
<b>Packaging:</b>	Tray, Box
<b>Packaging Quantity:</b>	1000
<b>Weight:</b>	2.4 g

Specifications	
<b>Switching Temperature:</b>	100C +/-5C
<b>Temperature Range:</b>	-20/+150C
<b>Contact Type:</b>	Break
<b>Voltage DC:</b>	110 VDC MAX (Opening/Closing), 2500 VAC/1 minute or 3000 VAC/1 second
<b>Voltage AC:</b>	110 VAC MAX (Opening/Closing)
<b>Current:</b>	0.3 Amps AC/DC MAX (Opening/Closing), 0.1 mAmps MIN (1VDC, Opening/Closing)
<b>Resistance:</b>	150 mOhms MAX (Contact Resistance)
<b>Max Opening/Closing Power:</b>	6 W (AC/DC)
<b>Max Opening/Closing Voltage:</b>	110 V (AC/DC)
<b>Differential Temperature:</b>	10C Maximum

Statements of suitability for certain applications are based on our knowledge of typical operating conditions for such applications, but are not intended to constitute - and we specifically disclaim - any warranty concerning suitability for a specific customer application or use. This Information is intended for use only by customers who have the requisite experience and capability to determine the correct products for their application. Any technical advice inferred from this Information or otherwise provided by us with reference to the use of our products is given gratis, and we assume no obligation or liability for the advice given or results obtained.