

# RotorFlow - RFI-Types, Visual Indicators

## Applications - Visual only - RFI

There are varied applications, but some of the more common are:

- ▶ Plastic injection moulding equipment
- ▶ Visual flow on heat exchangers

## Applications - Switch/Analogue Output - RFO & RFA

- ▶ Lasers
- ▶ Medical Equipment
- ▶ X-Ray Tubes
- ▶ Computers
- ▶ Robotic Welding Equipment
- ▶ Water Purification/Dispensing Systems
- ▶ Chemical Metering Equipment
- ▶ Water Sampling
- ▶ Ice Making Machinery
- ▶ Water Injection Systems
- ▶ Proof of Delivery Systems

## OEMS

Specialist designs are available based on your requirements. Please contact Sales Office for further details on options such as potable water, enhanced chemical capabilities or 4-20mA loop powered units.

This is RotorFlow in its most basic form – a **BRIGHT ORANGE ROTOR** turning with fluid flow. Simple, direct and reliable.

Flow rate is estimated, or simply confirmed, by viewing the speed of the turning rotor. Either port may be used for incoming flow, and new bayonet mounting lens is easily removed for quick cleanout. RFI Type RotorFlow sensors are easy to see, easy to install and easy to afford.

## Specifications

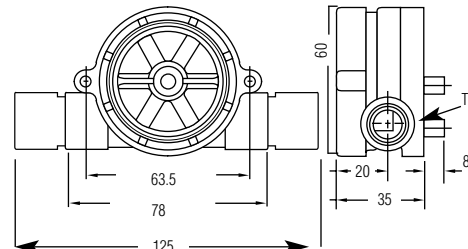
<b>Wetted Materials</b>	
<b>Body</b>	Polypropylene (Hydrolytically Stable, Glass Reinforced), SS or Brass
<b>Rotor pin</b>	Ceramic
<b>Rotor</b>	Moulded Nylon, Colour: High Visibility Orange
<b>Lens</b>	Polysulfone
<b>O-Ring</b>	Buna N (Metal body = Viton)
<b>Adaptor</b>	Acetal (Polypropylene body only)
<b>Max. operating pressure</b>	Polypropylene Body: 7 bar Metal Body: 14 bar
<b>Max. operating temperature</b>	Polypropylene Body: 80°C Metal Body: 100°C
<b>Typical pressure drop</b>	See Graph (Page 68)

## How to Order

Body Material	Port Size	Flow Ranges (l/min)		Order Number	
		Low Range*	Standard Range	BSP	NPT
Polypropylene	1/4"	0.4 to 4.0	2.0 to 20.0	<b>155420BSPP</b>	155420
	1/2"	6.0 to 45.0	15.0 to 75.0	<b>155480BSPP</b>	155480
Brass	1/4"	0.4 to 4.0	2.0 to 20.0	<b>142541BSPP</b>	142541
	1/2"	6.0 to 45.0	15.0 to 75.0	<b>142542BSPP</b>	142542
	3/4"	---	20 to 112.5	180392BSPP	180392
	1"	---	30 to 225	181681BSPP	181681
Stainless Steel	9/16 x 18 UNF	0.4 to 4.0	2.0 to 20.0	N/A	174596
	1/2"	6 to 45	15.0 to 75.0	173138BSPP	173138
	3/4"	---	20 to 112.5	181682BSPP	181682
	1"	---	30 to 225	181683BSPP	181683

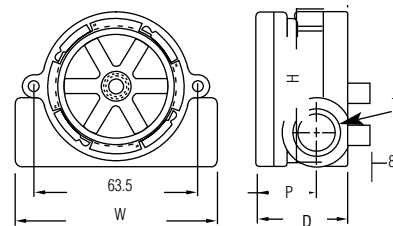
\* With use of low flow adaptor supplied

## Polypropylene Bodies



Adaptors, See Note 1

## Metal Bodies



T	W	H	D	P
1/4	77	60	35	20
1/2	77	60	35	22
3/4	100	66	51	27
1	100	66	51	27

Notes:

1. Adaptors are supplied fitted to plastic units, sealed using Teflon (PTFE) tape.
2. If NPT thread is required for plastic units discard adaptor.
3. For pressure drop curves see RFS page.