

WHEEL P 200X50/60 BB SWIVEL FORK P60

Wheel series P

Monolithic polyammide 6 wheels available with standard shielded or stainless steel precision ball bearings; standard or stainless steel roller bearing; plain bore.
Wheel fitted with ball bearings.

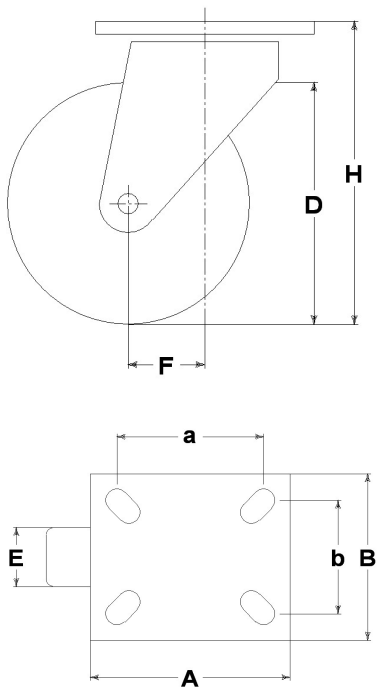
Castor series P60

P60 series, heavy duty pressed steel forks, swivel with hardened steel double races & 'water resistant' protections. Finish: zincplated.



Technical data

Wheel diameter	D	200 mm
Tyre width	E	50,0 mm
Bearing seat diameter	s	52 mm
Bore diameter	d	25 mm
Outer faces bearings distance	V	56 mm
Weight article		4,390 kg
Hub width	L	60 mm
Overall height	H	249 mm
Top plate outer dimensions	AxB	135x110 mm
Bolt hole spacing	axb	105x75 mm
Bolt hole spacing	axb	105x80 mm
Fixing bolt diameter	g	M12
Offset	F	66 mm
Fork width	U	60 mm
Load Capacity		850 kg



Related Articles

- Spare part wheel: [18018CC](#)
- Version with footguard: [17872PP](#)
- Version with trailing brake: [17872FR](#)
- Version with trailing brake and footguard: [17872FRPP](#)
- Version with leading brake: [17872FV](#)
- Version with leading brake and footguard: [17872FVPP](#)

GENERAL INFORMATION / RECOMMENDATIONS AND WARNINGS

The cited text and the complete catalogue in their most up-dated versions are available in the OEM's website page www.lagspa.it/downloads. The dimensions, descriptions, specifications and illustrations herein are indicative and subject to variations without notice. The fact that products are illustrated herein does not necessarily imply they are available from stock nor does it place us under any obligation to supply them. Tests carried out refer to the original products with original accessories: the replacement of one of the components with others of different manufacture might prevent the same results from being achieved and will automatically invalidate any guarantee. Please contact our technical service concerning any special application.