

Panel Mount Signaling Alarms

Bulletin 855P — Panel Mount Signaling Alarms

Build a Catalog Number

- Mounts in standard 22.5 mm hole
- Watertight panel alarms in three different sizes
- Sound output 72...105 dB @ 1 meter
- UL Type 4/4X/13, IP65
- Combination sounder and LED products
- Panel mount strobe or LED indicator products
- Plug-in terminal blocks, IP2X finger-safe rated
- Single-circuit functions include:
 - Sounder with selectable continuous or pulsing tone (also wobble on 65 mm)
 - Combined sounder with LED beacon
 - Xenon flashing strobe
 - LED beacon, selectable steady, or flashing
- Dual-circuit functions include:
 - Two-color LED beacon half-lens illumination
 - Two-color LED beacon full-lens illumination
 - Combined sounder with LED beacon



Standards Compliance

EN/IEC 60947-1
 EN/IEC 60947-5-1
 UL 508
 CSA C22.2 No. 14

Certifications

cULus Listed (File No. E14840, Guides NKCR, NKCR7)
 CE Marked

Build a Catalog Number

Bulletin 855P — Panel Mount Sounder

855P – B 10 ME 22
 a b c d



30 mm Panel Mount Sounder

45 mm Panel Mount Sounder

65 mm Panel Mount Sounder

a		b		c		d	
Housing Color		Voltage		Size		Mounting Hole	
Code	Description	Code	Description	Code	Description	Code	Description
B	Black	30	12...24V AC/DC	SE	30 mm, fully-enclosed, smooth front, 72 dB	22	22.5 mm
		10	120V AC	SH	30 mm, high output, 80 dB		
		20	240V AC	ME	45 mm		
				LE	65 mm		

Voltage	Description	Cat. No.
12...24V AC/DC	30 mm diameter, fully-enclosed, smooth front, 72 dB	855P-B30SE22
	30 mm diameter, high output, 80 dB	855P-B30SH22
	45 mm diameter, 100 dB	855P-B30ME22
	65 mm diameter, 105 dB	855P-B30LE22
120V AC	30 mm diameter, fully-enclosed, smooth front, 72 dB	855P-B10SE22
	30 mm diameter, high output, 80 dB	855P-B10SH22
	45 mm diameter, 100 dB	855P-B10ME22
	65 mm diameter, 105 dB	855P-B10LE22

Bulletin 855PC — Panel Mount Combined Sounder with LED Beacon

855PC – B 10 ME 3 22
a b c d e



45 mm Panel Mount Combined Sounder with LED Beacon

65 mm Panel Mount Combined Sounder with LED Beacon

a		b		c		d		e	
Housing Color		Voltage		Diameter		Lens Color		Mounting Hole	
Code	Description	Code	Description	Code	Description	Code	Description	Code	Description
B	Black	12	12V AC/DC	ME	45 mm	3	Green	22	22.5 mm
		24	24V AC/DC	LE	65 mm	4	Red		
		10	120V AC			5	Amber		
		20	240V AC			6	Blue		
						7	Clear		
						8	Yellow		

Voltage	Diameter [mm]	Lens Color	Cat. No.
24V AC/DC	45	Green	855PC-B24ME322
		Red	855PC-B24ME422
	65	Green	855PC-B24LE322
		Red	855PC-B24LE422
120V AC	45	Green	855PC-B10ME322
		Red	855PC-B10ME422
	65	Green	855PC-B10LE322
		Red	855PC-B10LE422

Bulletin 855PS — Panel Mount Strobe § ♣

855PS – B 10 ME 3 22
a b c d e



30 mm Panel Mount Strobe

45 mm Panel Mount Strobe

65 mm Panel Mount Strobe

a		b		c		d		e	
Housing Color		Voltage		Diameter		Lens Color		Mounting Hole	
Code	Description	Code	Description	Code	Description	Code	Description	Code	Description
B	Black	12	12V AC/DC	SE	30 mm*	3	Green	22	22.5 mm
		24	24V AC/DC	ME	45 mm‡	4	Red		
		10	120V AC	LE	65 mm‡	5	Amber		
		20	240V AC			6	Blue		
		30	12...24V AC/DC			7	Clear		
						8	Yellow		

* Only available in 12V AC/DC, 24V AC/DC, 120V AC, or 240V AC.

‡ Only available in 12...24V AC/DC, 120V, or 240V AC.

Voltage	Diameter [mm]	Lens Color	Cat. No.
24V AC/DC	30	Green	855PS-B24SE322
		Red	855PS-B24SE422
12...24V AC/DC	45	Green	855PS-B30ME322
		Red	855PS-B30ME422
	65	Green	855PS-B30LE322
		Red	855PS-B30LE422
120V AC	30	Green	855PS-B10SE322
		Red	855PS-B10SE422
	45	Green	855PS-B10ME322
		Red	855PS-B10ME422
	65	Green	855PS-B10LE322
		Red	855PS-B10LE422

§ 30 mm units are LED type.

♣ 45 and 65 mm units are Xenon strobe.

Bulletin 855PB — Panel Mount Selectable Steady or Flashing LED Beacon

855PB – B 10 ME 3 22
 a b c d e



30 mm Panel Mount LED Beacon

45 mm Panel Mount LED Beacon

65 mm Panel Mount LED Beacon

a		b		c		d		e	
Housing Color		Voltage		Diameter		Lens Color		Mounting Hole	
Code	Description	Code	Description	Code	Description	Code	Description	Code	Description
B	Black	12	12V AC/DC	SE	30 mm	3	Green	22	22.5 mm
		24	24V AC/DC	ME	45 mm	4	Red		
		10	120V AC	LE	65 mm	5	Amber		
		20	240V AC			6	Blue		
						7	Clear		
						8	Yellow		

Voltage	Diameter [mm]	Lens Color	Cat. No.
24V AC/DC	30	Green	855PB-B24SE322
		Red	855PB-B24SE422
	45	Green	855PB-B24ME322
		Red	855PB-B24ME422
	65	Green	855PB-B24LE322
		Red	855PB-B24LE422
120V AC	30	Green	855PB-B10SE322
		Red	855PB-B10SE422
	45	Green	855PB-B10ME322
		Red	855PB-B10ME422
	65	Green	855PB-B10LE322
		Red	855PB-B10LE422

Bulletin 855PD — Panel Mount Dual Circuit Alarms

855PD – B 24 ME F 3 4 22
a b c d e f g



Half-Lens Illumination

Full-Lens Illumination

Combined Sounder with LED Beacon

a		b		c		d	
Housing Color		Voltage		Diameter		Function	
Code	Description	Code	Description	Code	Description	Code	Description
B	Black	12*	12V AC/DC	SE	30 mm ± Δ	F	2-color, full-lens illumination
		24	24V AC/DC	ME	45 mm	H	2-color, half-lens illumination with barrier
		10	120V AC	LE	65 mm	C	Combined sounder with LED beaconΔ
		20	240V AC				

e		f		g	
LED Color★ /Sound		LED Color♣		Mounting Hole	
Code	Description	Code	Description	Code	Description
1	Sound	3	Green	22	22.5 mm
3	Green	4	Red		
4	Red	5	Amber§		
5	Amber	6	Blue		
6	Blue	7	Clear		
7	Clear	8	Yellow§		
8	Yellow				

± 30 mm available in 24V AC/DC only, for 2-color versions.

Δ The sounder with LED is not available in the 30 mm size.

★ Voltage code 12 is only valid for sounder with LED devices.

§ The color combination of **Yellow** and **Amber** is not allowed because of their similarity.

♣ For two-color devices, the first color code listed in the cat. no. corresponds to the same side as the panel tab found on the housing. For example: Cat. No. 855PDIB24MEH4322 indicates that the **Red** color is on the same side as the panel tab and the **Green** color is on the opposite side as the panel tab.

Function	Voltage	Diameter [mm]	Color(s)	Cat. No.
Sounder with LED	24V AC/DC	45	Green	855PD-B24MEC1322
			Red	855PD-B24MEC1422
		65	Green	855PD-B24LEC1322
			Red	855PD-B24LEC1422
	120V AC	45	Green	855PD-B10MEC1322
			Red	855PD-B10MEC1422
		65	Green	855PD-B10LEC1322
			Red	855PD-B10LEC1422
Half-lens, Steady LED Beacon	24V AC/DC	30	Red & Green	855PD-B24SEH4322
		45		855PD-B24MEH4322
		65		855PD-B24LEH4322
	120V AC	45	Red & Green	855PD-B10MEH4322
		65		855PD-B10LEH4322
Full-lens, Steady LED Beacon	24V AC/DC	30	Red & Green	855PD-B24SEF3422
		45		855PD-B24MEF3422
		65		855PD-B24LEF3422
	120V AC	45	Red & Green	855PD-B10MEF3422
		65		855PD-B10LEF3422

Description	Cat. No.
22.5...30.5 mm hole adapter kit	855P-AHA1

Panel Sounder and Single/Dual Circuit Panel Sounder with LED

Technical						
Housing:	Base Material	Polycarbonate, black				
	Lens	Polycarbonate, red, amber, yellow, green, blue, and clear				
Protection class		UL Type 4/4X/13, IP65				
Terminals		Plug-in terminal block, up to 2.5 mm ² (14 AWG), IP2X				
Operation temperature range		-25...+60 °C (-13...+140 °F)				
Storage temperature range		-25...+85 °C (-13...+185 °F)				
Mounting		Central mounting for bore holes 22 mm or 30.5 mm with hole adapter kit (Cat. No. 855P-AHA1)				
Mounting nut torque		1.7 N•m (15 lb•in)				
Electrical						
		Sounder			Sounder with Warning Light	
		65 mm	45 mm	30 mm	65 mm	45 mm
Supply voltage range	12V AC/DC - 50/60 Hz	—	—	—	+/-10%	+/-10%
	24V AC/DC - 50/60 Hz	—	—	—	+/-10%	+/-10%
	12...24V AC/DC - 50/60 Hz	8...26V AC/DC	8...26V AC/DC	10...26V AC/DC	—	—
	120V AC - 50/60 Hz	50...140V AC	50...140V AC	80...140V AC	+/-10%	+/-10%
	230/240V AC - 50/60 Hz	150...260V AC	150...260V AC	180...260V AC	+/-10%	+/-10%
Nominal current – single circuit (dual circuit)	12V AC/DC - 50/60 Hz	—	—	—	50 mA (62 mA)	35 mA (48 mA)
	24V AC/DC - 50/60 Hz	57 mA	20 mA	20 mA	73 mA (95 mA)	58 mA (73 mA)
	120V AC - 50/60 Hz	40 mA	40 mA	20 mA	60 mA (52 mA)	40 mA (51 mA)
	230/240V AC - 50/60 Hz	42 mA	42 mA	20 mA	63 mA (52 mA)	42 mA (51 mA)
Turn-on leakage current		≥3 mA	≥3 mA	≥3 mA	≥3 mA	≥3 mA
Maximum sound level (average)		105 dBA @ 1 m	100 dBA @ 1 m	SE: 72 dBA @ 1 m SH: 80 dBA @ 1 m	103 dBA @ 1 m	98 dBA @ 1 m
Minimum sound level		<85 dB	<85 dB	—	<85 dB	<85 dB
Sound level adjustment		Stepless	Stepless	—	Stepless	Stepless
Sound main frequency		3300 Hz	3300 Hz	3500 Hz	3300 Hz	3300 Hz
Sound types	Continuous	Yes	Yes	Yes	Yes	Yes
	Pulsing*	Yes	Yes	Yes	Yes	Yes
	Alternating frequency*	Yes	No	No	Yes	No
Sound selection		Externally by terminal connection				
Weight		65 g	35 g	25 g	85 g	55 g

* Single Circuit only.

Panel Strobe and Single/Two Color LED Lights

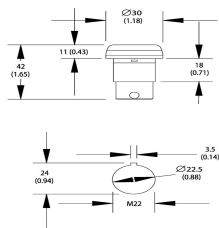
Technical

Housing:	Base Material	Polycarbonate, black
	Lens	Polycarbonate, red, amber, yellow, green, blue, and clear
Protection class	UL Type 4/4X/13, IP2X, IP65	
Terminals	Plug-in terminal block, up to 2.5 mm ² (14 AWG), IP2X finger-safe	
Operation temperature range	-25...+60 °C (-13...+140 °F)	
Storage temperature range	-25...+85 °C (-13...+185 °F)	
Mounting	Central mounting for bore holes 22 mm or 30.5 mm with hole adapter kit (Cat. No. 855P-AHA1)	
Mounting nut torque	1.7 N•m (15 ib•in)	

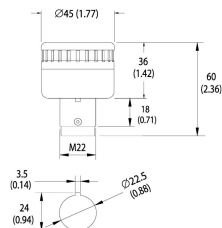
Electrical

	LED Beacon – Steady/Flashing			Strobe Light			
	65 mm	45 mm	30 mm	65 mm	45 mm	30 mm	
Supply voltage range	12V AC/DC - 50/60 Hz	+/-10%	+/-10%	+/-10%	—	—	+/-10%
	24V AC/DC - 50/60 Hz	+/-10%	+/-10%	+/-10%	—	—	+/-10%
	12...24V AC/DC 50/60 Hz	—	—	—	8...26V AC/DC	8...26V AC/DC	—
	120V AC - 50/60 Hz	+/-10%	+/-10%	+/-10%	+/-10%	+/-10%	+/-10%
	230/240V AC - 50/60 Hz	+/-10%	+/-10%	+/-10%	+/-10%	+/-10%	+/-10%
Nominal current – single color (two color w/ full or half illumination)	12V AC/DC - 50/60 Hz	75 mA	60 mA	30 mA	—	—	15 mA
	24V AC/DC - 50/60 Hz	54 mA (full: 71 mA half: 44 mA)	35 mA (full: 46 mA half: 39 mA)	25 mA (full: 28 mA half: 30 mA)	—	—	10 mA
	12...24V AC/DC 50/60 Hz @ 12V	—	—	—	150 mA	110 mA	—
	12...24V AC/DC 50/60 Hz @ 24V	—	—	—	140 mA	100 mA	—
	120V AC - 50/60 Hz	25 mA (full: 61 mA half: 41 mA)	25 mA (full: 35 mA half: 35 mA)	20 mA	30 mA	20 mA	10 mA
	230/240V AC - 50/60 Hz	25 mA (full: 61 mA half: 41 mA)	25 mA (full: 35 mA half: 34 mA)	20 mA	20 mA	12 mA	10 mA
Turn-on leakage current	≥3 mA	≥3 mA	≥3 mA	≥3 mA	≥3 mA	≥3 mA	
Steady/Flashing light	Externally by terminal connection			—	—	—	
Flashing frequency	2 Hz	2 Hz	2 Hz	min. 1.4 Hz	min. 1.4 Hz	min. 1.4 Hz	
Light source	LED			Xenon tube		LED	
Flash energy	—	—	—	1 J	0.5 J	—	
Weight	60 g	40 g	40 g	80 g	60 g	40 g	

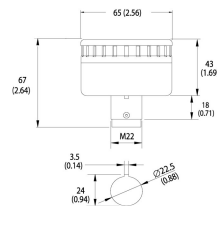
Dimensions in millimeters (inches). Dimensions are not intended to be used for manufacturing purposes.



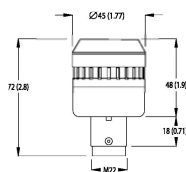
30 mm Sounder*



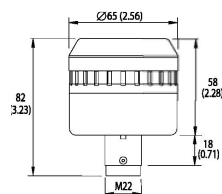
45 mm Sounder‡



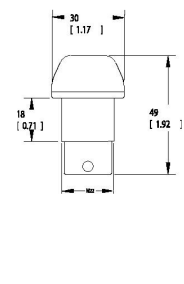
65 mm Sounder‡



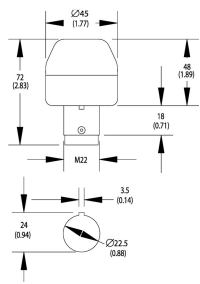
45 mm Combined Sounder with LED Beacon‡



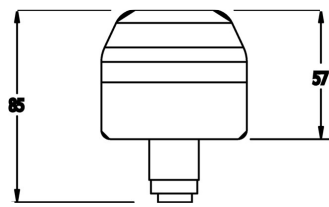
65 mm Combined Sounder with LED Beacon‡



30 mm LED*
30 mm Strobe*



45 mm LED‡
45 mm Strobe‡



65 mm LED‡
65 mm Strobe‡

* Terminal connector adds 14 mm (0.55 in.) to back of panel depth.

‡ Terminal connector adds 9 mm (0.35 in.) to back of panel depth.