



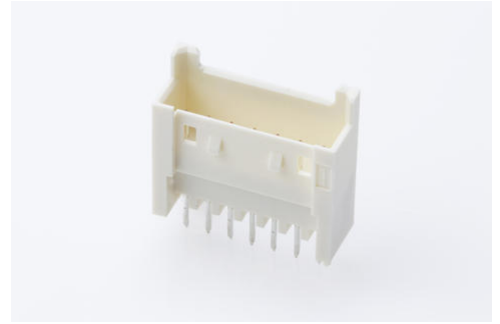
Part Number : [535170730](#)

Product Description : 2.50mm Pitch, Mini-Lock PCB Header, Single Row, Vertical, Through Hole, Matte Tin Plating, Positive Lock, 7 Circuits, with Potting Capability, Tray, 3.50mm PC Tail Length, Natural

Series Number : 53517

Status : Active

Product Category : PCB Headers and Receptacles



Documents & Resources

Drawings

[535170730 sd.pdf](#)

3D Models and Design Files

[STEP AP242](#)

[SOLIDWORKS](#)

[Creo](#)

[Symbol and Footprint \(Multi-Format\)](#)

[535170730.dxf](#)

Specifications

[535179200-SPK-200.pdf](#)


[511030000-PS-000.pdf](#)

[511630000-PS-000.pdf](#)

[511631000-PS-000.pdf](#)

Product Environment Compliance

Compliance

GADSL/IMDS	Not Relevant
China RoHS	 per SJ/T 11365-2006
EU ELV	Not Relevant
Low-Halogen Status	Not Low-Halogen per IEC 61249-2-21
REACH SVHC	Not Contained per D(2024)7663-DC

	(21 Jan 2025)
EU RoHS	Compliant per EU 2015/863

Compliance Statements

- EU RoHS
- REACH SVHC
- Low-Halogen

Industry Documents

- IPC 1752A Class C
- IPC 1752A Class D
- Molex Product Compliance Declaration
- IEC-62474
- chemSHERPA (xml)

Substances of Interest

- PFAS

EU RoHS Certificate of Compliance

Additional Product Compliance Information

Part Details

General

Status	Active
Category	PCB Headers and Receptacles
Series	53517
Description	2.50mm Pitch, Mini-Lock PCB Header, Single Row, Vertical, Through Hole, Matte Tin Plating, Positive Lock, 7 Circuits, with Potting Capability, Tray, 3.50mm PC Tail Length, Natural
Application	Signal, Wire-to-Board
Comments	GWT performed on end product as per IEC 60695-2-11
Component Type	PCB Header
Product Name	Mini-Lock
UPC	191128828628

Agency

UL	E29179
----	--------

Electrical

Current - Maximum per Contact	3.5A
Voltage - Maximum	250V AC (RMS)/DC

Physical

Breakaway	No
Circuits (Loaded)	7
Circuits (maximum)	7
Color - Resin	Natural
Durability (mating cycles max)	30
First Mate / Last Break	No
Glow-Wire Capable	Yes
Keying to Mating Part	None
Lock to Mating Part	Yes
Material - Metal	Copper Alloy
Material - Plating Mating	Matte Tin
Material - Plating Termination	Tin
Material - Resin	Polyamide
Net Weight	1569.017/mg
Number of Rows	1
Orientation	Vertical
Packaging Type	Tray
PCB Locator	Yes
PCB Retention	Yes
PCB Thickness - Recommended	1.60mm
PC Tail Length	3.50mm
Pitch - Mating Interface	2.50mm
Plating min - Mating	1.000µm
Plating min - Termination	1.000µm
Polarized to Mating Part	Yes
Polarized to PCB	Yes
Shrouded	Fully
Stackable	No
Temperature Range - Operating	-55° to +105°C
Termination Interface Style	Through Hole - Kinked Pin

Mates With / Use With

Mates with Part(s)

Description	Part Number
Mini-Lock Single Row Receptacle Housings	<u>51163</u>
Mini-Lock-to-Mini-Lock Off-the-Shelf (OTS) Cable Assemblies	<u>15137</u>

This document was generated on Sep 23, 2025