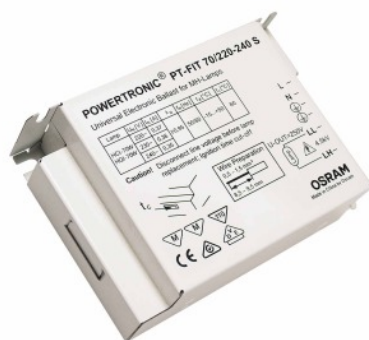


## PT-FIT 35/220...240 S

POWERTRONIC PT-FIT S | ECG for HID lamps, for installation in luminaires



### Areas of application

- Shop lighting
- Health and fitness areas (in dry, corrosion-protected place)
- Effect and accent lighting

### Product benefits

- Optimized cost/benefit factor
- Compact dimensions and low weight for small luminaire designs
- Automatic safety shutdown of lamps in the event of a defect or at end of life (EoL)

### Product features

- Energy Efficiency Index EEI: A2
- Supply voltage: 220...240 V
- Line frequency: 50...60 Hz
- RI suppression: to EN 55015/CISPR 15
- Safety: to EN 61347-2-12
- Line harmonics according to EN 61000-3-2
- Immunity according to EN 61547

Technical data

Electrical data

Lamp wattage	39 W
Line current	0.19 A <sup>1)</sup>
Ignition voltage	4.5 kVp
Operating frequency	0.200...0.240 kHz
System wattage	43.00 W
ECG efficiency	92 %
Input voltage AC	220...240 V
Input voltage range	198...264 V
Mains frequency	50...60 Hz
Power factor $\lambda$	0.95 <sup>2)</sup>
Inrush current	30 A <sup>3)</sup>
Max. no. of ECGs on circuit breaker 10 A	15 <sup>4)</sup>
Max. no. of ECGs on circuit breaker 16 A	26 <sup>4)</sup>
Max. no. of ECGs on 16A MCB with EBN-OS	65 <sup>4)</sup>
Protective conductor current	0.3 mA
U-OUT (working voltage)	250 V
Max. working voltage between LH and LL	250 V
Max. working voltage betw. LL/LH & earth	250 V
Max. capacitance of wire ECG/lamp	120 pF

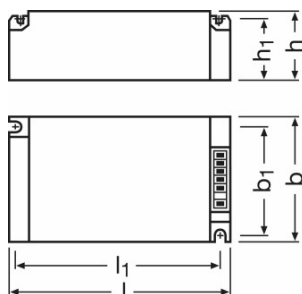
1) At 230 V<sub>AC</sub>

2) Minimum

3)  $t_{width} = 150 \mu s$  (measured at 50 %  $I_{peak}$ )

4) Type B

Dimensions & weight



Length	110.0 mm
Width	75.0 mm

## Product datasheet

Height	30.0 mm
Mounting hole spacing, length	99.0 mm
Mounting hole spacing, width	64.0 mm
Cable cross-section, input side	0.5...1.0 / 0.5...1.5 mm <sup>2</sup> <sup>1)</sup>
Cable cross-section, output side	0.5...1.0 / 0.5...1.5 mm <sup>2</sup> <sup>1)</sup>
Wire preparation length, input side	8.5...9.5 mm
Wire preparation length, output side	8.5...9.5 mm
Product weight	245.00 g

<sup>1)</sup> With ferrule / Without ferrule

### Colors & materials

Casing material	Metal
-----------------	-------

### Temperatures

Ambient temperature range	-15...+65 °C
Maximum temperature at tc test point	85 °C

### Lifespan

ECG lifetime	30000 h <sup>1)</sup>
--------------	-----------------------

<sup>1)</sup> At maximum T<sub>c</sub> / 10 % failure rate

### Additional product data

Design / version	Built-in unit
------------------	---------------

### Capabilities

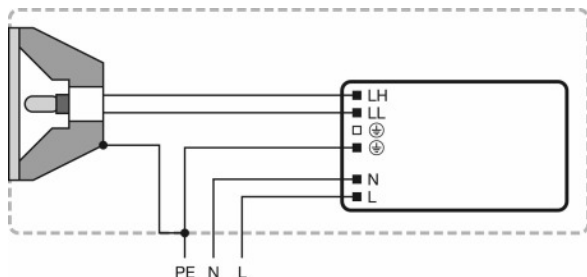
Max. cable length to lamp/LED module	1.5 m
Overheating protection	Power reduction and switch off at T > 85 °C at the tc point
ECG reset time	> 0.5 s
Dimmable	No
Restriction on ignition time	20 min
Suitable for fixtures with prot. class	I

### Certificates & standards

Approval marks – approval	VDE / VDE-EMC / EAC / C-Tick
Type of protection	IP20
EEI – Energy Label	A2
Standards	Acc. to EN 61347-2-12/Acc. to EN 55015/Acc. to EN 61000-3-2/Acc. to EN 61547

### Wiring Diagram

---



---

Wiring diagram

---

### Thermal characteristics

Ballast losses and lamp heat radiation can lead to heat accumulation in a completely closed case. Therefore it is necessary to ensure that the temperature at the measuring point  $t_c$  of the ECG does not exceed the maximum value.





---

### Attention!

For safety reasons disconnect the device before replacing the lamp!

---

### Download Data

File	
	Tender Documents Tender Document for POWERTRONIC EVG.eng
	Certificates EMC-Marks approval
	Certificates VDE-Marks approval
	Certificates EAC PT family

## Product datasheet



Declarations of conformity  
Declaration of conformity



Installation/Operation notice  
Technical guide - POWERTRONIC for HID-lamps (GB)



On-Pack-Info  
EAC - PTI S PT-FIT S

### Logistical Data

Product code	Product description	Packaging unit (Pieces/Unit)	Dimensions (length x width x height)	Volume	Gross weight
4008321386625	PT-FIT 35/220...240 S	Shipping carton box 20	412 mm x 136 mm x 152 mm	8.52 dm <sup>3</sup>	5169.89 g

The mentioned product code describes the smallest quantity unit which can be ordered. One shipping unit can contain one or more single products. When placing an order, for the quantity please enter single or multiples of a shipping unit.

### Disclaimer

Subject to change without notice. Errors and omission excepted. Always make sure to use the most recent release.