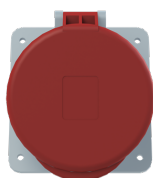


PRODUCT-DETAILS

463RAU6

Ind. P&S#463RAU6



General Information

Extended Product Type	463RAU6
Product ID	2CMA167430R1000
EAN	7392696674300
Catalog Description	Ind. P&S#463RAU6
Long Description	Socket-outlet, panel mounting, earthing sleeve position 6h, rated current 63A, IP44 splashproof, unified flange, angled, 3-poles+neutral+earth, frequency 50-60 Hz, color code Red

Ordering

E-Number (Sweden)	E2416691
E-Number (Finland)	2421286
E-Number (Norway)	1563383
EAN	7392696674300
Country of Origin	Czech Republic (CZ)
Minimum Order Quantity	1 piece

Dimensions

Product Net Width	100 mm
Product Net Height	143 mm
Product Net Weight	0.65 kg
Mechanical Drawings	9AKK107991A3782

Container Information

Package Level 1 Width	112 mm
Package Level 1 Depth / Length	112 mm
Package Level 1 Height	139 mm
Package Level 1 Gross Weight	0.69 kg
Package Level 1 EAN	7392696674300
Package Level 1 Units	box 1 piece
Package Level 2 Width	800 mm
Package Level 2 Depth / Length	1200 mm
Package Level 2 Height	900 mm
Package Level 2 Gross Weight	261.5 kg
Package Level 2 EAN	7392696073141
Package Level 2 Units	pallet (lift) 350 piece

Environmental

RoHS Status	Following EU Directive 2011/65/EU
-------------	-----------------------------------

Certificates and Declarations (Document Number)

Declaration of Conformity - CE	2CMC700005D0001
Environmental Information	2CMC000056M0000
RoHS Information	2CMC700005D0001
SEMKO Certificate	1614204
REACH Declaration	2CMC700005D0001

Additional Information

Additional Information	3P+N+E
Ambient Temperature	-25 ... 40 °C
Cable Cross-Section	6 ... 25 mm ²
Cable Diameter	17 ... 35 mm
Color	Red
Connection Type	Screw
Degree of Protection	IP44
Frequency (f)	50 Hz 60 Hz
Function	Socket outlet, panel mounting, unified flange, angled
Housing Material	Thermoplastic (PBT)
Invoice Description	Ind. P&S#463RAU6
Mounting Holes	84x80
Mounting Type	unified flange, angled
Number of Poles	5
Order Multiple	1 piece
Product Main Type	TRAU
Product Name	Panel mounted socket

Protection Type	Splashproof
Rated Current (I_n)	63 A
Rated Frequency (f)	50...60 Hz
Rated Voltage (U_r)	200/346 ... 240/415 V
Recommended Screw Driver	PH2
Standards	IEC 60309-1, -2
Suitable For	Socket Outlets for Panel Mounting
Suitable for Product Class	IEC Industrial Plugs and Sockets
Instructions and Manuals	2CMC000038M0001
Installation Manual	2CMC000038M0001
RAL Number	RAL 7001 - Silver Grey

Classifications

eClass	27440504
UNSPSC	39121406

Technical

Wire Size	8 ... 4 AWG
Tightening Torque	WireClamp3.5 N·m

Categories

Low Voltage Products and Systems → Industrial Plugs and Sockets → Tough & Safe → Socket Outlets for Panel Mounting

