

Reed Relays

Features

- Easy Installation
- Designed to use with the most brands
- Red Led Indicator
- Acetal Co-Polymer
- SPST Normally open

RS PRO Reed Relays

RS Stock No.: 480-2349



RS PRO is the own brand of RS. The RS PRO Seal of Approval is your assurance of professional quality, a guarantee that every part is rigorously tested, inspected, and audited against demanding standards. Making RS PRO the Smart Choice for our customers.

Product Description

This magnetic cylinder sensor can be used to adjust stroke and is designed for use with most brands of T-slot cylinders etc. Installation is easily achieved by placing into the slot from above, then sliding and securing into position by means of the screw.

General Specifications

Contact Configuration	SPST Normally Open
Relay Switching Classification	Reed
Number of Poles	2 ;
Latching	N/A
Contact Form	N/A
Special Features	Red LED Indicator
Contact Material	Acetal Co-Polymer
Case Material	Acetal Co-Polymer

Electrical Specifications

Operate Voltage	5~240V DC/AC
Sensor Current	1~100 mA
Sensitivity	35~45 Gauss
Switch Rating	10 W Max
Terminal Type	2 Wire Solid State
Voltage Drop	2.5V Max.@100mA DC
Switch Rating	10 W Max
Sensor Frequency	200Hz
Twin cable type	Φ2.9, 2C, Grey Oil-Resistant PUR
Capacitance	N/A

Parameters	AC	DC
Maximum Switching Current	1~100 mA	1~100 mA
Maximum Switching Voltage	5~240V DC/AC	5~240V DC/AC
Maximum Switching Power	10 W Max	10 W Max
Isolation Coil To Contact	N/A	N/A
Carry Current	1~100 mA	1~100 mA

Mechanical Specifications

Mounting Type	T Slot (5.7 x 4.4mm)
Dimension	3M Cable
Length	31.4mm
Height	4.4mm
Depth	6.2 x 5.7mm

Operation Environment Specifications

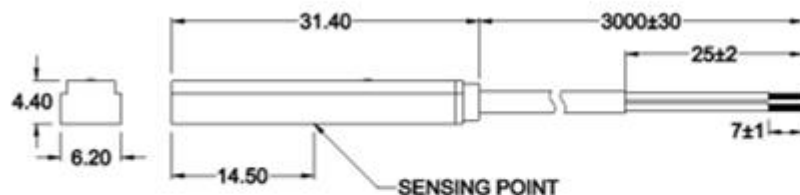
Operating Temperature Range	-10~70°C
Maximum Operating Temperature	70°C
Minimum Operating Temperature	-10°C
Storage Temperature	-10~70°C
Shock	30G
Vibration	9G
Soldering Temperature	As required.

Approvals

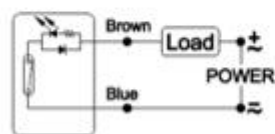
Compliance/Certifications	CE Certificate NO.	E8N 111 04 53334 005
Standards Met	3C Certificate NO.	200401030512
Declarations	CNEx Certificate NO	CNEx16.2333X (ExnCIICT6GC)

Reed Relays

RS Pro 480-2349

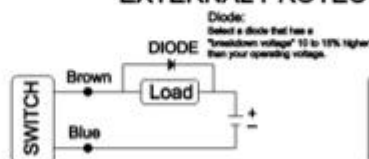


CIRCUIT & CONNECT DIAGRAM

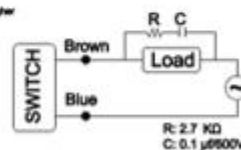


The brown wire series load to the positive (+) and the blue to the negative (-) of power source.

EXTERNAL PROTECT CIRCUIT



Applicable to
DC Conductive Load



Applicable to
AC Conductive Load

RS PRO VDMA 24562 Reed T Slot Cylinder Position Switch.

Model Number AG39R-03

Specification at 25°C

Switching Logic	SPST Normally Open
Sensor Type	Reed Switch
Output Type	2 Wire Solid State
Voltage Range	5~240V DC/AC
Sensor Current	1~100 mA
Switch Rating	10 W Max
Consumption	-
Voltage Drop	2.5V Max.@100mA DC
Leakage Current	-
Indicator	Red LED
Cable	Φ2.9, 2C, Grey Oil-Resistant PUR
Sensitivity	35~45 Gauss
Sensor Frequency	200Hz
Temperature	-10~70°C
Shock	30G
Vibration	9G
Ingress Protection	IP67 (EN60529)
Protection Circuit	-
CE Certificate NO.	E8N 111 04 53334 005
3C Certificate NO.	200401030512
CNEx Certificate NO	CNEx16.2333X (ExnCIICT6GC)