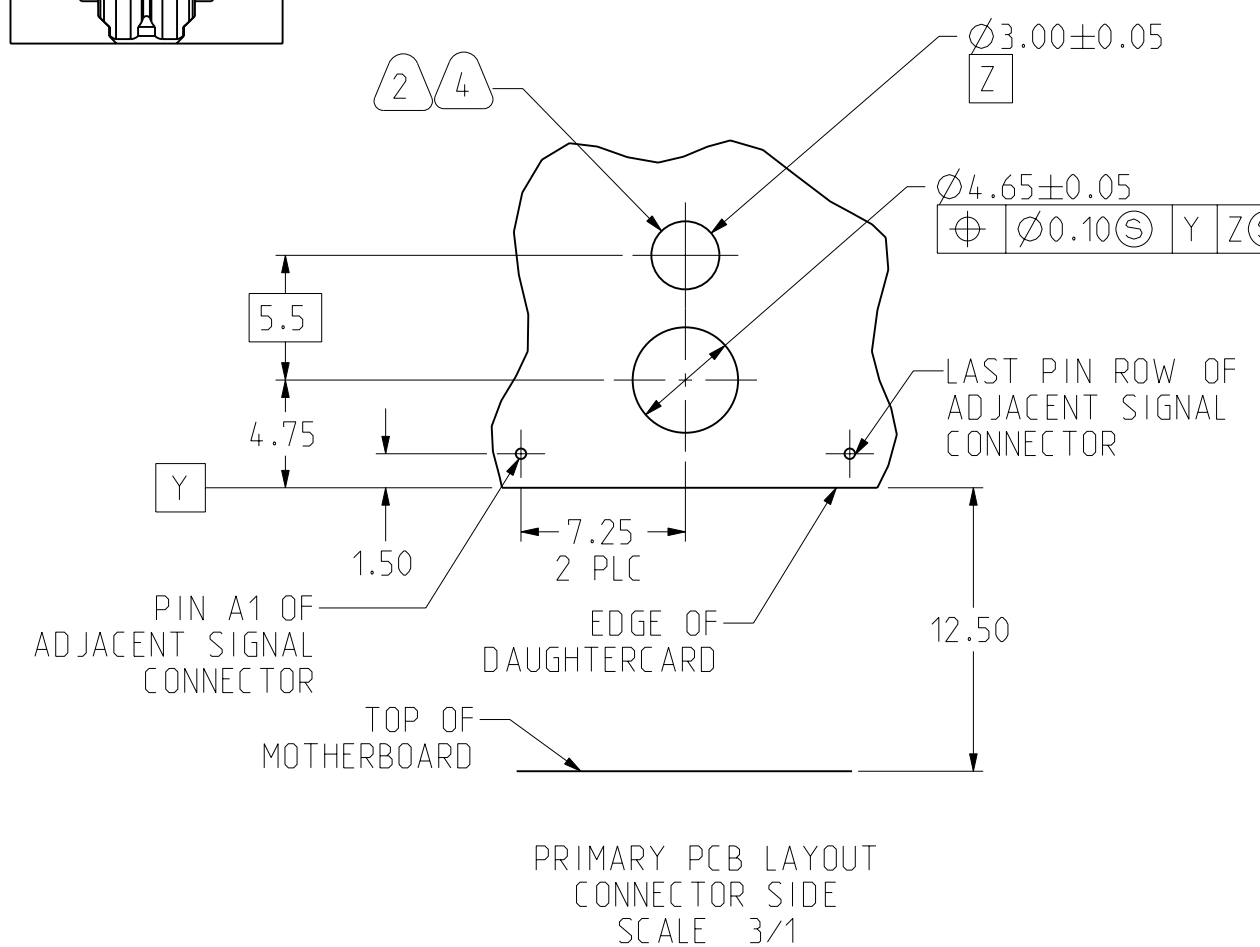
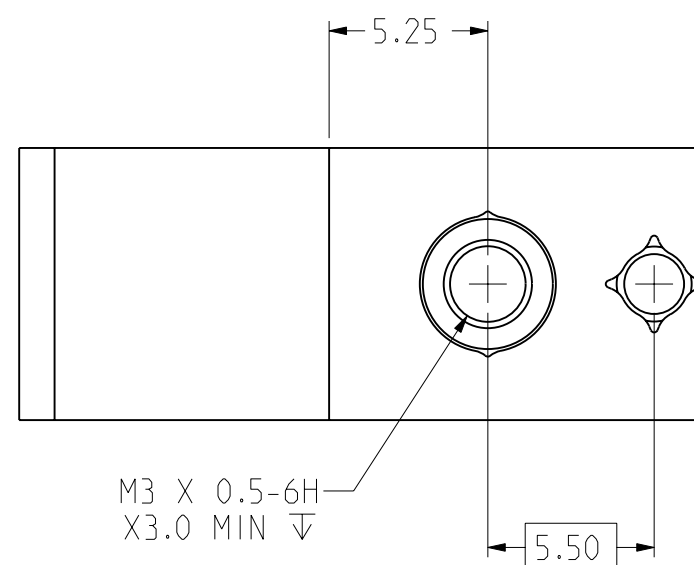
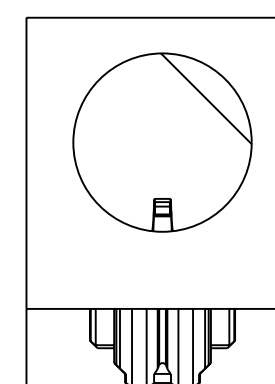
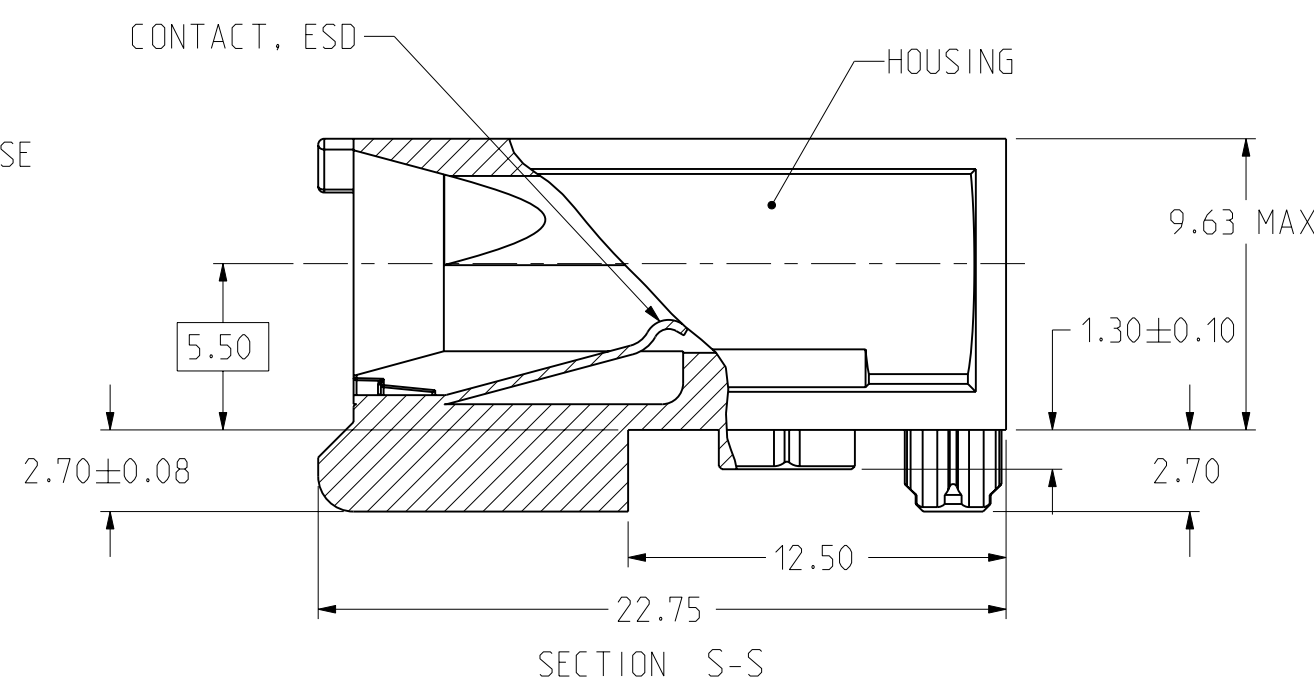
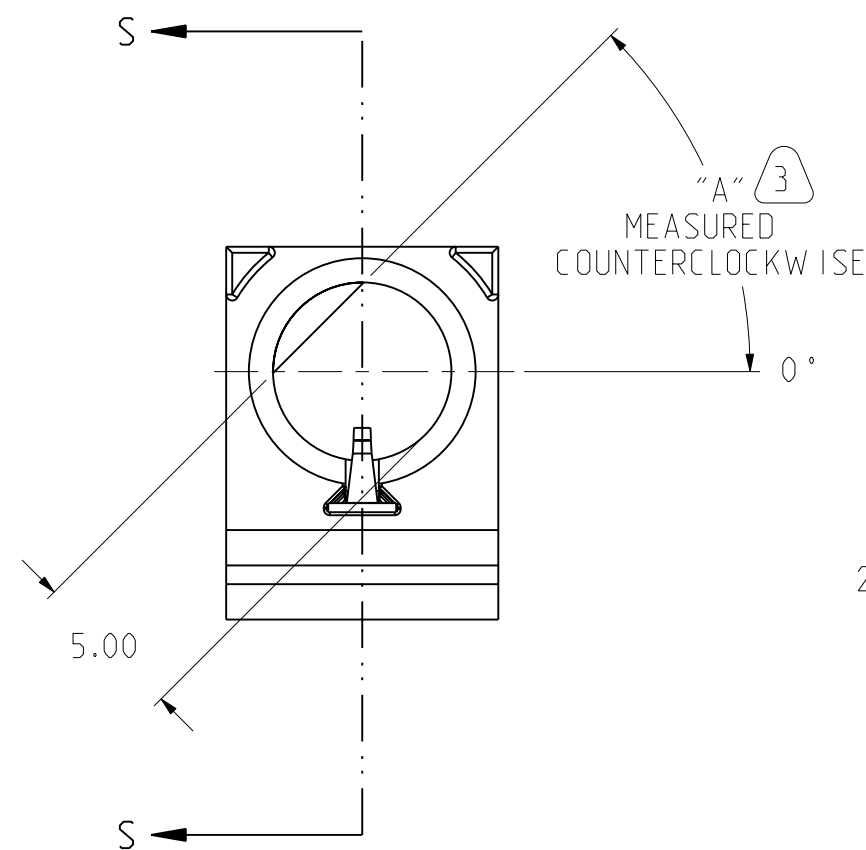
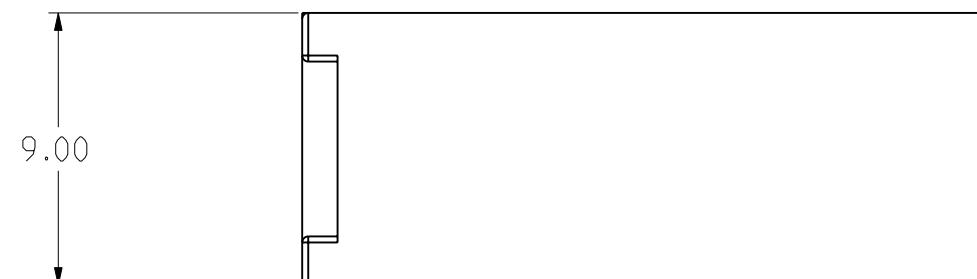


REV. A		SHEET 1 OF 1		DOCUMENT NO. RVPX-HMD-X	
REVISIONS M					
LTR	DESCRIPTION		DATE		
A	INITIAL RELEASE				

PART NUMBER	DIM "A"
RVPX-HMD-1	0°
RVPX-HMD-2	45°
RVPX-HMD-3	90°
RVPX-HMD-7	270°
RVPX-HMD-8	315°
RVPX-HMD-9	NO KEY



- 7 GUIDE MODULE W/O KEYING
GUIDE PIN RVPX-HPD-X SERIES MUST BE ORIENTED TO PROVIDE PROPER ESD PERFORMANCE
- 6 CONTACT FINISH: 3.81µm MINIMUM SILVER IN CONTACT AREA OVER 1.27µm MINIMUM NICKEL ALL OVER
- 5 FINISH: SILVER OVER NICKEL OVER COPPER
- 4 GROUND PAD Ø5mm ON BOTH SIDE OF PCB
- 3 SEE TABLE 1 FOR KEY ORIENTATION (P/N RVPX-HMD2 SHOWN ON DRAWING)
- 2 HOLE FOR POSTIVE RETENTION SCREW.
- 1 MATERIAL: HOUSING: ZINC ALLOY DIE CASTING ZAMAK 3.
CONTACT: COPPER 7025

NOTES:

THE USE OF THIS DOCUMENT IS UNLIMITED. HOWEVER, DOCUMENTS REFERENCED HEREON MAY CONTAIN LIMITED RIGHTS DATA.

NONE NEXT ASSEMBLY

PRO/ENGINEER INFORMATION
 Pro/e Model Used:
 RVPX-HMD-XM.ASSEM
 Drawing Name:
 RVPX-HMD-X

UNLESS OTHERWISE SPECIFIED		SPECIFICATIONS		POS	QTY	PART NUMBER	DESCRIPTION	NOTE
LINEAR DIMENSIONS ARE IN MILLIMETERS TOLERANCES: .XXXX = ±. - ANGLES= ±1° .XXX = ±. - .XX = ±.13 .X = ±.5		MATERIAL SPEC. SEE NOTE 1		APPROVALS		DATE		PARTS LIST AMPHENOL CORPORATION 40-60 DELAWARE AVENUE SIDNEY, N.Y. 13858 RVPX DAUGHTERCARD GUIDE DIECAST
DIM. & TOL. PER ASME Y14.5M; DRM PER MIL-DTL-31000; OTHER Amphenol Stds. PER 9-3800		PROCESS SPEC. SEE NOTE 5		PREPARED BY H. BROOKER		1-Jul-16		
LEGENDS: = FLAG NOTE CALL OUT REFERENCE ONLY				ENGINEER IN CHARGE S. LANGELIER				
				DESIGN MANAGER J. PAUL				
				DESIGN ACTIVITY GROUP BOARD LEVEL				SIZE C
				THIRD ANGLE PROJECTION		CAGE CODE 77820	DOCUMENT NO. RVPX-HMD-X	REV. A
						SCALE: 4.0	REF. RVPX-HMDX	SHEET 1 OF 1