



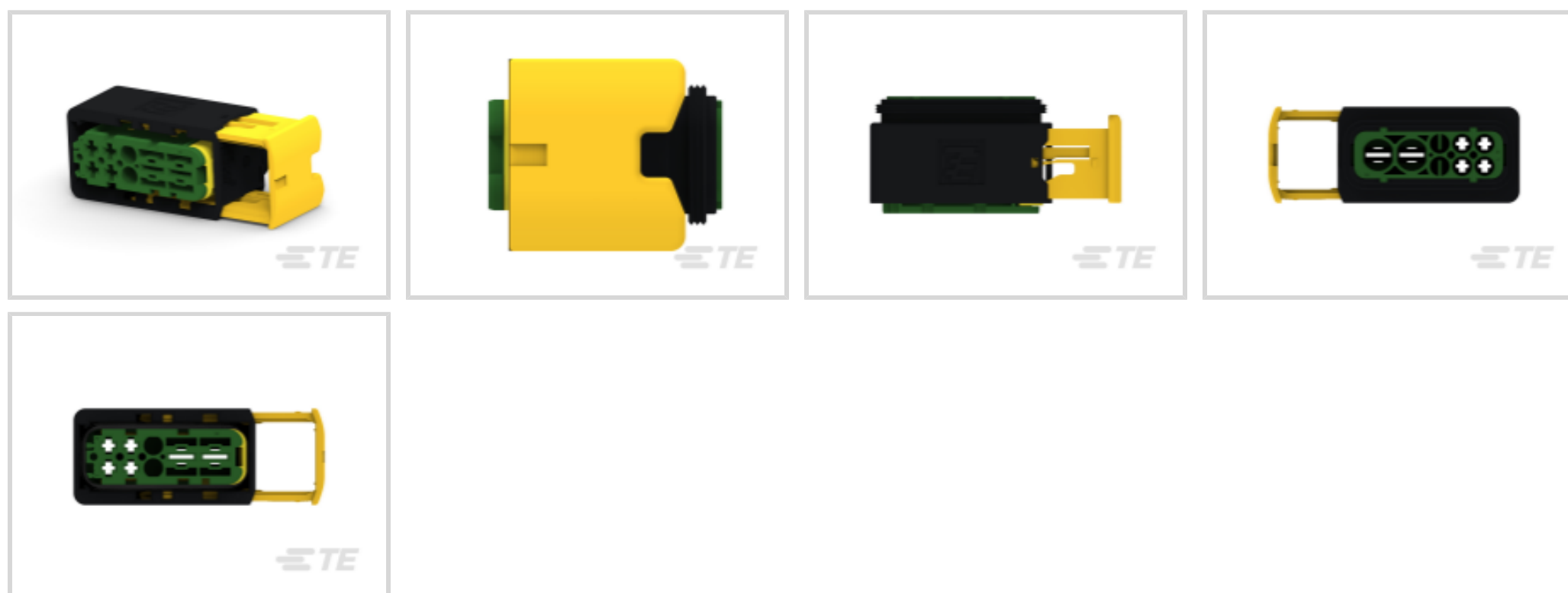
AMP | HDSCS

TE Internal #: 3-2299782-2

HDSCS, Housing for female terminals, Cable-to-Cable, 6 Position, 6mm / 9mm [.236in / .354in] Centerline, Sealable, Green, Power & Signal, Code C

[View on TE.com >](#)

Connectors > Automotive, Truck, Bus, & Off-Road Connectors > Connector Housings > HDSCS HOUSINGS



Connector Style: **Housing for female terminals**  
 Mating Tab Width: **2.8 mm, 6.3 mm [ .11 in, .25 in ]**  
 Connector System: **Cable-to-Cable**  
 Number of Positions: **6**  
 Centerline (Pitch): **6 mm, 9 mm [ .236 in, .354 in ]**

[All HDSCS HOUSINGS \(186\)](#)

**Features**

**Product Type Features**

Connector Style	Housing for female terminals
Connector System	Cable-to-Cable
Sealable	Yes
Hybrid Connector	Yes
Primary Locking Feature	On the Terminal
Connector & Contact Terminates To	Wire & Cable
Strain Relief	No

**Configuration Features**

Blank Cavity Position	2
Number of Positions	6
Number of Rows	1, 2

**Electrical Characteristics**

--	--



Operating Voltage	60 VDC
-------------------	--------

### Body Features

Cable Exit Angle	180, 90°
Body Material	PBT GF
Color	Green
Connector Code	C

### Contact Features

Mating Tab Width	2.8 mm, 6.3 mm [.11 in][.25 in]
------------------	---------------------------------

### Mechanical Attachment

Mounting Feature	With
Terminal Position Assurance	No
Polarized	Yes

### Housing Features

Centerline (Pitch)	6 mm, 9 mm [.236 in][.354 in]
--------------------	-------------------------------

### Dimensions

Height	31.25 mm
Length	67.2 mm
Width	25.7 mm

### Usage Conditions

Operating Temperature Range	-40 – 140 °C [-40 – 284 °F]
-----------------------------	-----------------------------

### Operation/Application

Circuit Application	Power & Signal
---------------------	----------------

### Industry Standards

Degree of Protection	IP67, IP69K
Agency/Standard	DIN IEC 512
UL Flammability Rating	UL 94V-0

### Packaging Features

Packaging Method	Box
------------------	-----

### Other

Serviceable	Yes
Connector Position Assurance Capable	No



## Product Compliance

[For compliance documentation, visit the product page on TE.com>](#)

EU RoHS Directive 2011/65/EU	Compliant
EU ELV Directive 2000/53/EC	Compliant
China RoHS 2 Directive MIIT Order No 32, 2016	No Restricted Materials Above Threshold
EU REACH Regulation (EC) No. 1907/2006	Current ECHA Candidate List: JUL 2019 (201) Candidate List Declared Against: JAN 2017 (173) Does not contain REACH SVHC
EU REACH Regulation (EC) No. 1907/2006	Current ECHA Candidate List: JUL 2019 (201) Candidate List Declared Against: JAN 2017 (173)
Halogen Content	Not Low Halogen - contains Br or Cl > 900 ppm.
Solder Process Capability	Not reviewed for solder process capability

### Product Compliance Disclaimer

This information is provided based on reasonable inquiry of our suppliers and represents our current actual knowledge based on the information they provided. This information is subject to change. The part numbers that TE has identified as EU RoHS compliant have a maximum concentration of 0.1% by weight in homogenous materials for lead, hexavalent chromium, mercury, PBB, PBDE, DBP, BBP, DEHP, DIBP, and 0.01% for cadmium, or qualify for an exemption to these limits as defined in the Annexes of Directive 2011/65/EU (RoHS2). Finished electrical and electronic equipment products will be CE marked as required by Directive 2011/65/EU. Components may not be CE marked. Additionally, the part numbers that TE has identified as EU ELV compliant have a maximum concentration of 0.1% by weight in homogenous materials for lead, hexavalent chromium, and mercury, and 0.01% for cadmium, or qualify for an exemption to these limits as defined in the Annexes of Directive 2000/53/EC (ELV). Regarding the REACH Regulations, TE's information on SVHC in articles for this part number is still based on the European Chemical Agency (ECHA) 'Guidance on requirements for substances in articles' (Version: 2, April 2011), applying the 0.1% weight on weight concentration threshold at the finished product level. TE is aware of the European Court of Justice ruling of September 10th, 2015 also known as O5A (Once An Article Always An Article) stating that, in case of 'complex object', the threshold for a SVHC must be applied to both the product as a whole and simultaneously to each of the articles forming part of its composition. TE has evaluated this ruling based on the new ECHA "Guidance on requirements for substances in articles" (June 2017, version 4.0) and will be updating its statements accordingly.

## Compatible Parts

			
<p>TE Model / Part # CAT-H3399-SL34 HDSCS FIXING SLIDES</p>	<p>TE Model / Part # CAT-H3399-B128 HDSCS BACKSHELLS</p>	<p>TE Model / Part # CAT-H3399-C1748 HDSCS PROTECTION CAPS</p>	<p>TE Model / Part # CAT-AM705-T273 AMP MCP, RECEPTACLE AND TAB</p>



TE Model / Part # 1394511-1  
EINZELLEITDICHTG,WS



TE Model / Part # 1823111-1  
SINGLE WIRE SEAL, FOR WIRE 2.5SQMM, BN



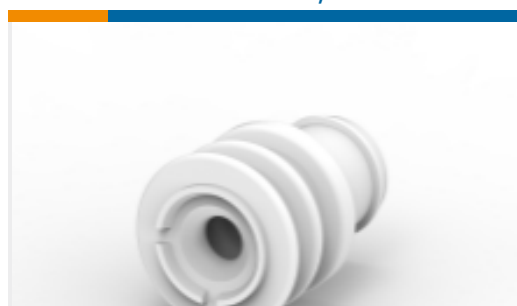
TE Model / Part # 1719043-1  
SINGLE WIRE SEAL, GREEN



TE Model / Part # 828922-1  
2,5MM CAVITY PLUG FOR 5,4MM DI



TE Model / Part # 1394512-1  
EINZELLEITDICHTG, BL



TE Model / Part # 828905-1  
SINGLE-WIRE-SEAL (5MM HOLE)



TE Model / Part # 828904-1  
SINGLE WIRE SEAL FOR J. P.T. CON



TE Model / Part # 2177018-1  
SINGLE WIRE SEAL, AMP MCP6.3/4.8K, YW

## Also in the Series | HDSCS



Automotive Connector Caps & Covers(19)



Automotive Seals & Cavity Plugs(1)



Automotive, Truck, Bus, & Off-Road Housings(189)



Other Automotive Connector Accessories(22)

## Documents

### Product Drawings

8POS, MIXED, REC HSG, ASSY, SLD

English

### CAD Files

3D PDF

3D

Customer View Model

[ENG\\_CVM\\_CVM\\_3-2299782-2\\_A.2d\\_dxf.zip](#)

English

Customer View Model

[ENG\\_CVM\\_CVM\\_3-2299782-2\\_A.3d\\_igs.zip](#)

English

Customer View Model

[ENG\\_CVM\\_CVM\\_3-2299782-2\\_A.3d\\_stp.zip](#)

English

3-2299782-2

HDSCS, Housing for female terminals, Cable-to-Cable, 6 Position, 6mm / 9mm [.236in / .354in] Centerline, Sealable, Green, Power & Signal, Code C



[Datasheets & Catalog Pages](#)

[HDSCS Catalog](#)

English