



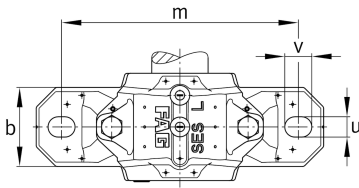
**FAG**

### SES507-606-L

Plummer block housing

Split plummer block housing for various bearing designs. The SNV series will be replaced by the new SES series in 2022.

## Technical information

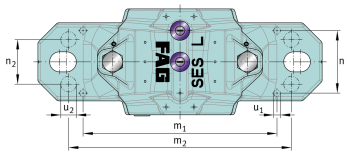
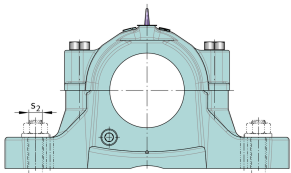
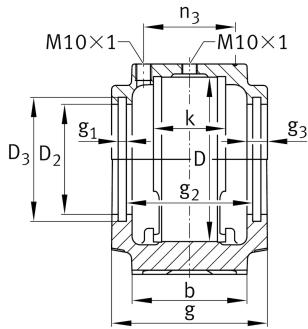
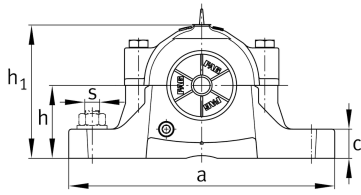


### Main Dimensions & Performance Data

D	72 mm	Outside diameter bearing
a	185 mm	Length base
h <sub>1</sub>	93 mm	Height
g	82 mm	Width housing body
K	34 mm	Width bearing seat
≈m	2.28 kg	Weight



## Dimensions



b	52 mm	Width base
c	22 mm	Height base
h	50 mm	Base to shaft centerline height
m	150 mm	Distance fixing bore
s	12.7 mm	Screw size
s	M12	Size of fixing screws
u	15 mm	Width slot
v	20 mm	Length slot
D <sub>2</sub>	46.5 mm	Diameter sealing
D <sub>3</sub>	54.5 mm	Diameter sealing groove
D <sub>5</sub>	52.7 mm	Outside diameter sealing labyrinth
g <sub>1</sub>	5 mm	Width sealing groove
g <sub>2</sub>	66 mm	Distance sealing
g <sub>3</sub>	11 mm	Wall thickness
g <sub>4</sub>	27 mm	Distance oil lubrication
m <sub>1</sub>	124 mm	Distance holes aligned pins m1
n <sub>3</sub>	47 mm	Distance lubrication
n <sub>4</sub>	70 mm	Distance lubrication sealing
u <sub>1</sub>	4 mm	Bore diameter u1
u <sub>2</sub>	9 mm	Bore diameter u2