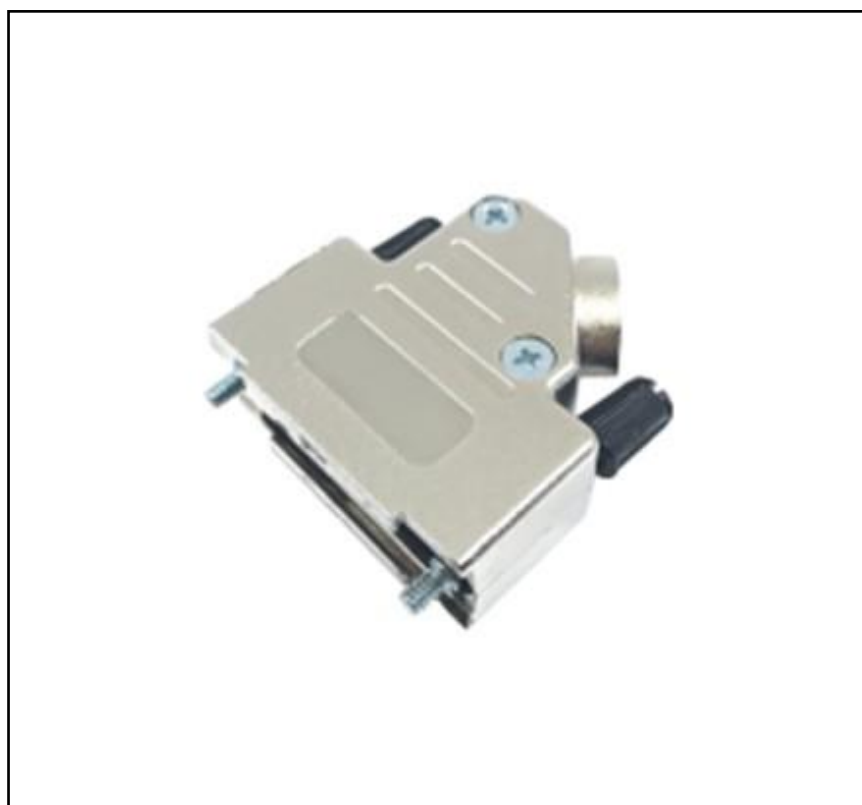


Features

- EMI/RFI Shielded
- Angled entry version
- Die casted zinc
- 15 Way
- Supports cable 3-13 mm

RS PRO D Sub Backshell

RS Stock No.: DVZK15-KIT



RS PRO is the own brand of RS. The RS PRO Seal of Approval is your assurance of professional quality, a guarantee that every part is rigorously tested, inspected, and audited against demanding standards. Making RS PRO the Smart Choice for our customers.

Product Description

- *EMI/RFI Shielded D-Sub backshell kit*
- *Backshell for D-sub connector 15 pin male/female*
- *Die casted Zinc, Nickel plated*
- *Finger screws and strain relief set*

General Specifications

Type	Backshell kit size 15/A
For use with	D-Sub Connector 15 pin
Material	Zinc, Ni-plated
Cable diameter	Supports cable diameter 3-13 mm
Cable outlet orientation	Angled
Cable strain relief	PC UL94 V0, inserts in 4 sizes: 4 - 9 mm
Jackscrews	Steel Ni plated, with black plastic knob
Jackscrew tread	#4-40 UNC
Jackscrew mounting torque	50 Ncm
Assembly screws	Steel Ni plated, self-tapping M3X10 PH
Assembly screws mounting torque	100 - 120 Ncm
Attenuation factor	> 40 dB between 30 MHz and 1 GHz

Operation Environment Specifications

Operating temperature	-40° C to 120° C
-----------------------	------------------

Approvals

Compliance	RoHS and REACH
------------	----------------

