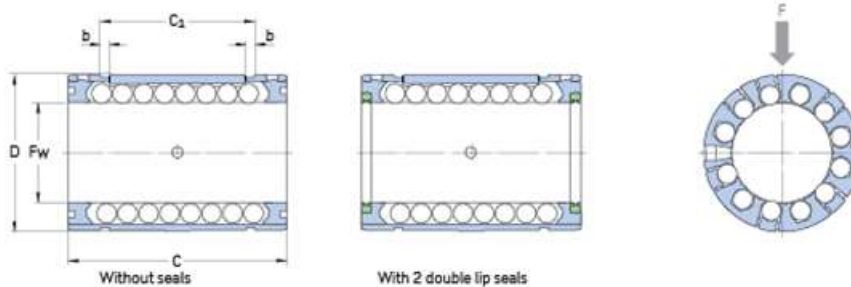
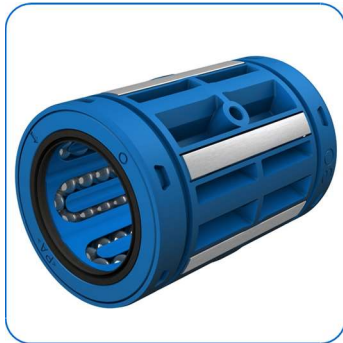


Product data sheet

LBCR 20 D-2LS

Linear ball bearing with 2 seals, closed design



Replacing LBCR 20 A-2LS

Fw:	20
D[mm]:	32
C[mm]:	45
C1[mm]:	31.2
b[mm]:	1.6
Ball rows [#]:	6
Cmin[N]:	2200
Cmax[N]:	3250
C0min[N]:	1630
C0max[N]:	2650
vmax[m/s]:	5

Date: 13/05/2020

The contents of this report are the copyright of the publisher and may not be reproduced (even extracts) unless permission is granted. Every care has been taken to ensure the accuracy of the information contained in this report but no liability can be accepted for any loss or damage whether direct, indirect or consequential arising out of the use of the information contained herein.

Product data sheet

LBCR 20 D-2LS

Linear ball bearing with 2 seals, closed design

amax[m/s ²]:	100
Weight [kg]:	0.056

Date: 13/05/2020

The contents of this report are the copyright of the publisher and may not be reproduced (even extracts) unless permission is granted. Every care has been taken to ensure the accuracy of the information contained in this report but no liability can be accepted for any loss or damage whether direct, indirect or consequential arising out of the use of the information contained herein.