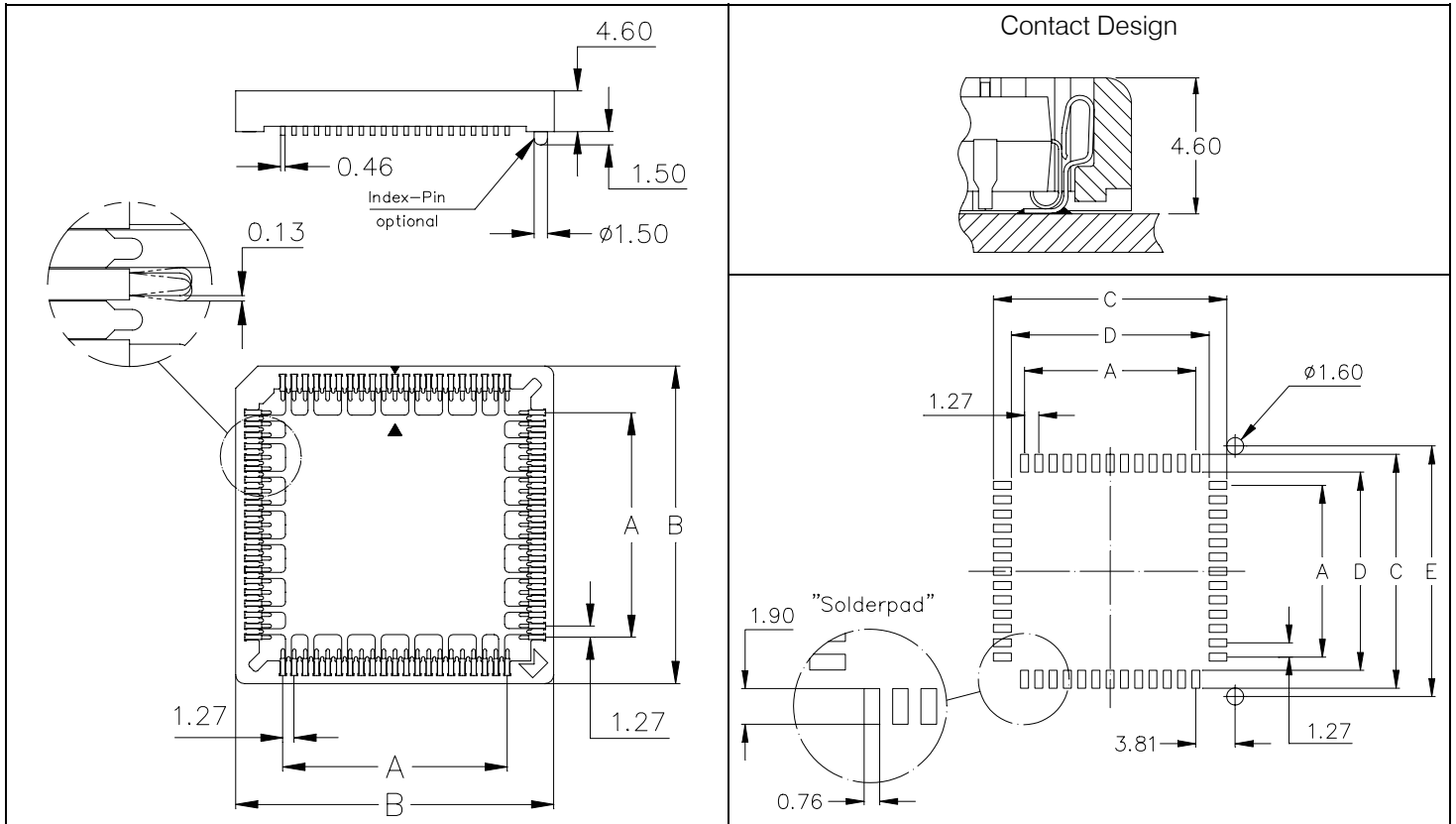
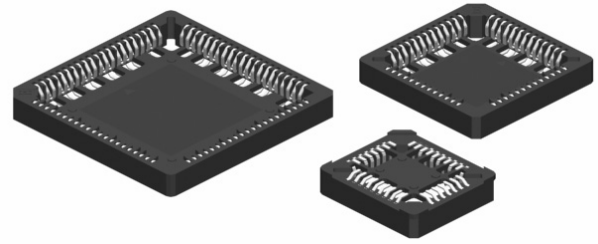




Only 4.60mm height above board.  
 Identical PCB layout for socket and chip.  
 Solder terminals visible for post solder checks.  
 Available with index pins under the insulator for correct orientation of the sockets.  
 Diagonal slots for easy extraction of the chip with the Universal extraction tool PUL-200.  
 Sockets correspond to JEDEC Norms.  
 Also available in tape & reel packaging.



**Specifications**

**Mechanical data**

Contact (RoHS compliant) Phosphor bronze  
 Plating Sn (leadfree) over Ni  
 Insulator (RoHS compliant) High temp plastic black UL 94 V-0  
**Temperature**  
 Operating temp. - 40°C to +105°C  
 Processing temp. +250°C +/-5°C for 20~40sec.

**Electrical data**

Measuring voltage 100 V RMS / 150V DC  
 Breakdown voltage >600 V RMS  
 Contact resistance <20 mΩ  
 Insulation resistance >5000 MΩ  
 Current rating 1 A max., 100V  
 Capacitance <2 pF

PIN	Ordering Code		Dimensions mm				
	PLCC SMT without index pins	PLCC SMT with index pins	"A"	"B"	"C"	"D"	"E"
20	<b>PLS - 020 - H105 - 99</b>	<b>PLS - 020 - H105 - 99/4</b>	5,08	15,58	10,50	6,70	12,70
28	<b>PLS - 028 - H105 - 99</b>	<b>PLS - 028 - H105 - 99/4</b>	7,62	18,12	12,61	8,81	15,24
32	<b>PLS - 032 - H105 - 99</b> (rectangular)	<b>PLS - 032 - H105 - 99/4</b> (rectangular)	7,62 x 10,16	20,66 x 18,12	13,04 x 15,58	9,24 x 11,78	17,78
44	<b>PLS - 044 - H105 - 99</b>	<b>PLS - 044 - H105 - 99/4</b>	12,70	23,20	18,12	14,32	20,32
52	<b>PLS - 052 - H105 - 99</b>	<b>PLS - 052 - H105 - 99/4</b>	15,24	25,74	20,86	17,06	22,86
68	<b>PLS - 068 - H105 - 99</b>	<b>PLS - 068 - H105 - 99/4</b>	20,32	30,82	25,74	21,94	27,94
84	<b>PLS - 084 - H105 - 99</b>	<b>PLS - 084 - H105 - 99/4</b>	25,40	35,90	30,39	26,59	33,02
For tape&reel packing pls. order with - 99/R							
<b>PUL - 200</b>			Universal extraction tool for all sizes				