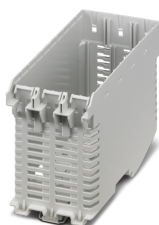


Mounting base housing - ME-IO 56,4 EB 10U TBUS 7035 - 1159013

Please be informed that the data shown in this PDF Document is generated from our Online Catalog. Please find the complete data in the user's documentation. Our General Terms of Use for Downloads are valid (<http://phoenixcontact.com/download>)




DIN rail housing, Lower housing part with metal foot catch, with vents, width: 56.88 mm, height: 120.6 mm, depth: 82.85 mm, color: light gray (7035), cross connection: DIN rail connector (optional), number of positions cross connector: 8

Your advantages

- ✓ Easy, tool-free mounting
- ✓ Optional DIN rail connector for easy module-to-module communication
- ✓ Lock and Release principle for automatic latching and intuitive release of the front connection plug
- ✓ Plastic in accordance with UL94 V0: for more rigorous flammability requirements
- ✓ Versatile use: deeper design for more PCB space
- ✓ Wide design: ideal for integrating TFT displays for controllers
- ✓ Greater flexibility: combination with ICS series electronics housing using DIN rail connectors



Key Commercial Data

Packing unit	10 pc
Minimum order quantity	10 pc
GTIN	 4 063151 166519
GTIN	4063151166519
Weight per Piece (excluding packing)	65.500 g
Sales Key	ACHEBA

Technical data

Item properties

Brief article description	Mounting base housing
Type	ME-IO 56,4 EB 10U TBUS 7035
Item no.	1159013
Housing type	DIN rail housing
Housing series	ME-IO
Type	Lower housing part with metal foot catch

Mounting base housing - ME-IO 56,4 EB 10U TBUS 7035 - 1159013

Technical data

Item properties

Max. IP code to attain	IP20
Mounting type	DIN rail mounting
Ventilation openings present	yes

Dimensions

Caption	Schematic figure for illustrating the item dimensions. The figure is not of the desired product. For further details, refer to the product drawings in the "Downloads" tab.
Width [w]	56.88 mm
Height [h]	120.6 mm
Depth [d]	82.85 mm
Depth from top edge of DIN rail [d]	76.25 mm

Material data

Housing material	Polyamide
Surface characteristics	untreated
Color (RAL)	light gray (7035)
Flammability rating according to UL 94	V0

Ambient conditions

Ambient temperature (storage/transport)	-40 °C ... 55 °C
Ambient temperature (assembly)	-5 °C ... 100 °C
Ambient temperature (operation)	-40 °C ... 105 °C (depending on power dissipation)
Relative humidity (storage/transport)	80 %

PCB data

Number of PCB holders	3
PCB thickness	1.4 mm ... 1.8 mm
Mounting position	Vertical (horizontal DIN rail)
PCB surface, maximum	25500 mm²
Type of PCB mount	Latching

Power dissipation, single housing at 20 °C

Ambient temperature	20 °C
Reduction factor	1
Mounting position	vertical
Power dissipation	28.8 W

Power dissipation, single housing at 30 °C

Ambient temperature	30 °C
Reduction factor	0.85
Mounting position	vertical
Power dissipation	24.6 W

Power dissipation, single housing at 40 °C

Mounting base housing - ME-IO 56,4 EB 10U TBUS 7035 - 1159013

Technical data

Power dissipation, single housing at 40 °C

Ambient temperature	40 °C
Reduction factor	0.67
Mounting position	vertical
Power dissipation	19.4 W

Power dissipation, single housing at 50 °C

Ambient temperature	50 °C
Reduction factor	0.48
Mounting position	vertical
Power dissipation	14 W

Power dissipation, single housing at 60 °C

Ambient temperature	60 °C
Reduction factor	0.3
Mounting position	vertical
Power dissipation	8.9 W

Mechanical strength/tumbling barrel

Specification	IEC 60068-2-31:2008-05
Height of fall	50 cm
Number of drop cycles	50

Vibration test

Specification	IEC 60068-2-6:2007-12
Frequency	10 - 150 - 10 Hz
Sweep speed	1 octave/min
Amplitude	0.15 mm (10 - 58.1 Hz)
Acceleration	2g (58.1 - 150 Hz)
Test duration per axis	2.5 h
Test directions	X-, Y- and Z-axis

Shock

Specification	IEC 60068-2-27:2008-02
Pulse shape	Semi-sinusoidal
Acceleration	15g
Shock duration	11 ms
Number of shocks per direction	3
Test directions	X-, Y- and Z-axis (pos. and neg.)

Thermostability (Ball Thrust Test)

Specification	IEC 60695-10-2:2014-02
Temperature	125 °C
Test duration	1 h
Force	20 N

Mounting base housing - ME-IO 56,4 EB 10U TBUS 7035 - 1159013

Technical data

Test for assessing the risk of fire (glow wire)

Specification	IEC 60695-2-11:2014-02
Temperature	850 °C
Time of exposure	30 s

Testing for paint wetting impairment substances (LABS-conformity)

Specification	VDMA 24364:2018-05
Testing	Labeling of LABS-conformity

Degrees of protection provided by housings (IP code)

Specification	IEC 60529:1989-11 + AMD 1:1999-11 + AMD 2:2013-08
Result, degree of protection, IP code	IP20

Resistance to aging and moisture

Specification	IEC 60068-2-61:1991-06
Dry heat	16 h/100°C
Damp heat	1 cycle (55°C/95%); 2 h/-40°C; 5 cycles (55°C/95%)

General information

Type of note	Assembly instruction:
Note	Refer to the data sheet for the range in the download area.
Type of note	Recommendation
Note	Material of contact pads for bus connector, galvanic gold (hard gold)

Packaging information

Type of packaging	packed in cardboard
Pieces per package	10
Denomination packing units	Pcs.
Outer packaging type	Carton

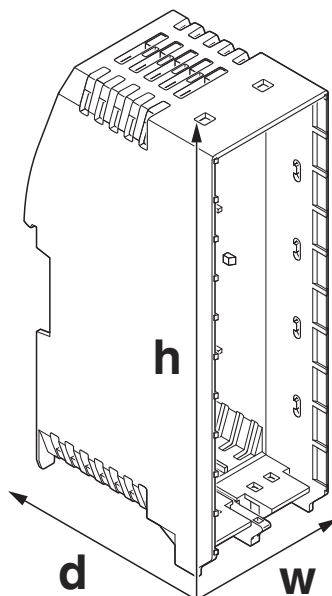
Standards and regulations

Flammability rating according to UL 94	V0
----------------------------------------	----

Drawings

Mounting base housing - ME-IO 56,4 EB 10U TBUS 7035 - 1159013

Dimensional drawing



Schematic figure for illustrating the item dimensions. The figure is not of the desired product. For further details, refer to the product drawings in the "Downloads" tab.

Classifications

eCl@ss

eCl@ss 10.0.1	27182702
eCl@ss 11.0	27182702
eCl@ss 5.0	27371300
eCl@ss 5.1	27371300
eCl@ss 6.0	27180800
eCl@ss 7.0	27182702
eCl@ss 9.0	27182702

ETIM

ETIM 6.0	EC001031
ETIM 7.0	EC001031

UNSPSC

UNSPSC 13.2	31261501
UNSPSC 18.0	31261501
UNSPSC 19.0	31261501
UNSPSC 20.0	31261501
UNSPSC 21.0	31261501

Mounting base housing - ME-IO 56,4 EB 10U TBUS 7035 - 1159013

Approvals

Approvals

Approvals

UL Recognized

Ex Approvals

Approval details

UL Recognized



<http://database.ul.com/cgi-bin/XYV/template/LISEXT/1FRAME/index.htm>

FILE E 240868

Accessories

Additional products

Upper housing part with touch display - ME-IO 56,4 C 10U D2,4-TRG 7035 - 1209364



DIN rail housing, 10U upper part, integrated 2.4" resistive touch display, Resolution: 320 x 240 Pixel(s), interface: 4-wire SPI half duplex, Housing cover, width: 56.88 mm, height: 109.8 mm, depth: 26 mm, color: light gray (7035)

Upper housing part with touch display - ME-IO 56,4 C 10U D2,4-TRG 7035-VPE1 - 1225275



DIN rail housing, 10U upper part, integrated 2.4" resistive touch display, interface: 4-wire SPI half duplex, Housing cover, width: 56.88 mm, height: 109.8 mm, depth: 26 mm, color: light gray (7035)