

WHEEL A 100X40/40 INOX RB SWIV X40L/50 + BRAKE

Wheel series A

Wheels with cast polyurethane coating 95 Sh.A on polyamide 6 center.
Wheel fitted with stainless steel roller bearing.

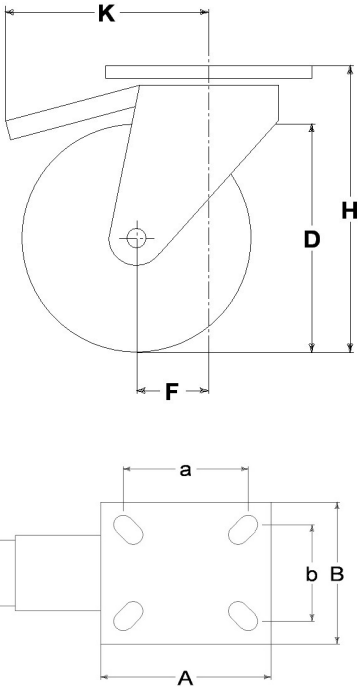
Castor series INOX40

Inox 40 series, polished stainless steel forks, swivels assemblies with double races & 'water resistant' protections. Finish: polished.
Trailing foot brake - total stop.



Technical data

| | | |
|----------------------------|-----|-----------|
| Wheel diameter | D | 100 mm |
| Tyre width | E | 40,0 mm |
| Bore diameter | d | 15 mm |
| Weight article | | 1,550 kg |
| Hub width | L | 40 mm |
| Overall height | H | 137 mm |
| Top plate outer dimensions | AxB | 105x85 mm |
| Bolt hole spacing | axb | 76x55 mm |
| Bolt hole spacing | axb | 80x60 mm |
| Fixing bolt diameter | g | M8 |
| Offset | F | 42 mm |
| Fork width | U | 50 mm |
| Load Capacity | | 250 kg |



Related Articles

Spare part wheel: [4561/X](#)
Basic version: [20628](#)

GENERAL INFORMATION / RECOMMENDATIONS AND WARNINGS

The cited text and the complete catalogue in their most up-dated versions are available in the OEM's website page www.lagspa.it/downloads. The dimensions, descriptions, specifications and illustrations herein are indicative and subject to variations without notice. The fact that products are illustrated herein does not necessarily imply they are available from stock nor does it place us under any obligation to supply them. Tests carried out refer to the original products with original accessories: the replacement of one of the components with others of different manufacture might prevent the same results from being achieved and will automatically invalidate any guarantee. Please contact our technical service concerning any special application.