



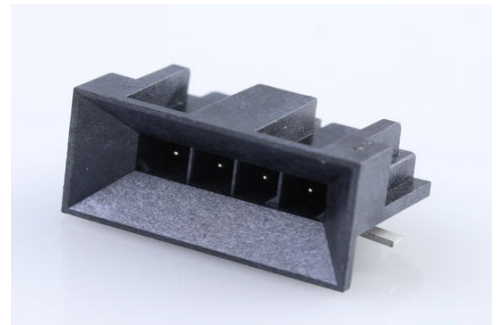
Part Number : [466220402](#)

Product Description : Micro-Fit BMI Header, Surface Mount, Single Row, Right-Angle, with Solder Tab, 0.76µm Gold (Au) Selective Plating, 4 Circuits, Tape and Reel

Series Number : 46622

Status : Active

Product Category : PCB Headers and Receptacles



Documents & Resources

Drawings

[466220402 sd.pdf](#)

[PK-46622-001-001.pdf](#)

3D Models and Design Files

[STEP AP242](#)

[SOLIDWORKS](#)

[Creo](#)

[Symbol and Footprint \(Multi-Format\)](#)


[SYM-46622-0400-001.zip](#)

Specifications

[PS-44300-001-001.pdf](#)

Product Environment Compliance

Compliance

GADSL/IMDS	Compliant with Exemption 44; 34; 33
China RoHS	 per SJ/T 11365-2006
EU ELV	Not Relevant
Low-Halogen Status	Low-Halogen per IEC 61249-2-21
REACH SVHC	Not Contained per D(2024)7663-DC (21 Jan 2025)
EU RoHS	Compliant per EU 2015/863

Compliance Statements

- EU RoHS
- REACH SVHC
- Low-Halogen

Industry Documents

- IPC 1752A Class C
- IPC 1752A Class D
- Molex Product Compliance Declaration
- IEC-62474
- chemSHERPA (xml)

Substances of Interest

- PFAS

EU RoHS Certificate of Compliance

Additional Product Compliance Information

Part Details

General

Status	Active
Category	PCB Headers and Receptacles
Series	46622
Description	Micro-Fit BMI Header, Surface Mount, Single Row, Right-Angle, with Solder Tab, 0.76µm Gold (Au) Selective Plating, 4 Circuits, Tape and Reel
Application	Power, Wire-to-Board
Component Type	PCB Header
Product Name	Micro-Fit BMI
UPC	191128232975

Agency

CSA	LR19980
-----	---------

Electrical

Current - Maximum per Contact	8.5A
Voltage - Maximum	600V

Physical

Breakaway	No
Circuits (Loaded)	4
Circuits (maximum)	4
Color - Resin	Black
Durability (mating cycles max)	30
First Mate / Last Break	No
Flammability	94V-0
Glow-Wire Capable	No
Guide to Mating Part	No
Keying to Mating Part	None
Lock to Mating Part	Yes
Material - Metal	Brass
Material - Plating Mating	Gold
Material - Plating Termination	Tin
Material - Resin	Liquid Crystal Polymer
Net Weight	1.294/g
Number of Rows	1
Orientation	Right Angle
Packaging Type	Embossed Tape on Reel
PCB Locator	Yes
PCB Retention	Yes
Pitch - Mating Interface	3.00mm
Plating min - Mating	0.762µm
Plating min - Termination	2.540µm
Polarized to Mating Part	Yes
Polarized to PCB	Yes
Shrouded	Fully
Stackable	No
Temperature Range - Operating	-40° to +105°C
Termination Interface Style	Surface Mount

Solder Process Data

Max-Duration	30
Lead-Free Process Capability	REFLOW
Max-Cycle	3

Max-Temp	260
----------	-----

Mates With / Use With

Mates with Part(s)

Description	Part Number
Micro-Fit BMI Single Row Receptacle Housings	<u>46623</u>

This document was generated on Aug 11, 2025